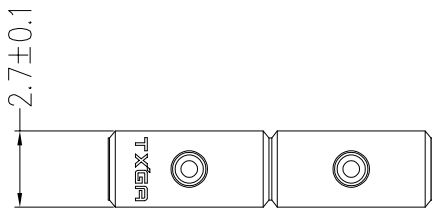


1 2 3 4 5 6 7 8

REV	LOCATIONS	DESCRIPTION	DATE	REVISER	APPD

A



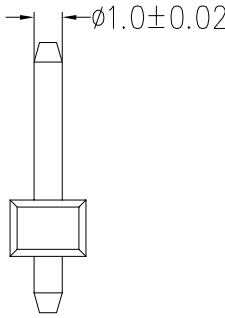
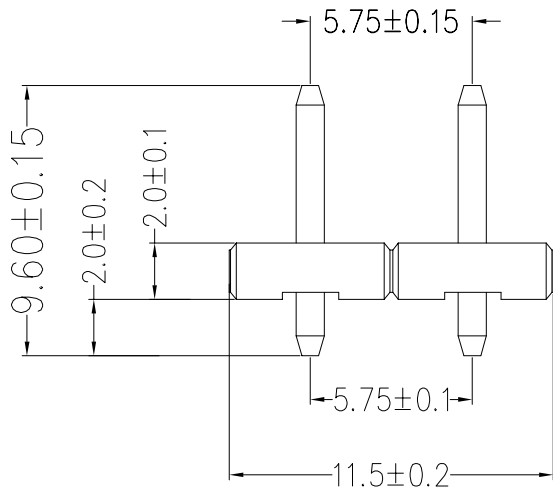
2.7±0.1

B

**SPECIFICATIONS**  
**Material and Plating**  
 Housing: PA6T, 94V-0, ROHS2.0  
 Contact Pin, Brass, Tin Plated

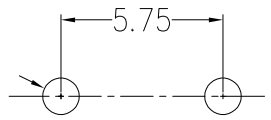
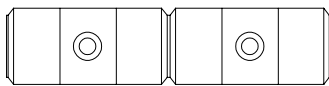
**Electrical**  
 Current Rating : 10A AC(rms)/DC  
 Voltage Rating : 300V AC(rms)/DC  
 Contact Resistance: 30mΩ Max.  
 Dielectric Withstanding Voltage: 1.6KV AC r.m.s  
 Temperature Range-Operating: -40°C~+105°C

C



D

E



Recommended P.C.Board Layout  
 General Tolerances ±0.05

F

 THIRD ANGLE PROJECTION	GENERAL TOLERANCES (UNLESS SPECIFIED)		APPROVE BY	DATE	PART NO.	ITEM NO.	 Building Technology Cornerstone	
	X. ±0.30	X.* ±5*	LEO	30/JUN/23	FPH57501-S02BK004-00	FPH57501		
	DESIGN UNITS	X.X ±0.20	X.X* ±2*	CHECKED BY	DATE	TITLE		THIS DRAWING CONTAINS INFORMATION THAT IS PROPRIETARY TO TXGA INDUSTRIAL ELECTRONICS(S.Z)CO.,LTD AND SHOULD NOT BE USED WITHOUT WRITTEN PERMISSION
	METRIC	X.XX ±0.15	X.XX* ±1*	GISELLE	30/JUN/23	Pin Header		
SCALE	SIZE	X.XXX ±0.10	X.XXX* ±0.5*	DRAWN BY	DATE	REV 0	SHEET NO. 1/1	
5:1	A4			CHERRY	30/JUN/23			

1 2 3 4 5 6 7 8