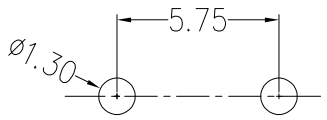
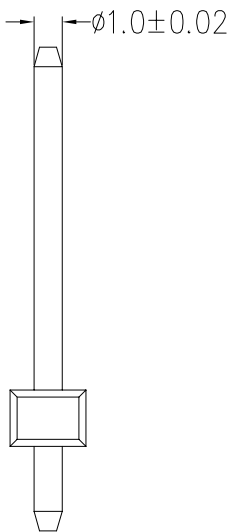
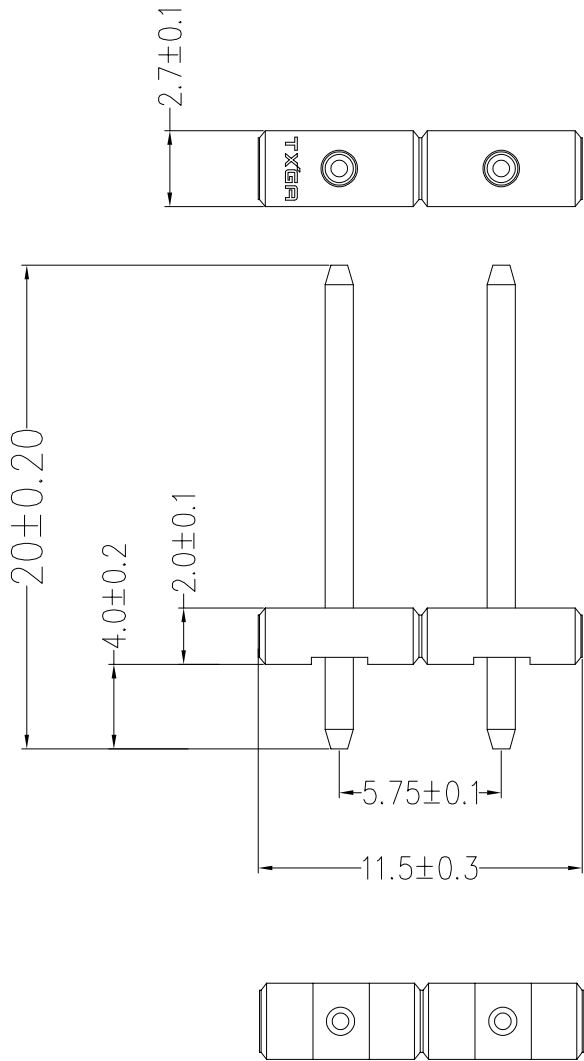


1 2 3 4 5 6 7 8

REV	LOCATIONS	DESCRIPTION	DATE	REVISER	APPD

**SPECIFICATIONS**  
**Material and Plating**  
 Housing: PA6T, 94V-0, ROHS2.0  
 Contact Pin, Brass, Tin Plated

**Electrical**  
 Current Rating : 10A AC(rms)/DC  
 Voltage Rating : 300V AC(rms)/DC  
 Contact Resistance: 30mΩ Max.  
 Dielectric Withstanding Voltage: 1.6KV AC r.m.s  
 Temperature Range-Operating: -40°C~+105°C



Recommended P.C. Board Layout  
 General Tolerances  $\pm 0.05$

A  
B  
C  
D  
E  
F

A  
B  
C  
D  
E  
F

 THIRD ANGLE PROJECTION	GENERAL TOLERANCES (UNLESS SPECIFIED)		APPROVE BY	DATE	PART NO.	ITEM NO.	 Building Technology Cornerstone
	X. $\pm 0.30$	X.* $\pm 5^*$	LEO	19/May/25	FPH57501-S02BK009-00	FPH57501	
	DESIGN UNITS METRIC		CHECKED BY	DATE	TITLE		REV 0      SHEET NO. 1/1
	X.X $\pm 0.20$	X.X* $\pm 2^*$	GISELLE	19/May/25	Pin Header		
SCALE	SIZE	X.XX $\pm 0.15$	X.XX* $\pm 1^*$	DRAWN BY	DATE	THIS DRAWING CONTAINS INFORMATION THAT IS PROPRIETARY TO TXGA INDUSTRIAL ELECTRONICS(S.Z)CO.,LTD AND SHOULD NOT BE USED WITHOUT WRITTEN PERMISSION	
5:1	A4	X.XXX $\pm 0.10$	X.XXX* $\pm 0.5^*$	CHERRY	19/May/25		

1 2 3 4 5 6 7 8