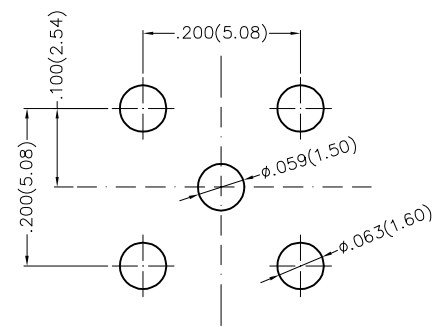
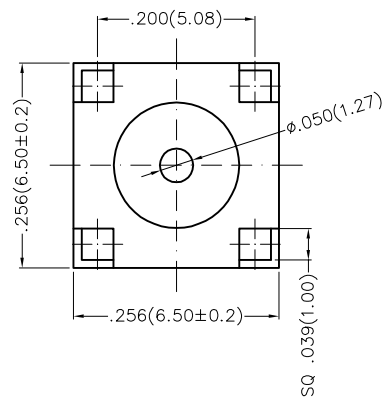
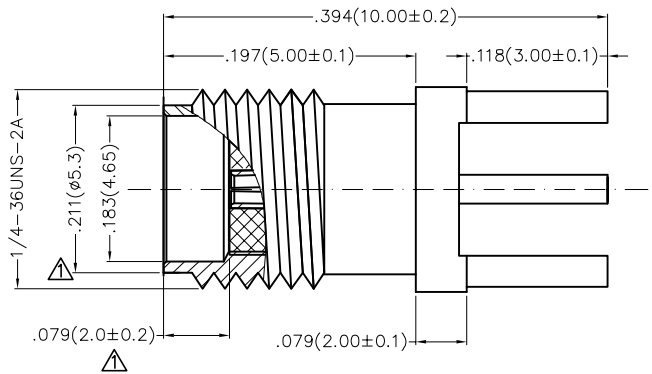


REV	LOCATIONS	DESCRIPTION	DATE	REVISER	APPD
1	△	Tolerances and dimensions changes	24/MAY/17	KATE	FRANK

NOTES
 Electrical
 Impedance: 50Ω
 VSWR: 1.25 Max
 Working Voltage: 170V r.m.s at Sea Level
 Withstanding Voltage: 500V r.m.s at Sea Level
 Insulation Resistance: 1000 MΩ Min
 Frequency range: 0~6 GHz
 Center contact resistance: 4mΩ
 Outer contact resistance: 2.5mΩ
 Mechanical
 Durability: 500 cycles Min.
 Temperature Range—Operating: -65°C~+165°C
 Material
 Insulator: PTFE (UL 94V-0), White
 Center Contact: Brass
 Body: Copper Alloy
 Finish:
 Center Contact: 3μ" gold plated over nickel
 Body: 1μ" gold plated over nickel



Recommended P.C.Board Layout
 General Tolerances: ±0.05mm

 THIRD ANGLE PROJECTION	GENERAL TOLERANCES (UNLESS SPECIFIED)		APPROVE BY	DATE	PART NO.	ITEM NO.	 Leader Of Industry
	X.±.012(0.30)	X.±5'	FRANK	12/JUL/16	FRF01012-JDS103B	FRF01012	
DESIGN UNITS	X.X±.008(0.20)	.X'±2"	CHECKED BY	DATE	TITLE		THIS DRAWING CONTAINS INFORMATION THAT IS PROPRIETARY TO TXGA INDUSTRIAL ELECTRONICS(S.Z)CO.,LTD AND SHOULD NOT BE USED WITHOUT WRITTEN PERMISSION
Inch (metric)	X.XX±.006(0.15)	.XX'±1"	CHERRY	12/JUL/16	SMA RF JACK		
SCALE	X.XXX±.004(0.10)	.XXX'±0.5'	DRAWN BY	DATE	REV 1	SHEET NO. 1/1	
5:1			KATE	12/JUL/16			