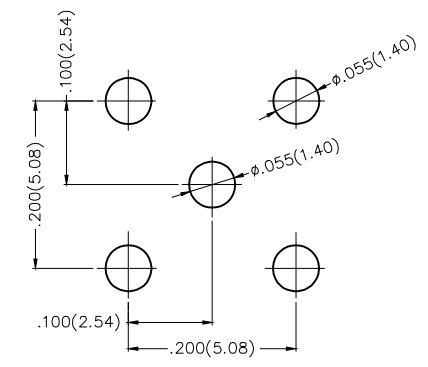
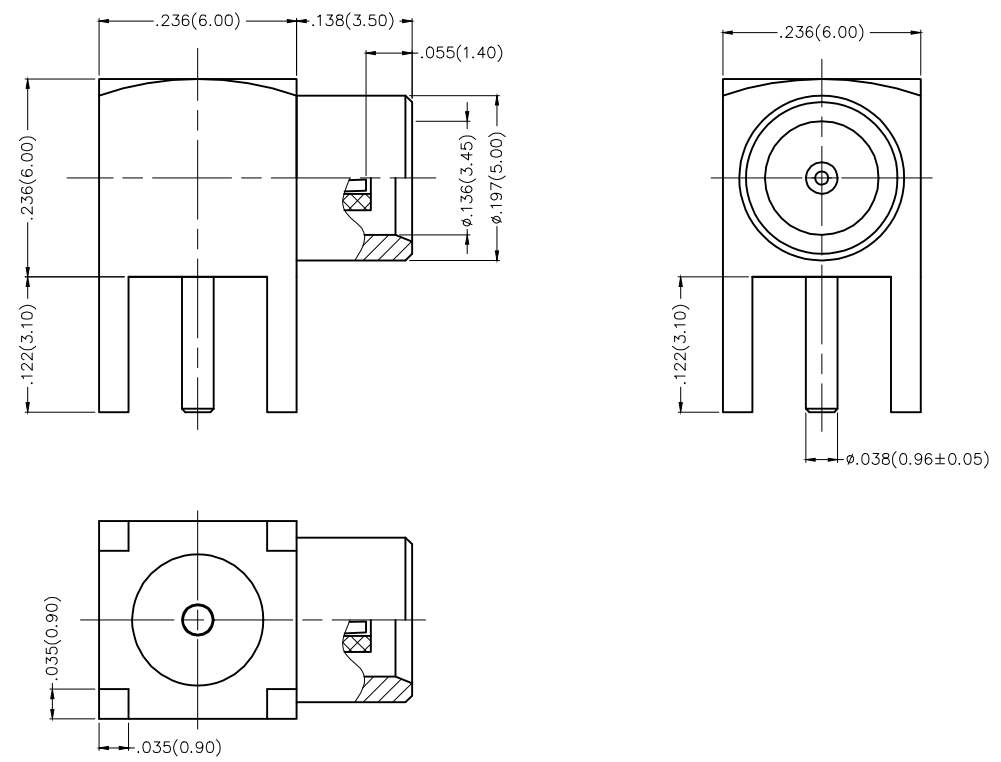


REV	LOCATIONS	DESCRIPTION	DATE	REVISOR	APPD

SPECIFICATION

Electrical
 Impedance: 50Ω
 Working Voltage: 500V AC
 Insulation Resistance: 1,000MΩ Min.
 Withstand Voltage: 750V, 50Hz rms.
 Temperature Range—Operating: -55°C~+155°C
 Relative Humidity: 95% Max. (40°C±2°C)

Material And Plating
 Insulator: PTFE (UL 94V-0), White
 Body: Brass/ Gold Flash
 Center Pin: Brass/ Gold Plated



Recommended P.C. Board Layout
 General Tolerances: ±0.05mm

 THIRD ANGLE PROJECTION	GENERAL TOLERANCES (UNLESS SPECIFIED)		APPROVE BY	DATE	PART NO.	ITEM NO.	 Leader Of Industry
	X.±.012(0.30)	X'.±5'	FRANK	14/JUL/16	FRF03001-JDB103B	FRF03001	
DESIGN UNITS Inch (metric)	X.X±.008(0.20)	.X'±2'	CHECKED BY	DATE	TITLE		REV 0
SCALE	X.XX±.006(0.15)	.XX'±1"	CHERRY	14/JUL/16	MCX RF JACK		
5:1	X.XXX±.004(0.10)	.XXX'±0.5'	DRAWN BY	DATE	THIS DRAWING CONTAINS INFORMATION THAT IS PROPRIETARY TO TXGA INDUSTRIAL ELECTRONICS(S.Z)CO.,LTD AND SHOULD NOT BE USED WITHOUT WRITTEN PERMISSION		
SIZE A4			KATE	14/JUL/16			