

REV	LOCATIONS	DESCRIPTION	DATE	REVISER	APPD
1	△	Part No.: Change FRJ1102 into FRJ11002	05/JUN/18	KATE	ERIC
2	△	Update structure and dimensions	23/OCT/23	MATT	LEO

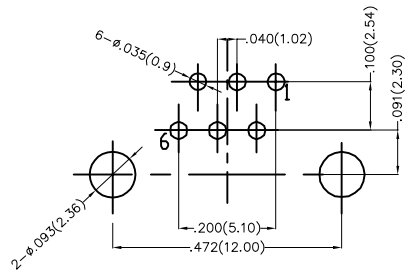
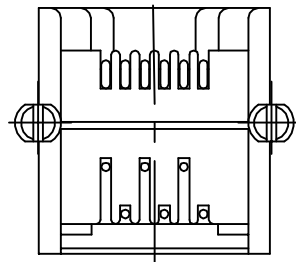
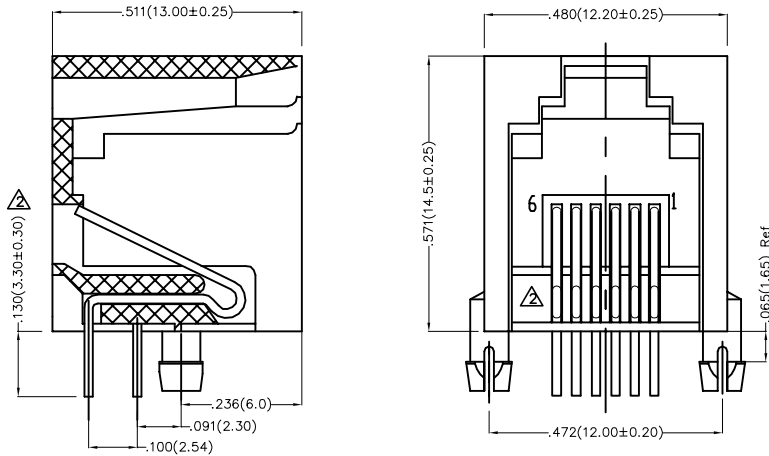
### SPECIFICATIONS

#### Electrical

Current Rating: 1.5A AC(rms)/DC  
Voltage Rating: 125V AC(rms)/DC  
Contact Resistance: 30 mΩ Max  
Insulation Resistance: 500 MΩ MIN  
Withstanding Voltage: 1000V AC r.m.s  
Temperature Range—Operating: -40°C~+85°C

#### Material and Plating

Housing: PBT UL 94V-0  
Contact: Phosphor Bronze  $\phi 0.46\text{mm}$   
Plating: Gold Plated Over Nickel



Recommended P.C.Board Layout

### Ordering Information

FRJ11 002 — 1 1 XX G1 K 2 0  
1 2 3 4 5 6 7 8

1 Category FRJ11—RJ11 Connector	2 Distinction No. 002	3 Ports options 1—1 Port	4 Plating 1—Gold Plated
5 Thickness of plating 00—Gold flash 03—3μ" Custom plate available	6 Color—Resin G1—Gray	7 Packaging K—Tray	8 Contact type 2—Round pin

 THIRD ANGLE PROJECTION	GENERAL TOLERANCES (UNLESS SPECIFIED)		APPROVE BY FRANK	DATE 1/AUG/13	PART NO. △ FRJ11002-11XXG1K20	ITEM NO. FRJ11002	 Building Technology Cornerstone
	X.±.012(0.30)	X:±5°	CHECKED BY CHERRY	DATE 1/AUG/13	TITLE RJ11 Connector 6P6C 90° Angle		
DESIGN UNITS Inch (metric)	X.X±.008(0.20)	.X'±2'	DRAWN BY JACOB	DATE 1/AUG/13	THIS DRAWING CONTAINS INFORMATION THAT IS PROPRIETARY TO TXGA INDUSTRIAL ELECTRONICS(S.Z)CO.,LTD AND SHOULD NOT BE USED WITHOUT WRITTEN PERMISSION		REV 2
SCALE 5:1	SIZE A4	X.XX±.006(0.15)					SHEET NO. 1/1
		X.XXX±.004(0.10)					