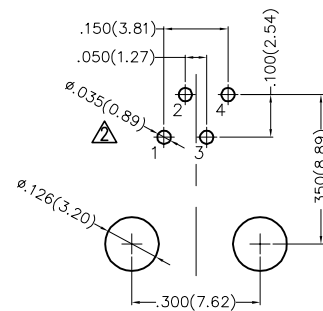
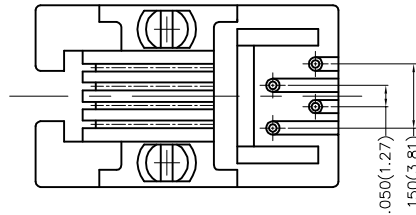
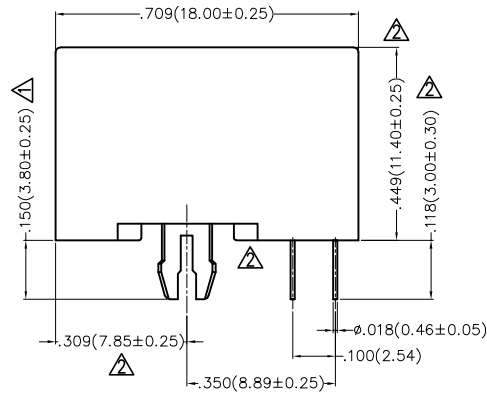
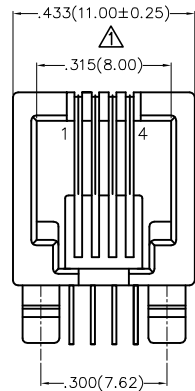


REV	LOCATIONS	DESCRIPTION	DATE	REVISER	APPD
1		1. Dimension: Change 3.46 into 3.80mm Change 11.18 into 11.00mm 2. Part No.: Change FRJ1119 into FRJ11005	25/MAY/18	Vandy	Eric
2		Change structure and size	15/MAR/21	KATE	CHERRY



Recommended P.C.Board Layout

SPECIFICATIONS

Electrical Performances

Current Rating: 1.5A AC(rms)/DC
Voltage Rating: 125V AC(rms)/DC
Contact Resistance: 30 mΩ Max
Insulation Resistance: 500 MΩ Min
Withstanding Voltage: 1000V AC r.m.s
Temperature Range-Operating: -40°C~+85°C
Durability: 750 Cycles Min.

Material and Plating

Housing: PBT (UL 94V-0) Black
Contact: Phosphor Bronze/ Gold plated

Ordering Information

FRJ11 005 - 1 1 XX K6 K 2 0
1 2 3 4 5 6 7 8

1	Category FRJ11-RJ11 Connector	2	Distinction No. 005	3	Ports options 1-1 Port	4	Plating 1-Gold Plated
5	Thickness of plating 00-Gold flash 03-3μ" Custom plate available	6	Color-Resin K6-Black	7	Packaging K-Tray	8	Contact type 2-Round pin

	GENERAL TOLERANCES (UNLESS SPECIFIED)		APPROVE BY FRANK	DATE 18/SEP/16	PART NO. FRJ11005-11XXK6K20	ITEM NO. FRJ11005	 Leader Of Industry	
	DESIGN UNITS Inch (metric)	X.±.012(0.30) X.X±.008(0.20) X.XX±.006(0.15) X.XXX±.004(0.10)	X.±5° .X'±2° .XX'±1° .XXX'±0.5°	CHECKED BY CHERRY	DATE 18/SEP/16	TITLE RJ11 Connector 4P4C 90° Angle		REV 2
SCALE 5:1	SIZE A4		DRAWN BY KATE	DATE 18/SEP/16	THIS DRAWING CONTAINS INFORMATION THAT IS PROPRIETARY TO TXGA INDUSTRIAL ELECTRONICS(S.Z)CO.,LTD AND SHOULD NOT BE USED WITHOUT WRITTEN PERMISSION			