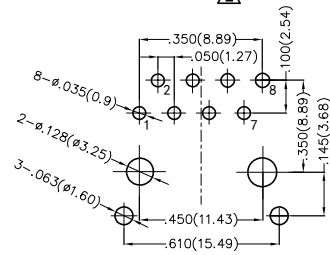
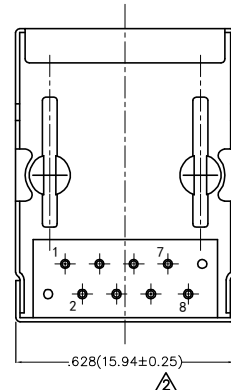
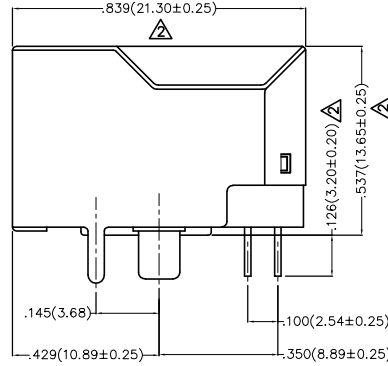
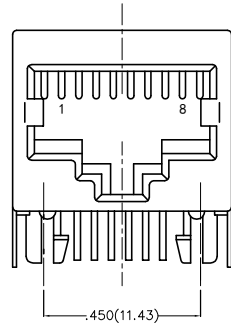


REV	LOCATIONS	DESCRIPTION	DATE	REVISER	APPD
1	△	1. Add the "TXGA" logo 2. Part No.: Change FRJ4507 into FRJ45007	01/JUN/18	Vandy	Eric
2	△	Size change	14/MAY/20	KATE	CHERRY



Recommended P.C.Board Layout

**SPECIFICATIONS**

**Electrical Performances**

Current Rating: 1.5A AC(rms)/DC  
Voltage Rating: 125V AC(rms)/DC  
Contact Resistance: 30 mΩ Max  
Insulation Resistance: 500 MΩ MIN  
Withstanding Voltage: 1000V AC r.m.s

**Material and Plating**

Housing: PBT (UL 94V-0)  
Contact: Phosphor Bronze/ Gold Plated  
Shell: Copper Alloy/ Nickel Plated

**Mechanical Performances**

Mating/Unmating Force: 30N Max  
Retention Strength: 50N For 60s±5s  
Durability: 750 Cycles Min.

**Environmental Characteristics**

Temperature Range-Operating: -40°C~+85°C

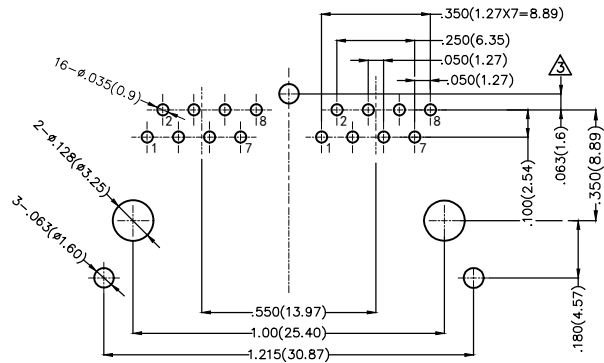
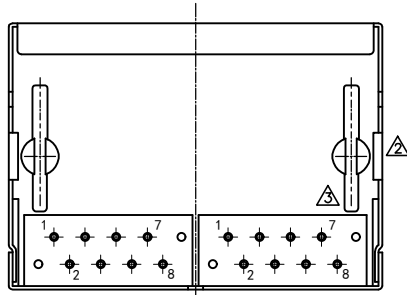
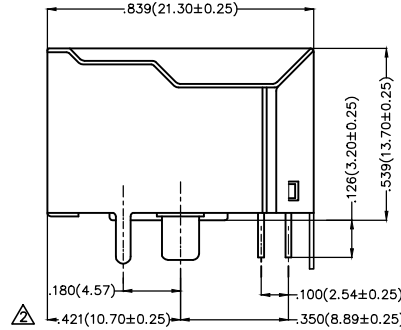
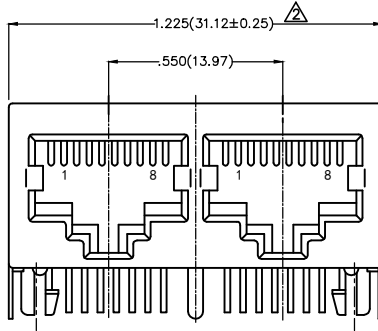
**Ordering Information**

FRJ45 007 - 1 1 XX K6 K 0 2 B 0  
1 2 3 4 5 6 7 8 9

1   Category FRJ45-RJ45 Connector	2   Distinction No. 007	3   Ports options 1-1 Port	4   Plating 1-Gold Plated
5   Thickness of plating 00-Gold flash 03-3μ" Custom plate available	6   Color-Resin K6-Black	7   Packaging K-Tray	8   Contact type 2-Round pin
			9   distinction type B-B type

 THIRD ANGLE PROJECTION	GENERAL TOLERANCES (UNLESS SPECIFIED)		APPROVE BY FRANK	DATE 1/AUG/13	PART NO. △ FRJ45007-11XXK6K02B0	ITEM NO. FRJ45007	 Building Technology Cornerstone
	DESIGN UNITS Inch (metric)	X.±.012(0.30) X:±5' X.X±.008(0.20) .X'±2'	CHECKED BY CHERRY	DATE 1/AUG/13	TITLE RJ45 Connector 8P8C 90° Angle	REV 2 SHEET NO. 1/1	
SCALE 5:1	SIZE A4	X.XX±.006(0.15) .XX'±1' X.XXX±.004(0.10) .XXX'±0.5'	DRAWN BY JACOB	DATE 1/AUG/13	THIS DRAWING CONTAINS INFORMATION THAT IS PROPRIETARY TO TXGA INDUSTRIAL ELECTRONICS(S.Z)CO.,LTD AND SHOULD NOT BE USED WITHOUT WRITTEN PERMISSION		

REV	LOCATIONS	DESCRIPTION	DATE	REVISER	APPD
1	△	Part No.: Change FRJ4507 into FRJ45007	01/JUN/18	Vandy	Eric
2	△	structure and size change	12/APR/22	MATT	CHERRY
3	△	Update structure and dimensions	18/JAN/24	MATT	LEO



Recommended P.C.Board Layout

SPECIFICATIONS

Electrical Performances

Current Rating: 1.5A AC(rms)/DC  
Voltage Rating: 125V AC(rms)/DC  
Contact Resistance: 30 mΩ Max  
Insulation Resistance: 500 MΩ MIN  
Withstanding Voltage: 1000V AC r.m.s

Material and Plating

Housing: PBT (UL 94V-0)  
Contact: Phosphor Bronze/ Gold Plated  
Shell: Copper Alloy/ Nickel Plated

Mechanical Performances

Mating/Unmating Force: 30N Max  
Retention Strength: 50N For 60s±5s  
Durability: 750 Cycles Min.

Environmental Characteristics

Temperature Range-Operating: -40°C~+85°C

Ordering Information

FRJ45 007 - 2 1 XX K6 K 0 2 A 0  
1 2 3 4 5 6 7 8 9

1	Category FRJ45-RJ45 Connector	2	Distinction No. 007	3	Ports options 2-2 Port	4	Plating 1-Gold Plated		
5	Thickness of plating 00-Gold flash 03-3μ" Custom plate available	6	Color-Resin K6-Black	7	Packaging K-Tray	8	Contact type 2-Round pin	9	distinction type A-A type

THIRD ANGLE PROJECTION	GENERAL TOLERANCES (UNLESS SPECIFIED)		APPROVE BY FRANK	DATE 15/JUN/16	PART NO. △ FRJ45007-21XXK6K02A0	ITEM NO. FRJ45007	 Building Technology Cornerstone
	DESIGN UNITS Inch (metric)	X.±.012(0.30) X.X±.008(0.20) X.XX±.006(0.15) X.XXX±.004(0.10)	X'.±5' .X'±2' .XX'±1' .XXX'±0.5'	CHECKED BY JACOB	DATE 15/JUN/16	TITLE RJ45 Connector 8P8C 90° Angle	
SCALE 5:1	SIZE A4	DRAWN BY CHERRY		DATE 15/JUN/16	THIS DRAWING CONTAINS INFORMATION THAT IS PROPRIETARY TO TXGA INDUSTRIAL ELECTRONICS(S.Z)CO.,LTD AND SHOULD NOT BE USED WITHOUT WRITTEN PERMISSION		