

REV	LOCATIONS	DESCRIPTION	DATE	REVISER	APPD
1	△	1. Dimension: Change 3.2 into 3.00±0.20mm 2. Part No.: Change FRJ4510 into FRJ45010	01/JUN/18	Vandy	Eric
2	△	Size changes	22/JAN/21	KATE	CHERRY

**SPECIFICATIONS**

**Electrical Performances**

Current Rating: 1.5A AC(rms)/DC  
Voltage Rating: 125V AC(rms)/DC  
Contact Resistance: 30 mΩ Max  
Insulation Resistance: 500 MΩ MIN  
Withstanding Voltage: 1000V AC r.m.s  
Temperature Range—Operating: -40°C~+85°C

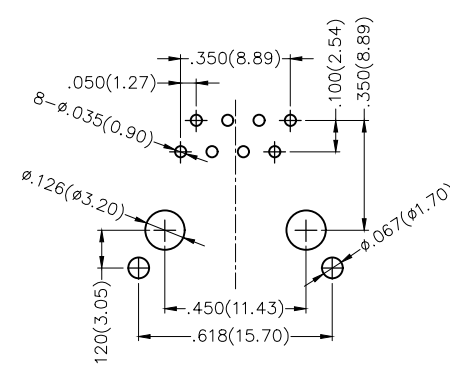
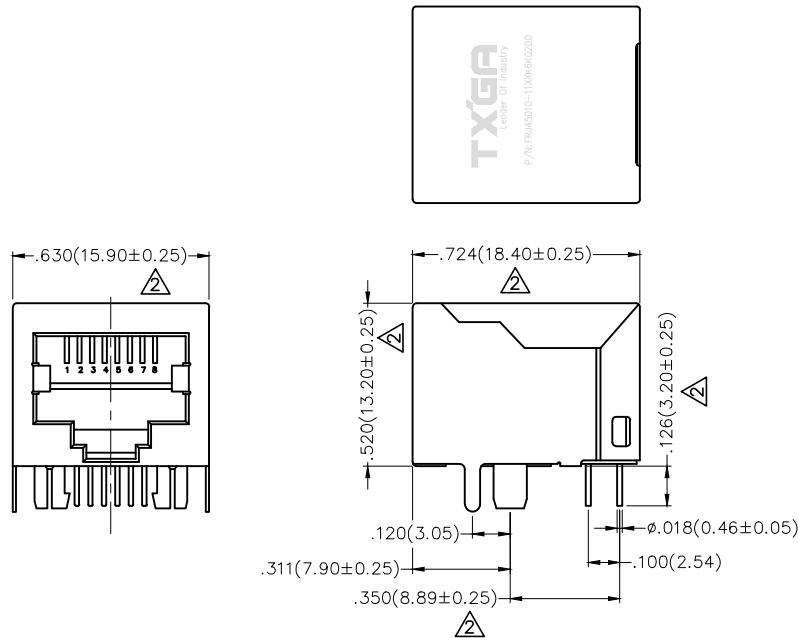
**Material and Plating**

Housing: PBT UL 94V-0  
Contact: Phosphor Bronze/Gold Plated  
Shell: Copper Alloy/Nickel Plated


**Ordering Information**

FRJ45 010 — 1 1 XX K6 K 0 2 D 0  
1 2 3 4 5 6 7 8 9

1	Category FRJ45-RJ45 Connector	2	Distinction No. 010	3	Ports options 1-1 Port	4	Plating 1-Gold Plated		
5	Thickness of plating 00-Gold flash 03-3μ" Custom plate available	6	Color-Resin K6-Black	7	Packaging K-Tray	8	Contact type 2-Round pin	9	distinction type D-D type



Recommended P.C. Board Layout

THIRD ANGLE PROJECTION	GENERAL TOLERANCES (UNLESS SPECIFIED)		APPROVE BY FRANK	DATE 1/AUG/13	PART NO. △ FRJ45010-11XXK6K02D0	ITEM NO. FRJ45010	 Leader Of Industry
	DESIGN UNITS Inch (metric)	X.±.012(0.30) X.X±.008(0.20) X.XX±.006(0.15) X.XXX±.004(0.10)	X.±5° .X±2° .XX±1° .XXX±0.5°	CHECKED BY CHERRY	DATE 1/AUG/13	TITLE RJ45 Connectors 8P8C 90°Angle	
SCALE 5:1	SIZE A4		DRAWN BY JACOB	DATE 1/AUG/13	THIS DRAWING CONTAINS INFORMATION THAT IS PROPRIETARY TO TXGA INDUSTRIAL ELECTRONICS(S.Z)CO.,LTD AND SHOULD NOT BE USED WITHOUT WRITTEN PERMISSION		