

1 2 3 4 5 6 7 8

REV	LOCATIONS	DESCRIPTION	DATE	REVISER	APPD

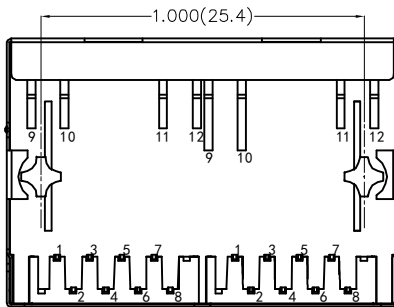
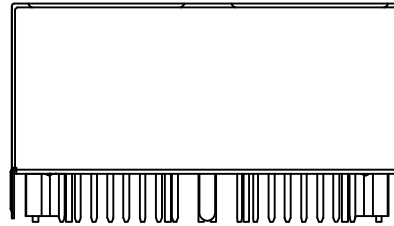
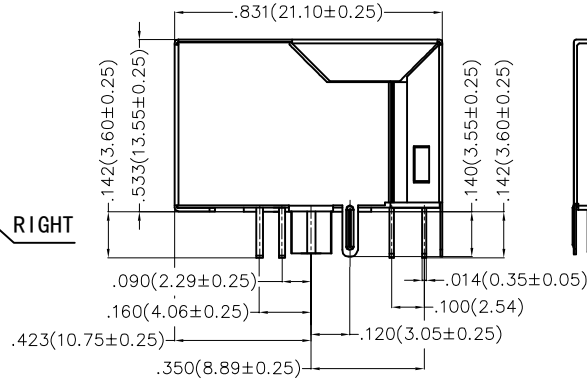
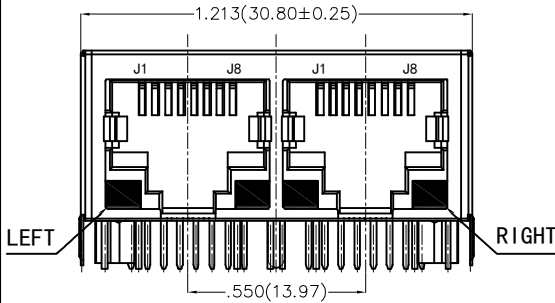
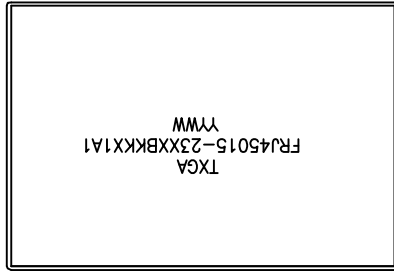
SPECIFICATIONS

Electrical

Current Rating: 1.5A AC(rms)/DC  
 Voltage Rating: 125V AC(rms)/DC  
 Contact Resistance: 20 mΩ Max  
 Insulation Resistance: 500 MΩ Min / DC 500V  
 Withstanding Voltage: 500V AC r.m.s  
 Operating Temperature: -40°C~+85°C  
 Durability: 750 Cycles Min  
 Mating Force: 23N Max

Material and Plating

Housing: PBT (UL 94V-0) Black  
 Terminals Bracket: PBT (UL 94V-0) Black  
 Contact: Phosphor Bronze/ Selective gold in contact area, tin on tail  
 Shell: Brass/Nickel Plated



Ordering Information

FRJ45 015 — 2 3 XX BK K X 1 A 1  
 1 2 3 4 5 6 7 8 9 10 11

1 Category FRJ45-RJ45 Connector	2 Distinction No. 015	3 Ports options 2-2 Ports	4 Plating 3-Selective gold in contact area, tin on tail	5 Thickness of plating 06-6μ" Custom plate available
6 Color-Resin BK-Black	7 Packaging K-Tray	8 LED style 1-L: Yellow R: Green 2-L: Green R: Yellow	9 Contact type 1-Square pin	10 Distinction type A-A type
11 Pin circuits 1-100Base-T				

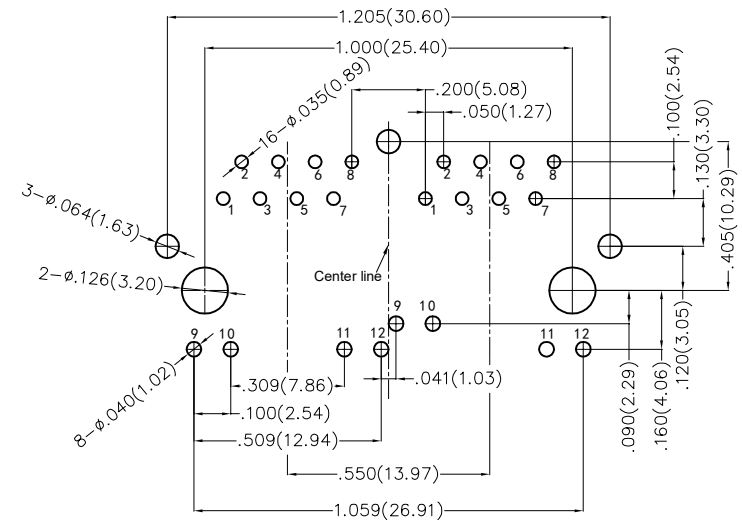
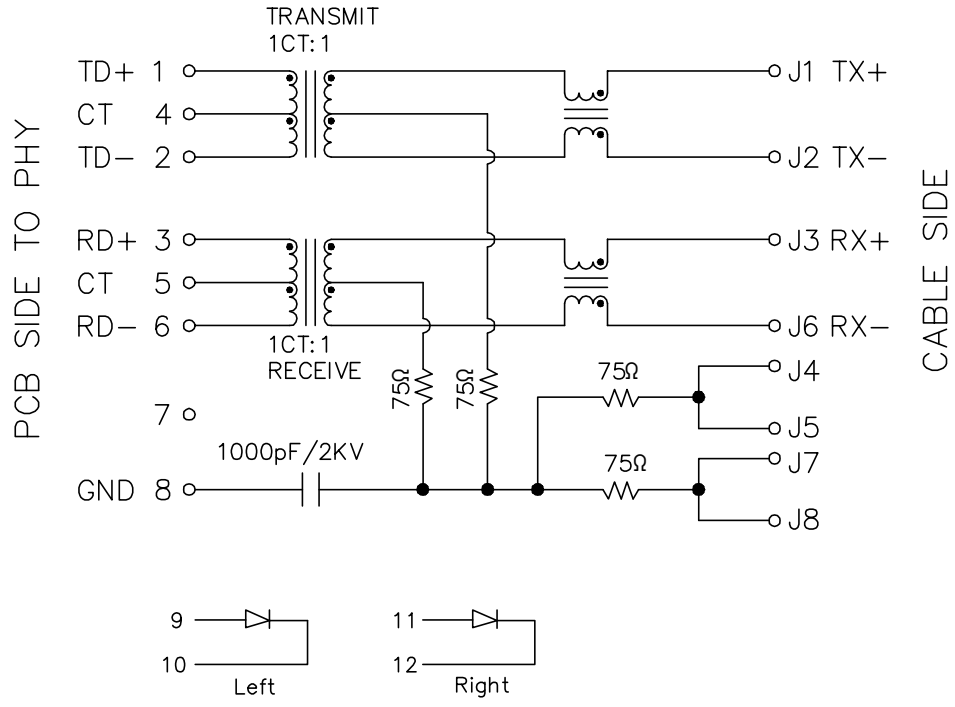
<p>THIRD ANGLE PROJECTION</p>	GENERAL TOLERANCES (UNLESS SPECIFIED)		APPROVE BY LEO	DATE 09/DEC/24	PART NO. FRJ45015-23XXBKKX1A1	ITEM NO. FRJ45015	<p>Building Technology Cornerstone</p>
	X.±.010(0.25)	.X'±3'	CHECKED BY GISELLE	DATE 09/DEC/24	TITLE RJ45 Connector 8P8C 90°Angle(100Base-T)		
	X.X±.008(0.20)	.X'±2'	DRAWN BY MATT	DATE 09/DEC/24	THIS DRAWING CONTAINS INFORMATION THAT IS PROPRIETARY TO TXGA INDUSTRIAL ELECTRONICS(S.Z)CO.,LTD AND SHOULD NOT BE USED WITHOUT WRITTEN PERMISSION		
	X.XX±.004(0.10)	.XX'±1.5'					
SCALE 5:1	SIZE A4	X.XXX±.002(0.05)	.XX'±1.0'				

1 2 3 4 5 6 7 8

REV	LOCATIONS	DESCRIPTION	DATE	REVISER	APPD

Electrical Specifications

- Turn ratio: 1~2 : J1~J2= 1CT:1CT(±2%)  
3~6: J3~J6= 1CT:1CT(±2%)
- OCL: 350uH Min. at 100KHz 100mV 8mA DC
- Insertion loss: -1.0dB Max. 1MHz~100MHz
- Return loss: -20dB Min. 1MHz~10MHz  
-16dB Min. 10MHz~30MHz  
-12dB Min. 30MHz~60MHz  
-10dB Min. 60MHz~80MHz
- Cross talk: -40dB Min. 1MHz~30MHz  
-35dB Min. 30MHz~60MHz  
-30dB Min. 60MHz~100MHz
- CMR: -30dB Min. 1MHz~100MHz
- Hi-Pot: 1500V AC & 2250V DC 6S 1mA PRI to SEC



Recommended P.C.Board Layout

Specification LED

Standard LED Color	LED Wavelength	Foward(A)	Foward(V)
Green	568nm	20mA	1.85-2.45V
Yellow	585nm	20mA	1.7-2.2V

<p>THIRD ANGLE PROJECTION</p>	GENERAL TOLERANCES (UNLESS SPECIFIED)		APPROVE BY	DATE	PART NO.	ITEM NO.	<p>Building Technology Cornerstone</p>
	X.±0.10(0.25)	.X'±3'	LEO	09/DEC/24	FRJ45015-23XXBKKX1A1	FRJ45015	
	X.X±.008(0.20)	.X'±2'	CHECKED BY	DATE	TITLE	REV 0	
	X.XX±.004(0.10)	.XX'±1.5'	GISELLE	09/DEC/24	RJ45 Connector 8P8C 90°Angle(100Base-T)	SHEET NO. 2/2	
SCALE	SIZE	X.XXX±.002(0.05)	.XX'±1.0'	DRAWN BY	DATE	THIS DRAWING CONTAINS INFORMATION THAT IS PROPRIETARY TO TXGA INDUSTRIAL ELECTRONICS(S.Z)CO.,LTD AND SHOULD NOT BE USED WITHOUT WRITTEN PERMISSION	
5:1	A4			MATT	09/DEC/24		