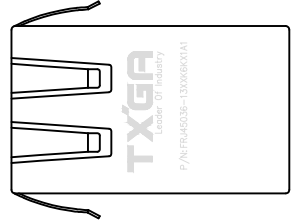
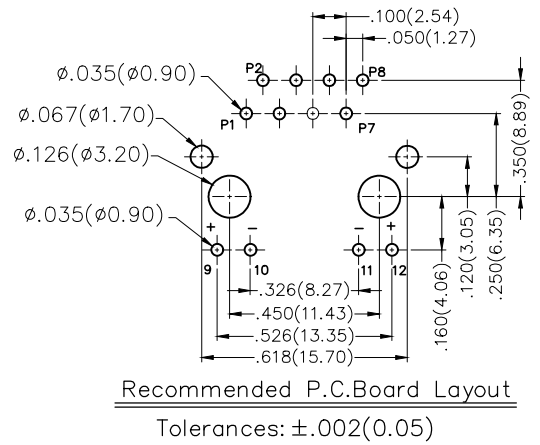


1 2 3 4 5 6 7 8

REV	LOCATIONS	DESCRIPTION	DATE	REVISER	APPD
1	△	Part No.: Change FRJ45119 into FRJ45036	31/MAY/18	KATE	ERIC
2	△	1. Structure change, 2. Tolerances change	20/APR/20	KATE	CHERRY

A  
B  
C  
D  
E  
F

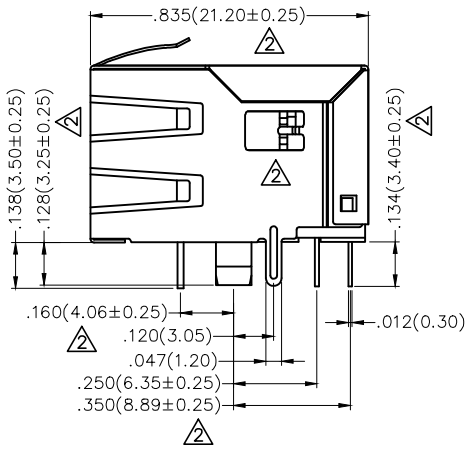
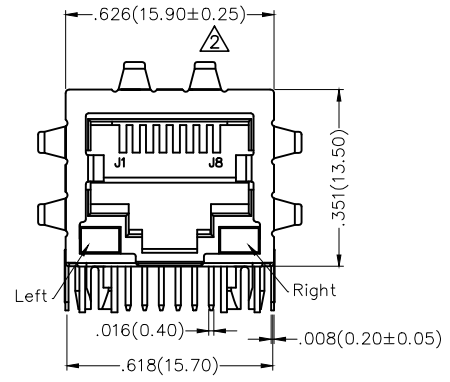
A  
B  
C  
D  
E  
F



**SPECIFICATIONS**

**Electrical**  
 Current Rating: 1.5A AC(rms)/DC  
 Voltage Rating: 150V AC(rms)/DC  
 Contact Resistance: 30 mΩ Max  
 Insulation Resistance: 500 MΩ Min / DC 500V  
 Withstanding Voltage: 1000V AC r.m.s  
 Operating Temperature: -40°C~+85°C

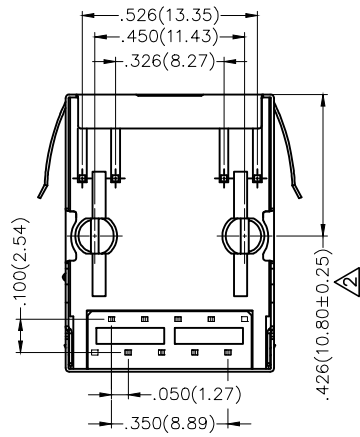
**Material and Plating**  
 Housing: PA46, 94V-0 ,Black  
 Contact: Phosphor Bronze/Gold Plated/Selective gold  
 in contact area, tin on tail  
 Shell: Brass/Nickel Plated




**Ordering Information**

FRJ45 036 — 1 3 XX K6 K X 1 A 1  
 1 2 3 4 5 6 7 8 9 10 11

1 Category FRJ45-RJ45 Connector	2 Distinction No. 036	3 Ports options 1-1 Port	4 Plating 3-Selective gold in contact area, tin on tail	5 Thickness of plating 00-Gold flash 03-3μ" Custom plate available
6 Color-Resin K6-Black	7 Packaging K-Tray	8 LED style 1-L: Yellow R: Green 2-L: Green R: Yellow	9 Contact type 1-Square pin	10 distinction type A-A type
				11 Pin circuits 1-100Base-T

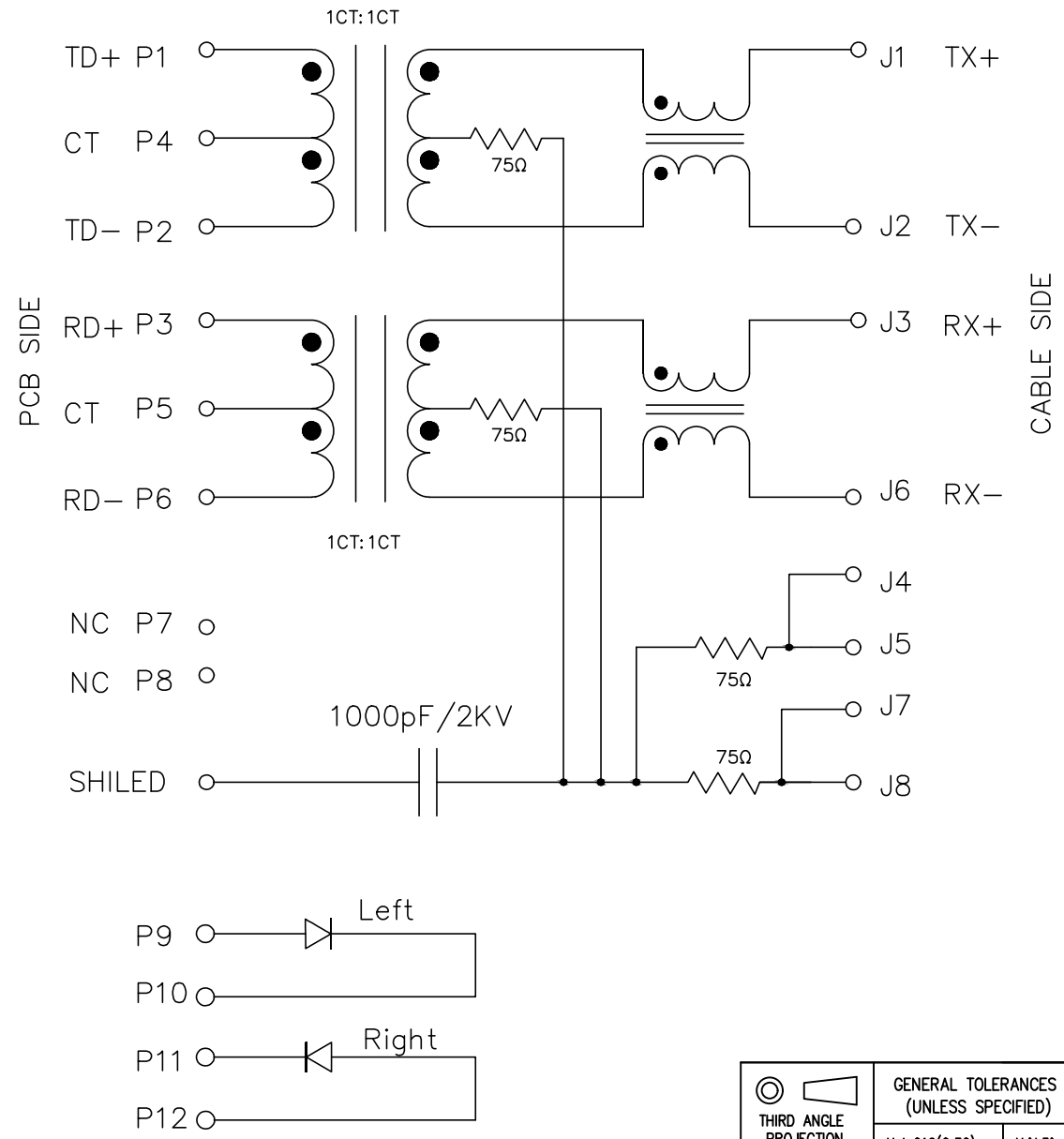


THIRD ANGLE PROJECTION	GENERAL TOLERANCES (UNLESS SPECIFIED)		APPROVE BY FRANK	DATE 18/JUN/13	PART NO. △ FRJ45036-13XXK6KX1A1	ITEM NO. FRJ45036	 Leader Of Industry
	DESIGN UNITS Inch (metric)	X.±.012(0.30) X.X±.008(0.20) X.XX±.006(0.15) X.XXX±.004(0.10)	X.±5° X.±2° X.X±1° X.XXX±0.5°	CHECKED BY KEVIN	DATE 18/JUN/13	TITLE RJ45 Connectors 8P8C 90°Angle(100Base-T)	
SCALE 5:1	SIZE A4	DRAWN BY CHERRY		DATE 18/JUN/13	THIS DRAWING CONTAINS INFORMATION THAT IS PROPRIETARY TO TXGA INDUSTRIAL ELECTRONICS(S.Z)CO.,LTD AND SHOULD NOT BE USED WITHOUT WRITTEN PERMISSION		

1 2 3 4 5 6 7 8

REV	LOCATIONS	DESCRIPTION	DATE	REVISER	APPD

Schematic

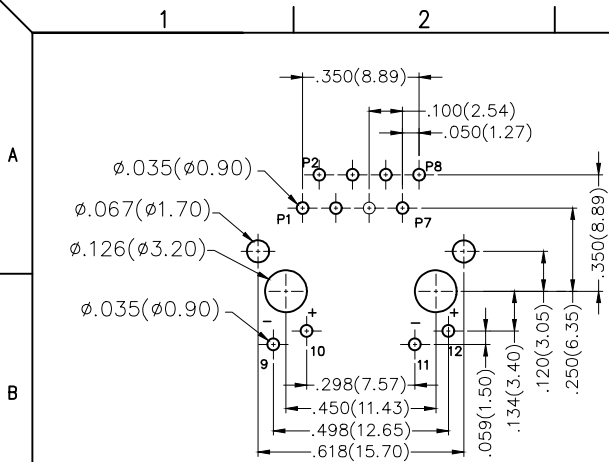


Parameter	Specifications
Turns Ratio	1:1±3%
Inductance(OCL)	350uH Min@100KHz/100mV With 8mA DC Bias
Insertion Loss	-1.0dB MAX@0.3MHz-100MHz;
Return Loss (Z out=100 OHM)	-18dB Min@1MHz-30MHz; -13dB Min@30MHz-60MHz -10dB Min@60MHz-100MHz
Cross Talk (Adjacent Channels)	-30dB Min@1MHz-100MHz
Common Mode Rejection Ratio	-30dB Min@1MHz-100MHz
HI-POT	500VAC

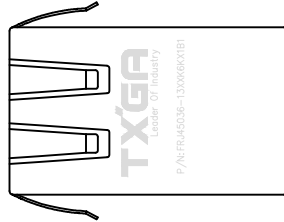
LED SPECIFICATION			
STANDARD LED	WAVELENGTH	Forward V(max)	TYP
GREEN	565nm	2.4V	2.2V
YELLOW	590nm	2.5V	2.1V

\* With A Forward Current of 20mA

<p>THIRD ANGLE PROJECTION</p>	GENERAL TOLERANCES (UNLESS SPECIFIED)		APPROVE BY	DATE	PART NO.	ITEM NO.	<p>Leader Of Industry</p>
	X.±.012(0.30)	X.±5°	FRANK	18/JUN/13	FRJ45036-13XXK6KX1A1	FRJ45036	
	X.X±.008(0.20)	.X'±2°	CHECKED BY	DATE	TITLE RJ45 Connectors 8P8C 90°Angle(100Base-T)		
	X.XX±.006(0.15)	.XX'±1°	KEVIN	18/JUN/13	REV 2	SHEET NO. 2/2	
SCALE 5:1	SIZE A4	X.XXX±.004(0.10)	.XXX±0.5°	DRAWN BY	DATE	THIS DRAWING CONTAINS INFORMATION THAT IS PROPRIETARY TO TXGA INDUSTRIAL ELECTRONICS(S.Z)CO.,LTD AND SHOULD NOT BE USED WITHOUT WRITTEN PERMISSION	
				CHERRY	18/JUN/13		



Recommended P.C.Board Layout  
Tolerances:  $\pm .002(0.05)$

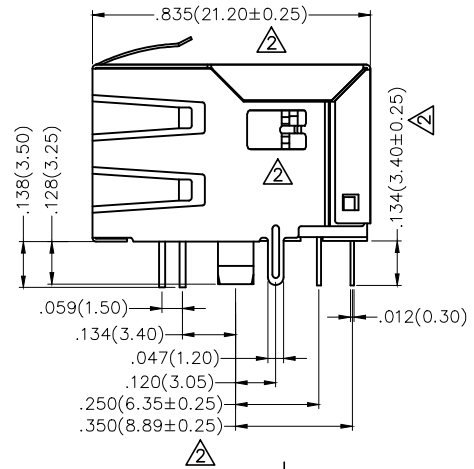
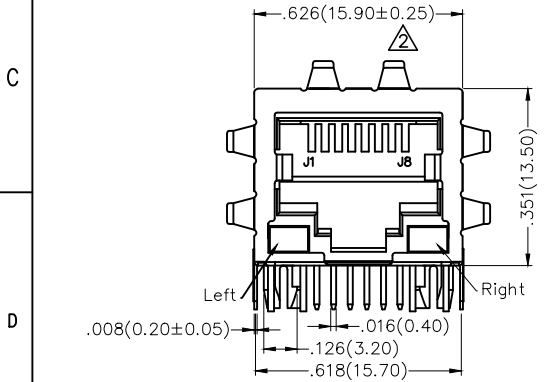


REV	LOCATIONS	DESCRIPTION	DATE	REVISER	APPD
1		Part No.: Change FRJ45119 into FRJ45036	31/MAY/18	KATE	ERIC
2		1. Structure change, 2. Tolerances change	20/APR/20	KATE	CHERRY

SPECIFICATIONS

Electrical  
 Current Rating: 1.5A AC(rms)/DC  
 Voltage Rating: 150V AC(rms)/DC  
 Contact Resistance: 30 mΩ Max  
 Insulation Resistance: 500 MΩ Min / DC 500V  
 Withstanding Voltage: 1000V AC r.m.s  
 Operating Temperature: 0°C~+70°C  
 Storage Temperature: -40°C~+85°C

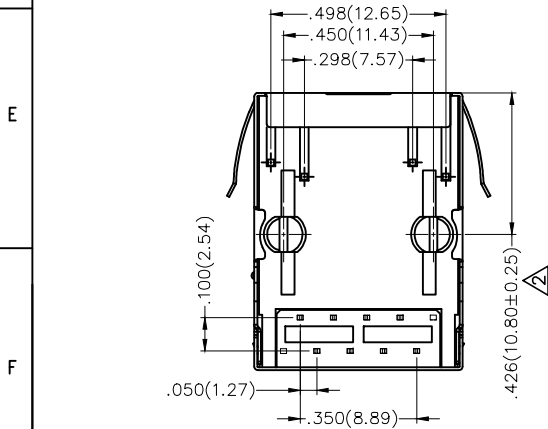
Material and Plating  
 Housing: PA46, 94V-0 ,Black  
 Contact: Phosphor Bronze/Selective gold  
 in contact area, tin on tail  
 Shell: Brass/Nickel Plated



Ordering Information

FRJ45 036 - 1 3 XX K6 K X 1 B 1  
 1 2 3 4 5 6 7 8 9 10 11

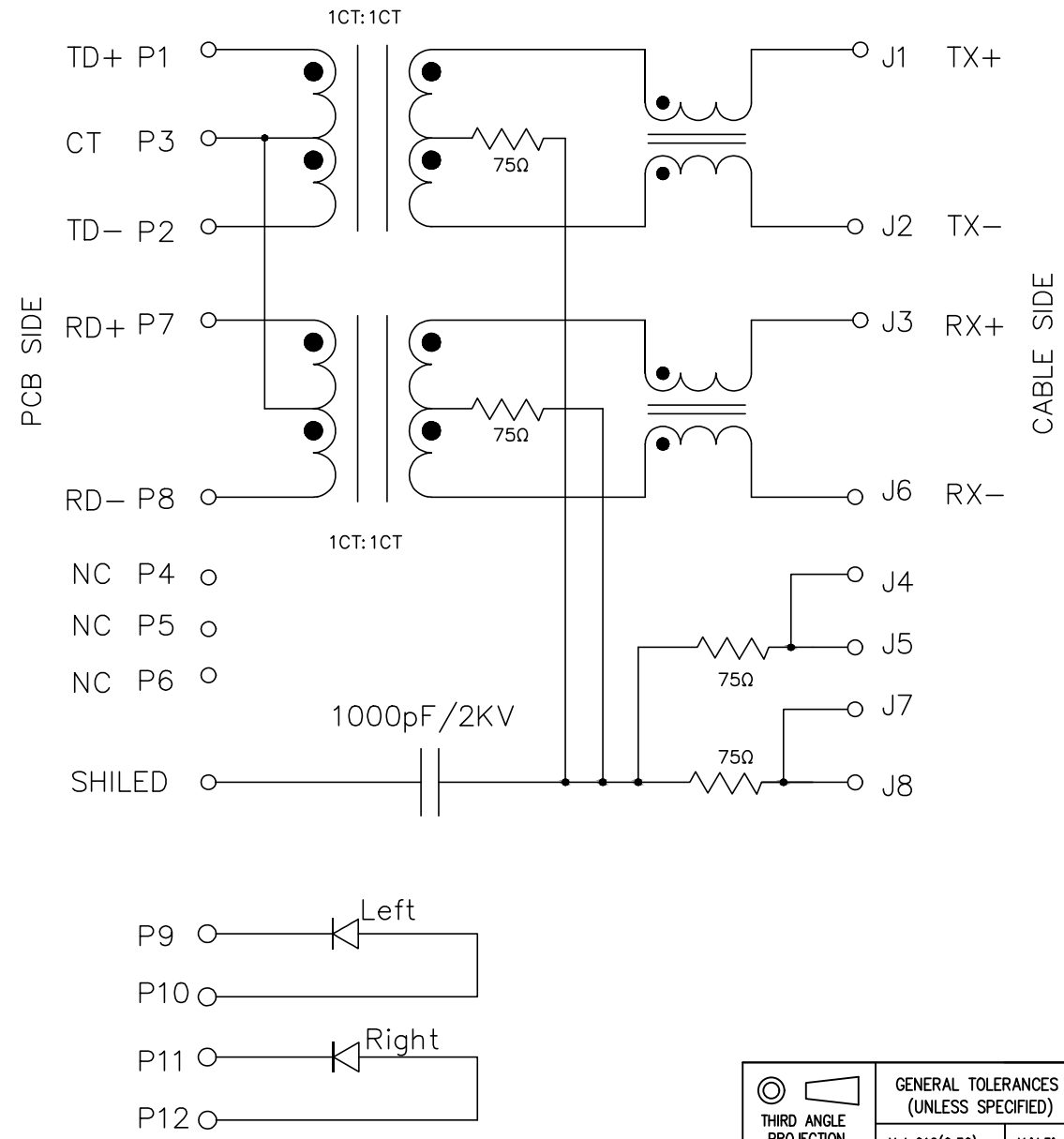
1 Category FRJ45-RJ45 Connector	2 Distinction No. 036	3 Ports options 1-1 Port	4 Plating 3-Selective gold in contact area, tin on tail	5 Thickness of plating 00-Gold flash 03-3μ" Custom plate available
6 Color-Resin K6-Black	7 Packaging K-Tray	8 LED style 1-L: Yellow R: Green 2-L: Green R: Yellow	9 Contact type 1-Square pin	10 distinction type B-B type
11 Pin circuits 1-100Base-T				



THIRD ANGLE PROJECTION	GENERAL TOLERANCES (UNLESS SPECIFIED)		APPROVE BY FRANK	DATE 18/JUN/13	PART NO. FRJ45036-13XXK6K1B1	ITEM NO. FRJ45036	 Leader Of Industry
	DESIGN UNITS Inch (metric)	X.±.012(0.30) X.X±.008(0.20) X.XX±.006(0.15) X.XXX±.004(0.10)	X'.±5' X'.±2' .XX'±1" .XXX'±0.5'	CHECKED BY KEVIN	DATE 18/JUN/13	TITLE RJ45 Connectors 8P8C 90°Angle(100Base-T)	
SCALE 5:1	SIZE A4		DRAWN BY CHERRY	DATE 18/JUN/13	THIS DRAWING CONTAINS INFORMATION THAT IS PROPRIETARY TO TXGA INDUSTRIAL ELECTRONICS(S.Z)CO.,LTD AND SHOULD NOT BE USED WITHOUT WRITTEN PERMISSION		REV 2 SHEET NO. 1/2

REV	LOCATIONS	DESCRIPTION	DATE	REVISER	APPD

Schematic



Parameter	Specifications
Turns Ratio	1:1±2%
Inductance(OCL)	350uH Min@100KHz/100mV With 8mA DC Bias
Insertion Loss	-1.0dB MAX@0.3MHz-100MHz;
Return Loss (Z out=100 OHM)	-18dB Min@1MHz-30MHz; -13dB Min@30MHz-60MHz -10dB Min@60MHz-100MHz
Cross Talk (Adjacent Channels)	-30dB Min@1MHz-100MHz
Common Mode Rejection Ratio	-30dB Min@1MHz-100MHz
HI-POT	2250 VDC@60 SECONDS

LED SPECIFICATION			
STANDARD LED	WAVELENGTH	Forward V(max)	TYP
GREEN	565nm	2.4V	2.2V
YELLOW	590nm	2.5V	2.1V

\* With A Forward Current of 20mA

 THIRD ANGLE PROJECTION	GENERAL TOLERANCES (UNLESS SPECIFIED)		APPROVE BY FRANK	DATE 18/JUN/13	PART NO.  FRJ45036-13XXK6KX1B1	ITEM NO. FRJ45036	 Leader Of Industry	
	DESIGN UNITS Inch (metric)	X.X±.012(0.30) X.X±.008(0.20)	X'.±5' X'.±2'	CHECKED BY KEVIN	DATE 18/JUN/13	TITLE RJ45 Connectors 8P8C 90°Angle(100Base-T)		REV 2 SHEET NO. 2/2
	SCALE 5:1	SIZE A4	X.XX±.006(0.15) X.XX±.004(0.10)	DRAWN BY CHERRY	DATE 18/JUN/13	THIS DRAWING CONTAINS INFORMATION THAT IS PROPRIETARY TO TXGA INDUSTRIAL ELECTRONICS(S.Z)CO.,LTD AND SHOULD NOT BE USED WITHOUT WRITTEN PERMISSION		
			X'.±1' X'.XX±0.5'					