

REV	LOCATIONS	DESCRIPTION	DATE	REVISER	APPD
1	△	Part No.: Change FRJ45118 into FRJ45038	31/MAY/18	KATE	ERIC
2	△	Structure & Size Change	29/NOV/21	MATT	CHERRY

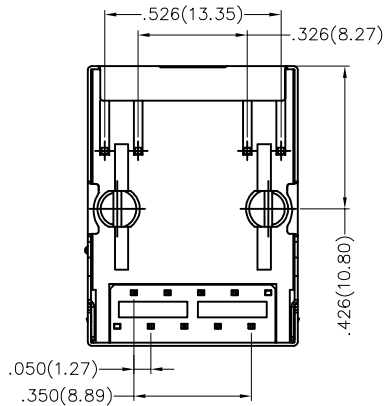
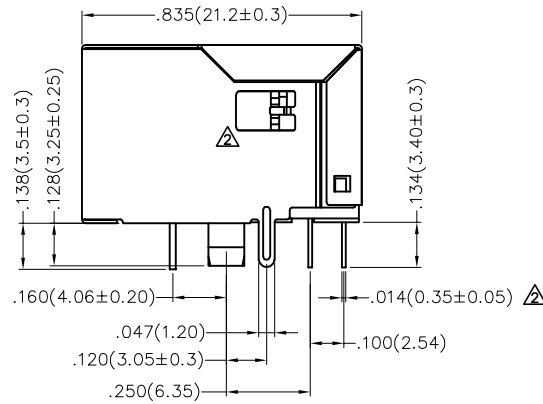
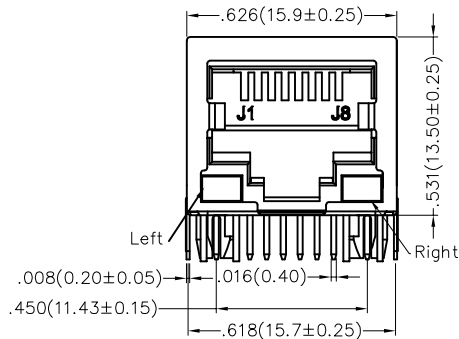
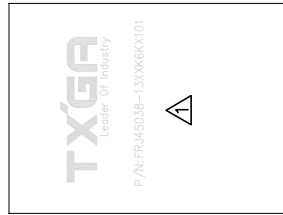
SPECIFICATIONS

Electrical

Current Rating: 1.5A AC(rms)/DC  
Voltage Rating: 150V AC(rms)/DC  
Contact Resistance: 30 mΩ Max  
Insulation Resistance: 500 MΩ Min / DC 500V  
Withstanding Voltage: 1000V AC r.m.s  
Operating Temperature: -40°C~+85°C

Material and Plating


Housing: PA46 (UL 94V-0), Black  
Contact: Phosphor Bronze/ Selective gold in contact area, tin on tail  
Shell: Brass/ Nickel Plated



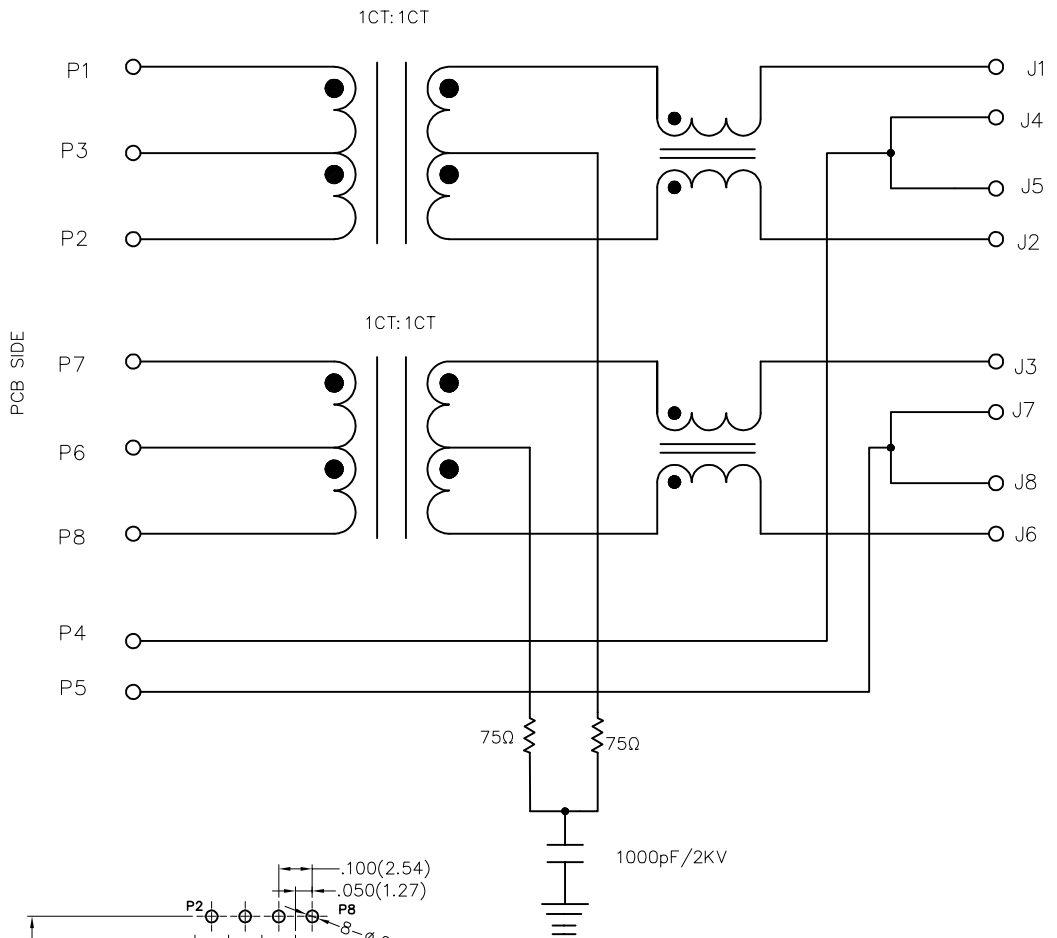
Ordering Information

FRJ45 038 — 1 3 XX K6 K X 1 0 1  
1 2 3 4 5 6 7 8 9 10

1   Category FRJ45-RJ45 Connector	2   Distinction No. 038	3   Ports options 1-1 Port	4   Plating 3-Selective gold in contact area, tin on tail	Thickness of plating 00-Gold flash 03-3μ" Custom plate available
6   Color-Resin K6-Black	7   Packaging K-Tray	8   LED style 1-L: Yellow R: Green 2-L: Green R: Yellow	9   Contact type 1-Square pin	10   Pin circuits 1-100Base-T

THIRD ANGLE PROJECTION	GENERAL TOLERANCES (UNLESS SPECIFIED)		APPROVE BY FRANK	DATE 18/JUN/13	PART NO. △ FRJ45038-13XXK6KX101	ITEM NO. FRJ45038	 Leader Of Industry
	DESIGN UNITS Inch (metric)	X.±.012(0.30) X.±5' X.X±.008(0.20) .X'±2'	CHECKED BY KEVIN	DATE 18/JUN/13	TITLE RJ45 Connectors 8P8C 90°Angle(100Base-T)		
SCALE 5:1	SIZE A4	X.XX±.006(0.15) .XX'±1' X.XXX±.004(0.10) .XXX'±0.5'	DRAWN BY CHERRY	DATE 18/JUN/13	THIS DRAWING CONTAINS INFORMATION THAT IS PROPRIETARY TO TXGA INDUSTRIAL ELECTRONICS(S.Z)CO.,LTD AND SHOULD NOT BE USED WITHOUT WRITTEN PERMISSION		

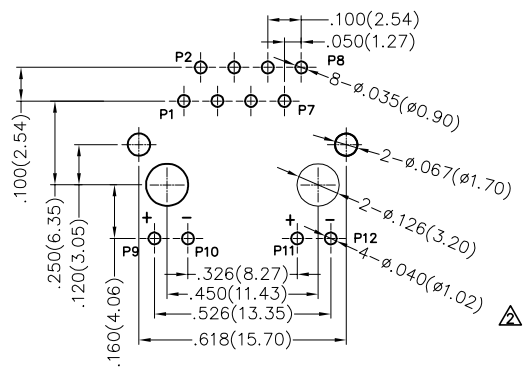
REV	LOCATIONS	DESCRIPTION	DATE	REVISED	APPD



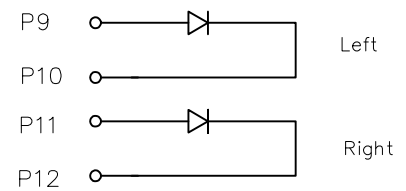
Parameter	Specifications
Turns Ratio	1:1±3%
Inductance(OCL)	350uH Min@100KHz/100mV With 8mA DC Bias
Insertion Loss	-1.0dB MAX@0.3MHz-100MHz;
Return Loss (Z out=100 OHM)	-18dB Min@1MHz-30MHz; -13dB Min@30MHz-60MHz -10dB Min@60MHz-100MHz
Cross Talk (Adjacent Channels)	-30dB Min@1MHz-100MHz
Common Mode Rejection Ratio	-30dB Min@1MHz-100MHz
DC Current/Voltage Rating-PSE Pins	350mA Maximum@57VDC(Continuous)
HI-POT	500VAC

LED SPECIFICATION			
STANDARD LED	WAVELENGTH	Forward V(max)	TYP
GREEN	565nm	2.4V	2.2V
YELLOW	590nm	2.5V	2.1V

\* With A Forward Current of 20mA



Recommended P.C.Board Layout  
Tolerances: ±.002(0.05)



 THIRD ANGLE PROJECTION	GENERAL TOLERANCES (UNLESS SPECIFIED)		APPROVE BY	DATE	PART NO.	ITEM NO.	 Leader Of Industry
	X.±.012(0.30)	X.±5'	FRANK	18/JUN/13	FRJ45038-13XXK6KX101	FRJ45038	
DESIGN UNITS Inch (metric)	X.X±.008(0.20)	X.±2'	CHECKED BY	DATE	TITLE	REV 2 SHEET NO. 2/2	
SCALE 5:1	X.XX±.006(0.15)	.XX±1'	KEVIN	18/JUN/13	RJ45 Connectors 8P8C 90°Angle(100Base-T)	THIS DRAWING CONTAINS INFORMATION THAT IS PROPRIETARY TO TXGA INDUSTRIAL ELECTRONICS(S.Z)CO.,LTD AND SHOULD NOT BE USED WITHOUT WRITTEN PERMISSION	
SIZE A4	X.XXX±.004(0.10)	.XXX±0.5'	DRAWN BY CHERRY	DATE 18/JUN/13			