

| REV | LOCATIONS | DESCRIPTION | DATE | REVISER | APPD |
|-----|-----------|--|-----------|---------|------|
| 1 | △ | 1: Update tolerances 2: Update material | 16/APR/24 | MATT | LEO |

SPECIFICATIONS

Electrical

Current Rating: 1.5A AC(rms)/DC
Voltage Rating: 125V AC(rms)/DC
Contact Resistance: 30 mΩ Max
Insulation Resistance: 500 MΩ Min / DC 500V
Withstanding Voltage: 1000V AC r.m.s
Operating Temperature: -40°C~+85°C

Mechanical

Durability: 750 cycles Min.
Mating force: 2.2KG.F Max.
Retention force: 7.7KG.F between jack and plug

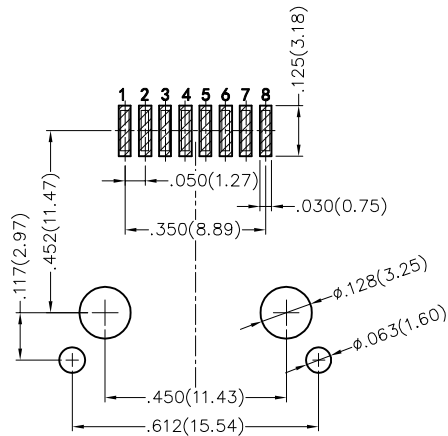
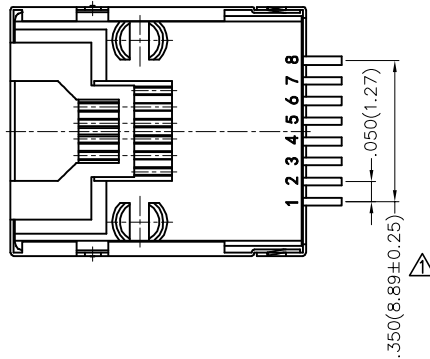
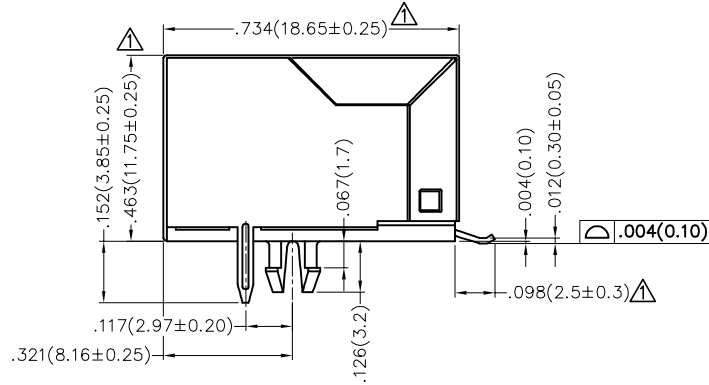
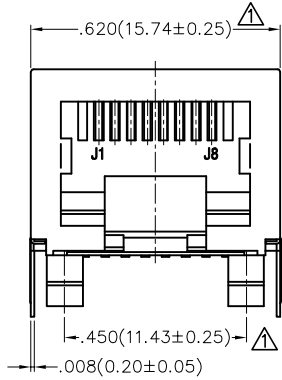
Material and plating

△ Housing: PA9T (UL 94V-0), Black
Contact: Phosphor Bronze/ Selective gold in contact area, tin on tail
Shell: Brass/ Nickel plated

Ordering Information

FRJ45 080 — 1 3 XX K6 K 0 1 0 0
1 2 3 4 5 6 7 9

| | | | | | | | |
|---|---|---|-------------------------|---|---------------------------|---|--|
| 1 | Category FRJ45-RJ45 Connector | 2 | Distinction No. 080 | 3 | Ports options 1-1 Port | 4 | Plating 3-Selective gold in contact area, tin on tail |
| 5 | Thickness of plating 00-Gold flash 06-6μ" Custom plate available | 6 | Color-Resin K6-Black | 7 | Packaging K-Tray | 9 | Contact type 1-Square pin |



Recommended P.C.Board Layout

| | | | | | | | | |
|-------------------------------|---------------------------------------|------------------|----------------------|-------------------|--|----------------------|-------------------------------------|-------|
| THIRD ANGLE PROJECTION | GENERAL TOLERANCES (UNLESS SPECIFIED) | | APPROVE BY FRANK | DATE 16/SEP/18 | PART NO. FRJ45080-13XXK6K0100 | ITEM NO. FRJ45080 | Building Technology Cornerstone | |
| | X.±.012(0.30) | X.±5' | CHECKED BY CHERRY | DATE 16/SEP/18 | TITLE RJ45 Connector 8P8C 90° Angle | | | REV 1 |
| DESIGN UNITS Inch (metric) | X.X±.008(0.20) | .X'±2" | DRAWN BY KATE | DATE 16/SEP/18 | THIS DRAWING CONTAINS INFORMATION THAT IS PROPRIETARY TO TXGA INDUSTRIAL ELECTRONICS(S.Z)CO.,LTD AND SHOULD NOT BE USED WITHOUT WRITTEN PERMISSION | | | |
| SCALE 5:1 | SIZE A4 | X.XX±.006(0.15) | | | | | | |
| | | X.XXX±.004(0.10) | | | | | | |