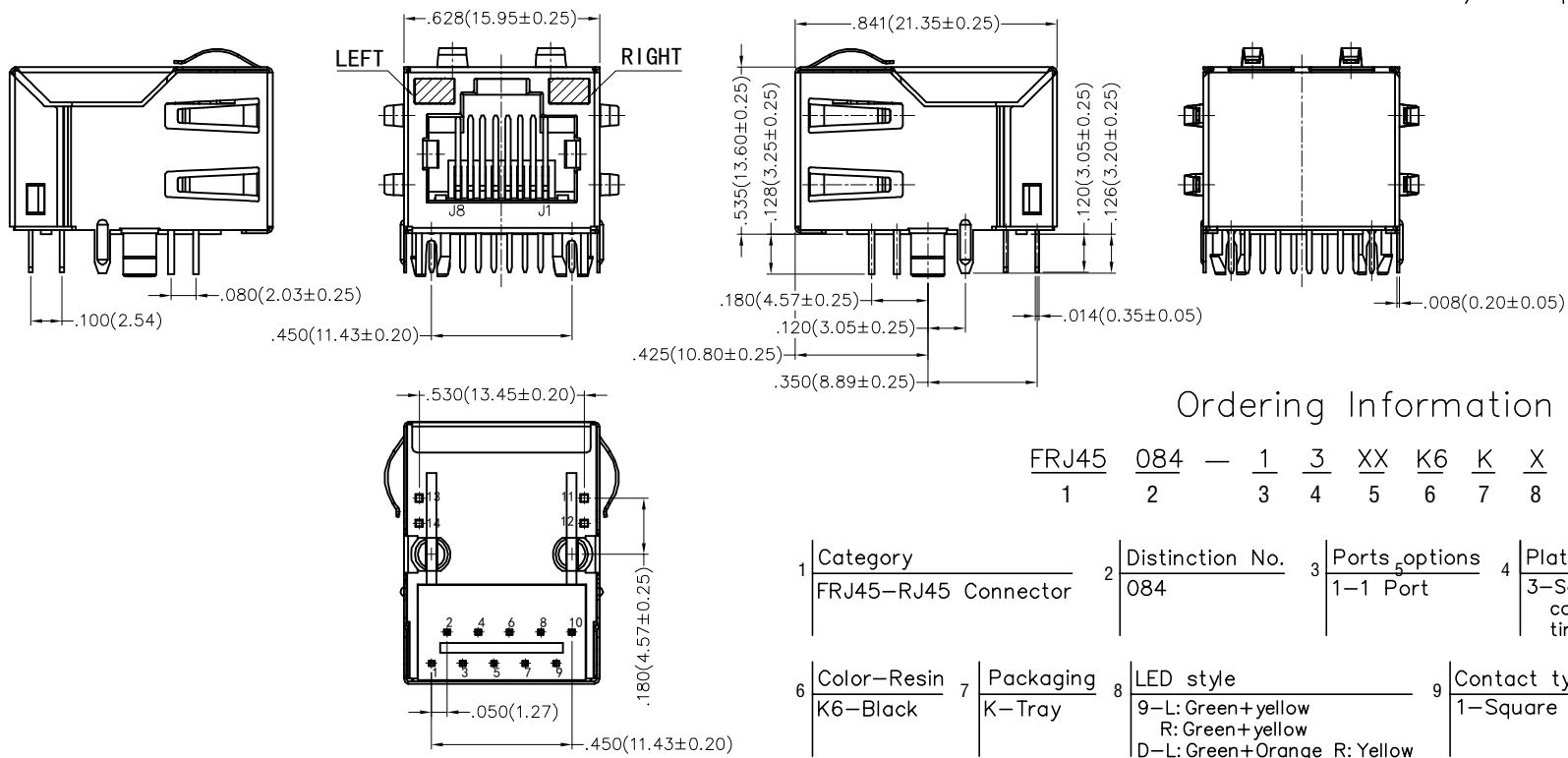
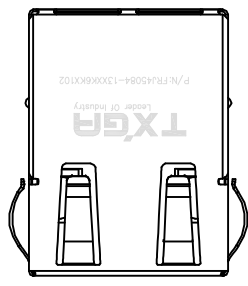


REV	LOCATIONS	DESCRIPTION	DATE	REVISER	APPD
1	△	Material: Change PA66 into PBT Change the Return loss Specifications	14/JAN/22	MATT	CHERRY

SPECIFICATIONS

Electrical  
 Current Rating: 1.5A AC(rms)/DC  
 Voltage Rating: 125V AC(rms)/DC  
 Contact Resistance: 30 mΩ Max  
 Insulation Resistance: 500 MΩ Min / DC 500V  
 Withstanding Voltage: 500V AC r.m.s  
 Operating Temperature: -40°C~+85°C

Material and plating  
 △ Housing: PBT (UL 94V-0), Black  
 Contact: Phosphor Bronze/ Selective gold on contact area, tin on tail  
 Shell: Brass/ Nickel plated



Ordering Information

FRJ45 084 - 1 3 XX K6 K X 1 0 2  
 1 2 3 4 5 6 7 8 9 10

1 Category FRJ45-RJ45 Connector	2 Distinction No. 084	3 Ports_options 1-1 Port	4 Plating 3-Selective gold on contact area, tin on tail	Thickness of plating 00-Gold flash 06-6μ" Custom plate available
6 Color-Resin K6-Black	7 Packaging K-Tray	8 LED style 9-L: Green+yellow R: Green+yellow D-L: Green+Orange R: Yellow	9 Contact type 1-Square pin	10 Pin circuits 2-1000Base-T

<p>THIRD ANGLE PROJECTION</p>	GENERAL TOLERANCES (UNLESS SPECIFIED)		APPROVE BY FRANK	DATE 16/APR/18	PART NO. FRJ45084-13XXK6KX102	ITEM NO. FRJ45084	<p>Leader Of Industry</p>		
	X.±.012(0.30)	X.±5'	CHECKED BY CHERRY	DATE 16/APR/18	TITLE RJ45 Connector 10P8C 90° Angle (1000Base-T)			REV 1	SHEET NO. 1/2
	X.X±.008(0.20)	.X'±2'	DRAWN BY KATE	DATE 16/APR/18	THIS DRAWING CONTAINS INFORMATION THAT IS PROPRIETARY TO TXGA INDUSTRIAL ELECTRONICS(S.Z)CO.,LTD AND SHOULD NOT BE USED WITHOUT WRITTEN PERMISSION				

REV	LOCATIONS	DESCRIPTION	DATE	REVISER	APPD

# SCHEMATIC

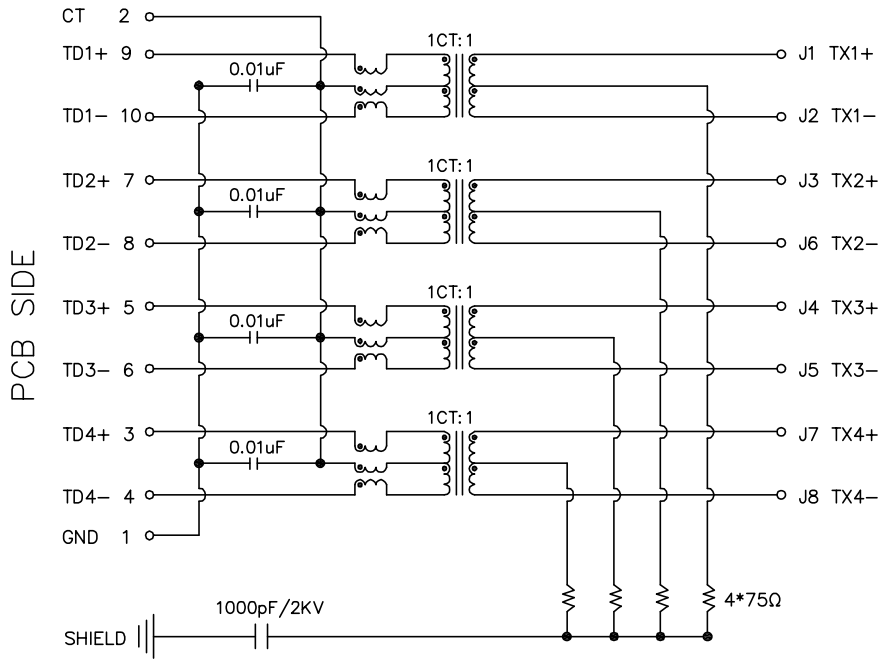
## Electrical Specifications

Turn ratio: 9~10: J1~J2=1CT:1CT(±2%)  
 7~8: J3~J6=1CT:1CT(±2%)  
 5~6: J4~J5=1CT:1CT(±2%)  
 3~4: J7~J8=1CT:1CT(±2%)

OCL: 350uH Min.@100KHz/100mV with 8mA DC bias  
 Insertion Loss: -1.0dB Max.@1~100MHz  
 Return loss: -18dB Min@1~30MHz  
 -14dB Min@30~60MHz  
 -12dB Min@60~80MHz  
 -10dB Min@80~100MHz

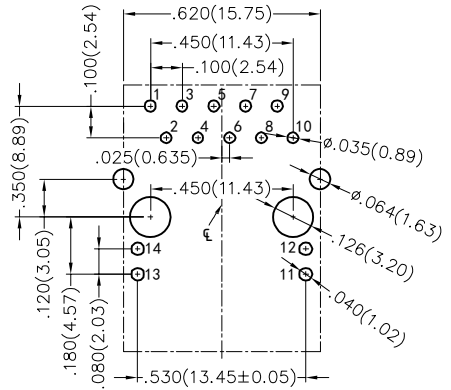
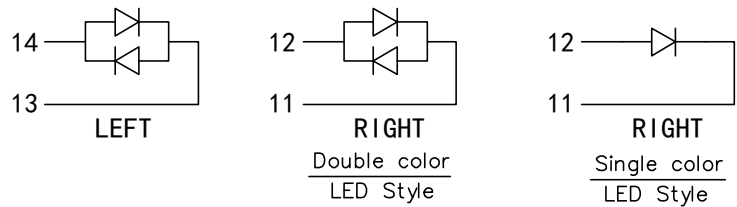
Cross talk: -40dB Min@1~30MHz  
 -35dB Min@30~60MHz  
 -30dB Min@60~100MHz

CMR: -30dB Min@1~100MHz  
 Hi-Pot: 1500V AC & 2250V DC  
 6S 1mA PRI TO SEC



CABLE SIDE

PCB SIDE



Recommended P.C.Board Layout

Tolerances: ±.002(0.05)

### LED Specification

Standard LED Color	LED Wavelength	Foward(A)	Foward(V)
Green	568nm	20mA	1.8-2.4V
Yellow	585nm	20mA	1.7-2.2V
Orange	585nm	20mA	1.7-2.2V

 THIRD ANGLE PROJECTION	GENERAL TOLERANCES (UNLESS SPECIFIED)		APPROVE BY	DATE	PART NO.	ITEM NO.	 Leader Of Industry
	X.±.012(0.30)	X'.±5'	FRANK	16/APR/18	FRJ45084-13XXK6KX102	FRJ45084	
	X.X±.008(0.20)	.X'±2'	CHECKED BY	DATE	TITLE		
	X.XX±.006(0.15)	.XX'±1'	CHERRY	16/APR/18	RJ45 Connector 10P8C 90° Angle (1000Base-T)		
SCALE	SIZE	X.XXX±.004(0.10)	.XXX'±0.5'	DRAWN BY	DATE	THIS DRAWING CONTAINS INFORMATION THAT IS PROPRIETARY TO TXGA INDUSTRIAL ELECTRONICS(S.Z)CO.,LTD AND SHOULD NOT BE USED WITHOUT WRITTEN PERMISSION	
5:1	A4			KATE	16/APR/18	REV 1	SHEET NO. 2/2