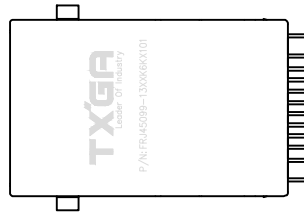


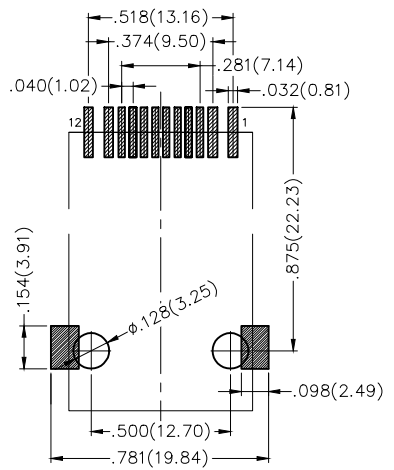
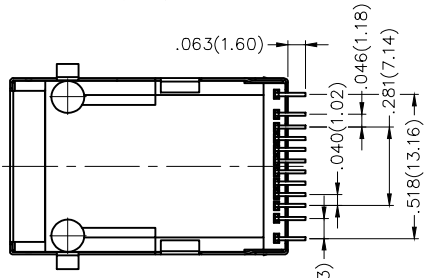
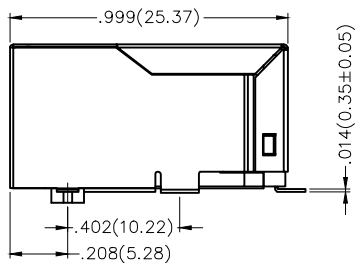
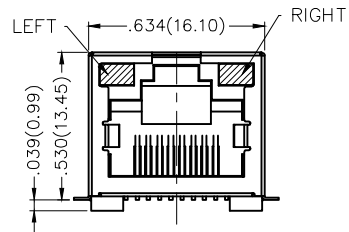
REV	LOCATIONS	DESCRIPTION	DATE	REVISER	APPD



**SPECIFICATIONS**

**Electrical**  
 Current Rating: 1.5A AC(rms)/DC  
 Voltage Rating: 125V AC(rms)/DC  
 Contact Resistance: 30 mΩ Max  
 Insulation Resistance: 500 MΩ Min / DC 500V  
 Withstanding Voltage: 500V AC r.m.s  
 Operating Temperature: -40°C~+85°C

**Material and plating**  
 Housing: LCP (UL 94V-0), Black  
 Contact: Phosphor Bronze/ Selective gold in contact area, tin on tail  
 Shell: Brass/ Nickel plated



Recommended P.C.Board Layout

**Ordering Information**

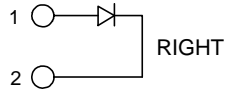
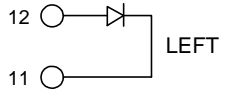
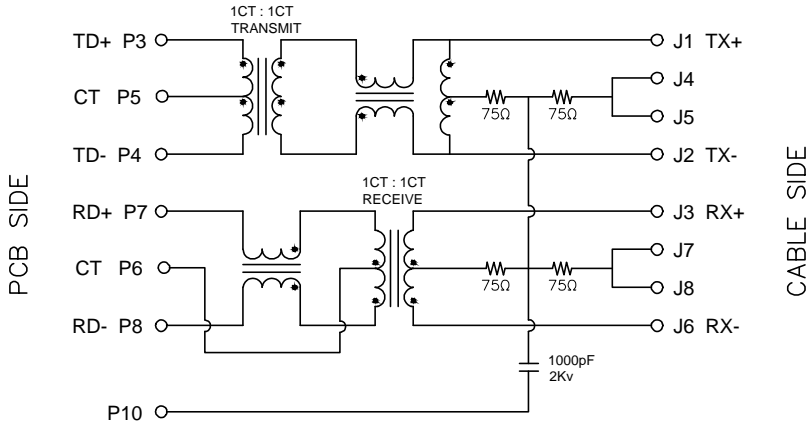
FRJ45 099 - 1 3 XX K6 K X 1 0 1  
 1 2 3 4 5 6 7 8 9 10

1 Category FRJ45-RJ45 Connector	2 Distinction No. 099	3 Ports options 1-1 Port	4 Plating 3-Selective gold in contact area, tin on tail	5 Thickness of plating 00-Gold flash 06-6μ" Custom plate available
6 Color-Resin K6-Black	7 Packaging K-Tray	8 LED style 1-L: Yellow R: Green 2-L: Green R: Yellow	9 Contact type 1-Square pin	10 Pin circuits 1-100Base-T

<p>THIRD ANGLE PROJECTION</p>	GENERAL TOLERANCES (UNLESS SPECIFIED)		APPROVE BY FRANK	DATE 16/OCT/18	PART NO. FRJ45099-13XXK6KX101	ITEM NO. FRJ45099	<p>Leader Of Industry</p>
	X.±.012(0.30)	X.±5'	CHECKED BY CHERRY	DATE 16/OCT/18	TITLE RJ45 Connector 8P8C 90° Angle (100Base-T)		
DESIGN UNITS Inch (metric)	X.X±.008(0.20)	X.±2'	DRAWN BY KATE	DATE 16/OCT/18	THIS DRAWING CONTAINS INFORMATION THAT IS PROPRIETARY TO TXGA INDUSTRIAL ELECTRONICS(S.Z)CO.,LTD AND SHOULD NOT BE USED WITHOUT WRITTEN PERMISSION		
SCALE 5:1	SIZE A4	X.XX±.006(0.15)	X.X±1'				
		X.XXX±.004(0.10)	.XXX±0.5'				

REV	LOCATIONS	DESCRIPTION	DATE	REVISER	APPD

SCHMATIC



ELECTRICAL

- Turn ratio (100KHz,0.1V):  
(P3-P4):(J1-J2)=1:1(±3%)  
(P7-P8):(J3-J6)=1:1(±3%)
- LX (100KHz,100mV,8mA,DC Bias):  
(P1,P2),(P7,P8)=350uH Min.
- DCR: (J1-J2),(J3-J6)=1.2Ω Max.
- HIPOT:  
(P3,P5,P4) to (J1,J2)=1500VAC for 60S.  
(P7,P6,P8) to (J3,J6)=1500VAC for 60S.
- Insertion Loss: -1.0dB Max. at 0.3~100MHz.
- Return loss:  
-20dB Min. at 1~30MHz.  
-15dB Min. at 30~60MHz.  
-10dB Min. at 60~80MHz.
- Cross talk:  
-30dB Min. at 1~100MHz.
- Common to common mode rejection:  
-30dB Min. at 1~100MHz.

<p>THIRD ANGLE PROJECTION</p>	GENERAL TOLERANCES (UNLESS SPECIFIED)		APPROVE BY FRANK	DATE 16/OCT/18	PART NO. FRJ45099-13XXX6KX101	ITEM NO. FRJ45099	<p>Leader Of Industry</p>	
	DESIGN UNITS Inch (metric)	X.±.012(0.30) X.X±.008(0.20)	X.±5° .X'±2'	CHECKED BY CHERRY	DATE 16/OCT/18	TITLE RJ45 Connector 8P8C 90° Angle (100Base-T)		
	SCALE 5:1	SIZE A4	X.XX±.006(0.15) X.XXX±.004(0.10)	DRAWN BY KATE	DATE 16/OCT/18	REV 0		SHEET NO. 2/2

THIS DRAWING CONTAINS INFORMATION THAT IS PROPRIETARY TO TXGA INDUSTRIAL ELECTRONICS(S.Z)CO.,LTD AND SHOULD NOT BE USED WITHOUT WRITTEN PERMISSION