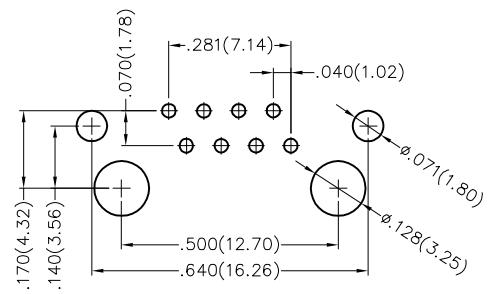
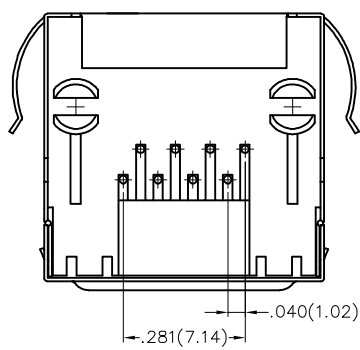
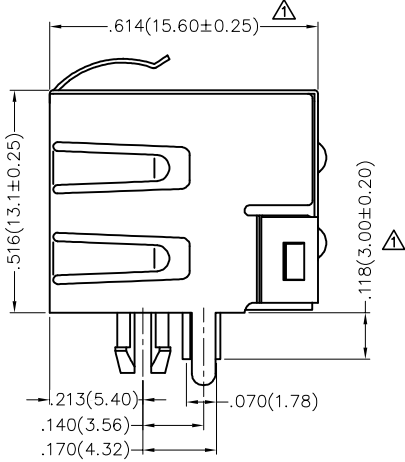
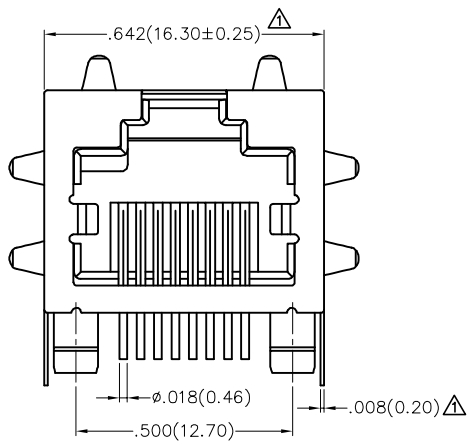
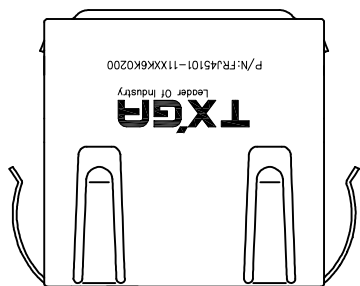


REV	LOCATIONS	DESCRIPTION	DATE	REVISER	APPD
1	△	Size Change	15/JUN/22	MATT	KATE



Recommended P.C.Board Layout

SPECIFICATIONS

Electrical
 Current Rating: 1.5A AC(rms)/DC
 Voltage Rating: 125V AC(rms)/DC
 Contact Resistance: 30 mΩ Max
 Insulation Resistance: 500 MΩ Min / DC 500V
 Withstanding Voltage: 1000V AC r.m.s
 Operating Temperature: -40°C~+80°C
 Mechanical
 Durability: 750 cycles Min.

Material and plating
 Housing: PA46 (UL 94V-0), Black
 Contact: Phosphor Bronze/ Gold plated
 Shell: Brass/ Nickel plated

Ordering Information

FRJ45 101 - 1 1 XX K6 K 0 2 0 0
 1 2 3 4 5 6 7 8

1 Category FRJ45-RJ45 Connector	2 Distinction No. 101	3 Ports options 1-1 Port	4 Plating 1-Gold Plated
5 Thickness of plating 00-Gold flash 03-3μ" Custom plate available	6 Color-Resin K6-Black	7 Packaging K-Tray	8 Contact type 2-Round pin

 THIRD ANGLE PROJECTION	GENERAL TOLERANCES (UNLESS SPECIFIED)		APPROVE BY FRANK	DATE 16/SEP/18	PART NO. FRJ45101-11XXK6K0200	ITEM NO. FRJ45101	 Leader Of Industry	
	X.±.012(0.30)	X.±5'	CHECKED BY CHERRY	DATE 16/SEP/18	TITLE RJ45 Connector 8P8C 90° Angle			REV 1
DESIGN UNITS Inch (metric)	X.X±.008(0.20)	.X'±2"	DRAWN BY KATE	DATE 16/SEP/18	THIS DRAWING CONTAINS INFORMATION THAT IS PROPRIETARY TO TXGA INDUSTRIAL ELECTRONICS(S.Z)CO.,LTD AND SHOULD NOT BE USED WITHOUT WRITTEN PERMISSION			
SCALE 5:1	SIZE A4	X.XX±.006(0.15)						
		X.XXX±.004(0.10)						