

1 2 3 4 5 6 7 8

REV	LOCATIONS	DESCRIPTION	DATE	REVISER	APPD

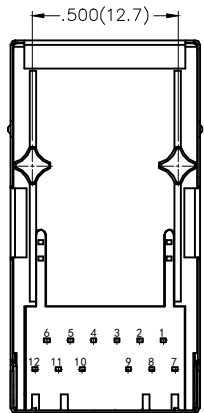
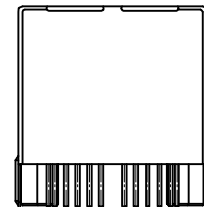
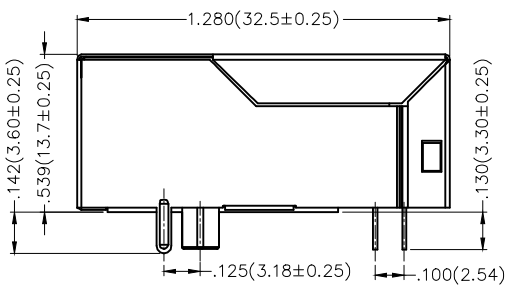
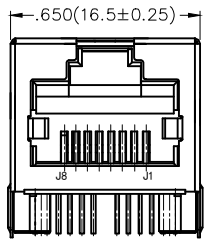
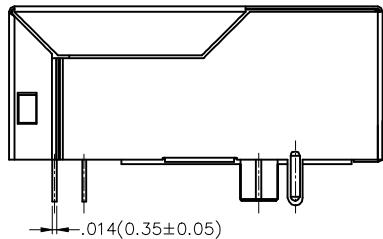
**SPECIFICATIONS**

**Electrical**

Current Rating: 1.5A AC(rms)/DC  
 Voltage Rating: 125V AC(rms)/DC  
 Contact Resistance: 30 mΩ Max  
 Insulation Resistance: 500 MΩ Min / DC 500V  
 Withstanding Voltage: 500V AC r.m.s  
 Operating Temperature: -40°C~+85°C

**Material and plating**

Housing: PBT (UL 94V-0), Black  
 Contact: Phosphor Bronze/ Selective gold in contact area, tin on tail  
 Shell: Brass/ Nickel plated



**Ordering Information**

FRJ45 105 — 1 3 XX K6 K 0 1 0 2  
 1 2 3 4 5 6 7 8 9

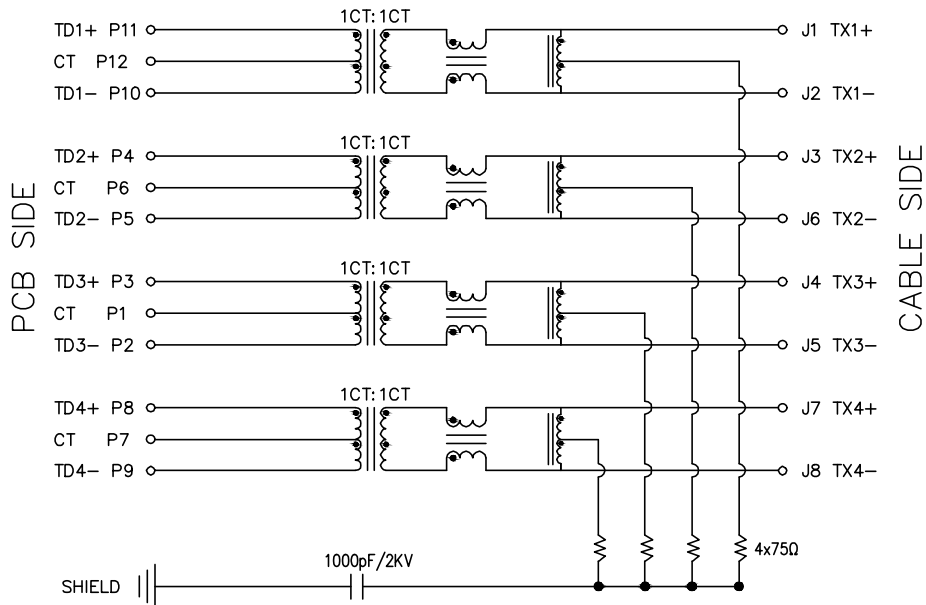
1 Category FRJ45-RJ45 Connector	2 Distinction No. 105	3 Ports options 1-1 Port	4 Plating 3-Selective gold in contact area, tin on tail
5 Thickness of plating 00-Gold flash 06-6μ" Custom plate available	6 Color-Resin K6-Black	7 Packaging K-Tray	8 Contact type 1-Square pin
		8 Pin circuits 2-1000Base-T	

<p>THIRD ANGLE PROJECTION</p>	GENERAL TOLERANCES (UNLESS SPECIFIED)		APPROVE BY FRANK	DATE 12/DEC/18	PART NO. FRJ45105-13XXK6K0102	ITEM NO. FRJ45105	<p>Leader Of Industry</p>	
	DESIGN UNITS Inch (metric)	X.X±.012(0.30)	X'±5'	CHECKED BY CHERRY	DATE 12/DEC/18	TITLE RJ45 Connector 12P8C 90° Angle (1000Base-T)		REV 0
SCALE 5:1	SIZE A4	X.XX±.006(0.15)	.XX'±1'	DRAWN BY KATE	DATE 12/DEC/18	THIS DRAWING CONTAINS INFORMATION THAT IS PROPRIETARY TO TXGA INDUSTRIAL ELECTRONICS(S.Z)CO.,LTD AND SHOULD NOT BE USED WITHOUT WRITTEN PERMISSION		

1 2 3 4 5 6 7 8

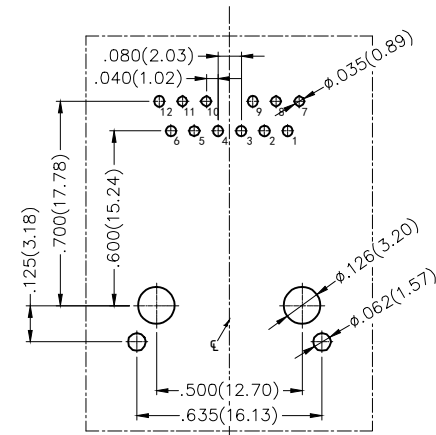
REV	LOCATIONS	DESCRIPTION	DATE	REVISER	APPD

### SCHEMATIC



### Electrical Specifications

- Turn ratio: 11~10: J1~J2=1CT:1CT(±2%)  
 4~5: J3~J6=1CT:1CT(±2%)  
 3~2: J4~J5=1CT:1CT(±2%)  
 8~9: J7~J8=1CT:1CT(±2%)
- 2. OCL: 350uH Min. @ 100KHz 100mV 8mA DC.
- 3. Insertion loss: -1.0dB Max. @ 1MHz~100MHz
- 4. Return loss: -18dB Min. @ 1MHz~30MHz;  
 -14dB Min. @ 30MHz~60MHz;  
 -12dB Min. @ 60MHz~80MHz;  
 -10dB Min. @ 80MHz~100MHz;
- 5. Cross talk: -40dB Min. @ 1MHz~30MHz;  
 -35dB Min. @ 30MHz~60MHz;  
 -30dB Min. @ 60MHz~100MHz;
- 6. CMR: -30dB Min. @ 1MHz~100MHz;
- 7. Hi-Pot: 2250V DC 6S 1mA PRI TO SEC.



### Recommended P.C.Board Layout

Tolerances: ±.002(0.05)

<p>THIRD ANGLE PROJECTION</p>	GENERAL TOLERANCES (UNLESS SPECIFIED)		APPROVE BY	DATE	PART NO.	ITEM NO.	<p>Leader Of Industry</p>
	X.±.012(0.30)	X.±5'	FRANK	12/DEC/18	FRJ45105-13XXK6K0102	FRJ45105	
	X.X±.008(0.20)	.X'±2'	CHECKED BY	DATE	TITLE		
	X.XX±.006(0.15)	.XX'±1'	CHERRY	12/DEC/18	RJ45 Connector 12P8C 90° Angle (1000Base-T)		
SCALE	SIZE	X.XXX±.004(0.10)	.XXX'±0.5'	DRAWN BY	DATE	THIS DRAWING CONTAINS INFORMATION THAT IS PROPRIETARY TO TXGA INDUSTRIAL ELECTRONICS(S,Z)CO.,LTD AND SHOULD NOT BE USED WITHOUT WRITTEN PERMISSION	
5:1	A4			KATE	12/DEC/18	REV 0	SHEET NO. 2/2