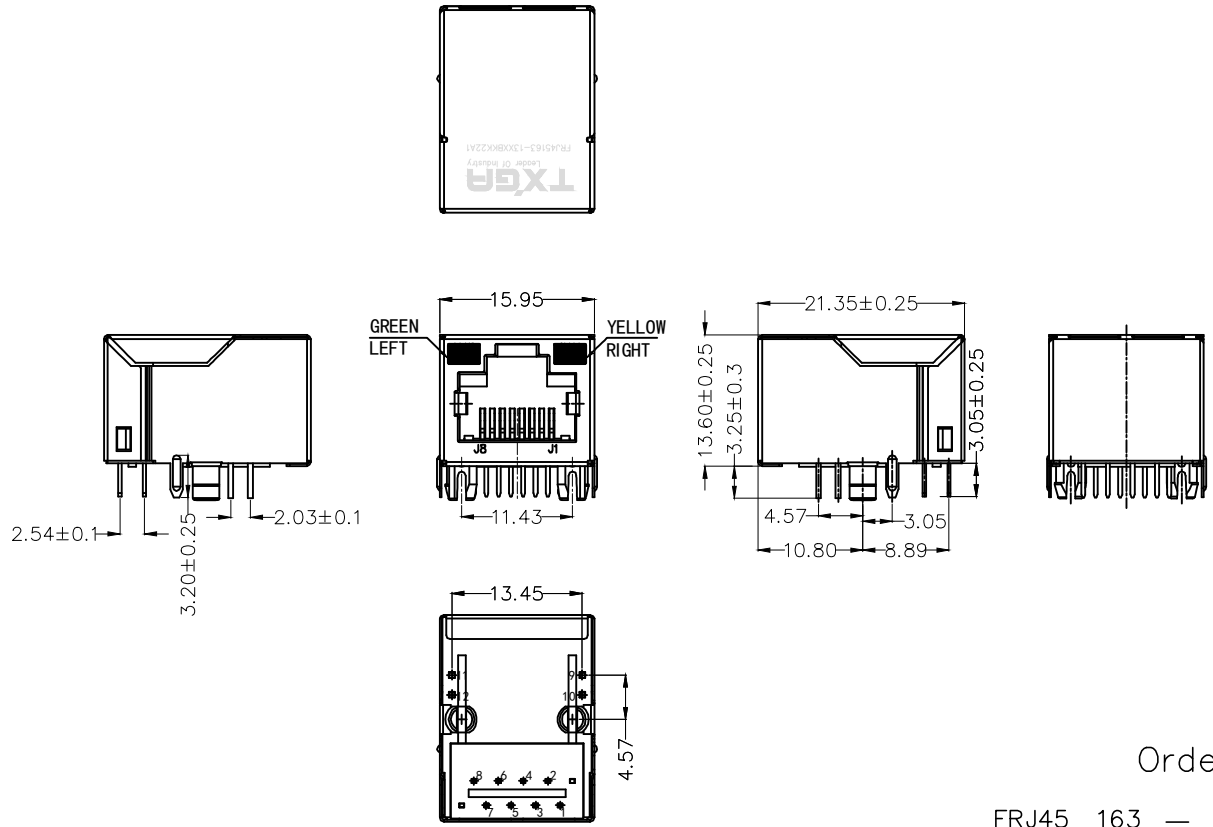


REV	LOCATIONS	DESCRIPTION	DATE	REVISER	APPD

SPECIFICATIONS

Electrical Performances
 Current Rating: 1.5A AC(rms)/DC
 Voltage Rating: 125V AC(rms)/DC
 Contact Resistance: 30 mΩ Max
 Insulation Resistance: 500 MΩ MIN
 Withstanding Voltage: 1000V AC r.m.s
 Temperature Range-Operating: -40°C~+85°C
 Material and Plating
 Housing: PBT UL94V-0
 Contact: Phosphor Bronze/ Gold Plated
 Shell: Brass/ Nickel Plated



Ordering Information

FRJ45 163 - 1 3 XX BK K 2 2 A 1
 2 3 4 5 6 7 8 9 10 11

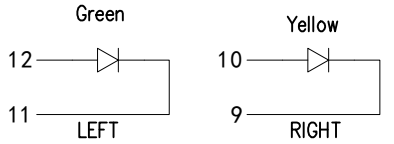
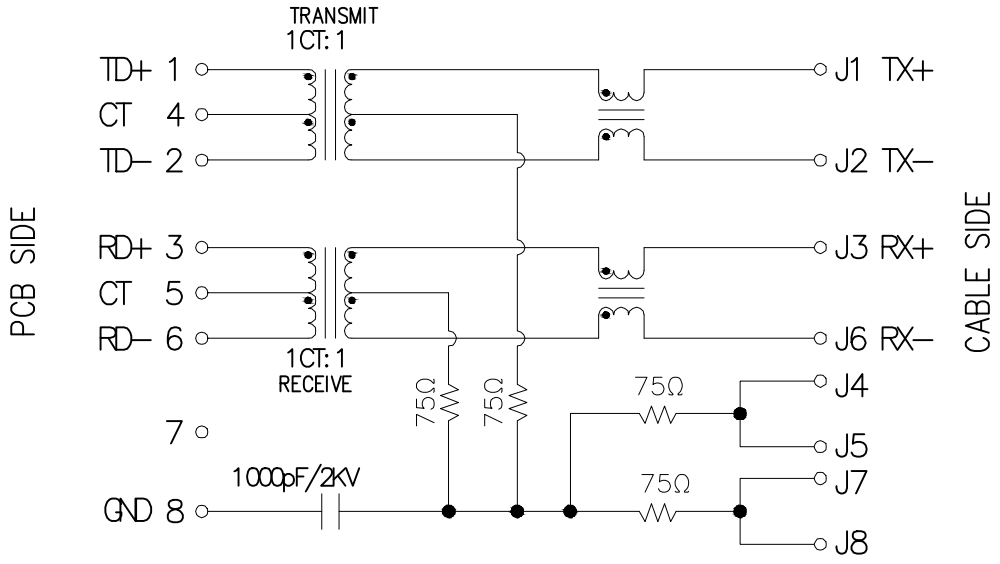
1 Category FRJ45-RJ45 Connector	2 Distinction No. 163	3 Ports options 1-1 Port	4 Plating 3-Selective gold in contact area, tin on tail	5 Thickness of plating 00-Gold flash 06-6μ" Custom plate available
6 Color-Resin BK-Black	7 Packaging K-Tray	8 LED style 2-L: Green R: yellow	9 Contact type 2-Square pin	10 Distinction type A-With Filter
11 Pin circuits 2-100Base-T				

<p>THIRD ANGLE PROJECTION</p>	GENERAL TOLERANCES (UNLESS SPECIFIED) X. ±0.30 X.* ±5° X.X ±0.20 X.X* ±2° X.XX ±0.15 X.XX* ±1° X.XXX ±0.10 X.XXX* ±0.5°		APPROVE BY FRANK DATE 11/JUN/20	PART NO. FRJ45163-13XXBKK22A1 TITLE RJ45 Connector 10P8C 90° Angle (100Base-T)	ITEM NO. FRJ45163	<p>Leader Of Industry</p>
	DESIGN UNITS Metric	SCALE 5:1	SIZE A4	CHECKED BY KATE DATE 11/JUN/20	DRAWN BY CHERRY DATE 11/JUN/20	

REV	LOCATIONS	DESCRIPTION	DATE	REVISER	APPD

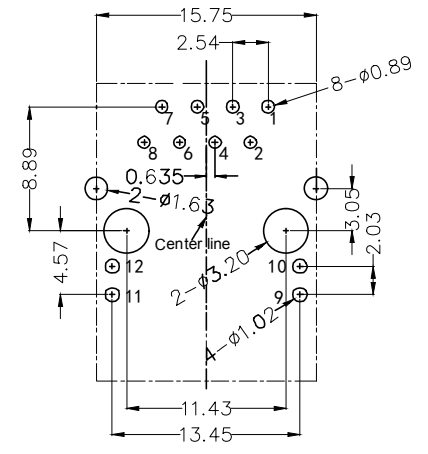
Electrical Specifications

- Turn ratio: 1~2: J1~J2=1CT:1CT(±2%)
3~6: J3~J6=1CT:1CT(±2%)
- OCL: 350uH Min. @ 100KHz 100mV 8mA DC.
- Insertion loss: -1.0dB Max.@ 1MHz~100MHz
- Return loss: -20dB Min. @ 1MHz~10MHz;
-16dB Min. @ 10MHz~30MHz;
-12dB Min. @ 30MHz~60MHz;
-10dB Min. @ 60MHz~80MHz;
- Cross talk: -40dB Min. @ 1MHz~30MHz;
-35dB Min. @ 30MHz~60MHz;
-30dB Min. @ 60MHz~100MHz;
- CMR: -30dB Min. @ 1MHz~100MHz;
- Hi-Pot: 1500V AC&2250V DC 6S 1mA PRI TO SEC.



LED Specification

Standard LED Color	LED Wavelength	Foward(A)	Foward(V)
Green	568nm	20mA	1.85-2.45V
Yellow	585nm	20mA	1.7-2.2V



Recommended P.C.Board Layout
Tolerances: ±0.05

 THIRD ANGLE PROJECTION	GENERAL TOLERANCES (UNLESS SPECIFIED)		APPROVE BY	DATE	PART NO.	ITEM NO.	 Leader Of Industry
	X. ±0.30	X.* ±5°	FRANK	11/JUN/20	FRJ45163-13XXBKK22A1	FRJ45163	
	X.X ±0.20	X.X* ±2°	CHECKED BY	DATE	TITLE		
	X.XX ±0.15	X.XX* ±1°	KATE	11/JUN/20	RJ45 Connector 10P8C 90° Angle (100Base-T)		
SCALE	SIZE	X.XXX ±0.10	X.XXX* ±0.5°	DRAWN BY	DATE	THIS DRAWING CONTAINS INFORMATION THAT IS PROPRIETARY TO TXGA INDUSTRIAL ELECTRONICS(S.Z)CO.,LTD AND SHOULD NOT BE USED WITHOUT WRITTEN PERMISSION	
5:1	A4			CHERRY	11/JUN/20	REV 0	SHEET NO. 2/2