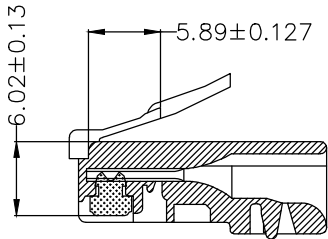
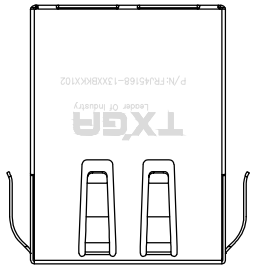


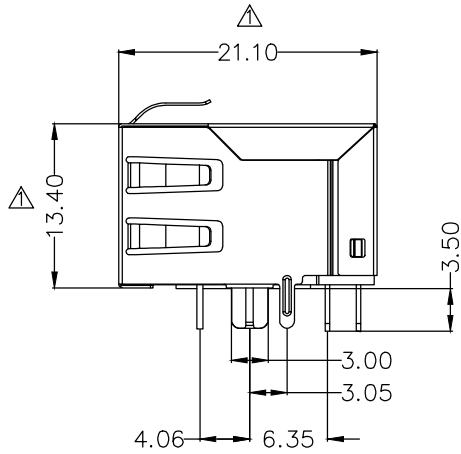
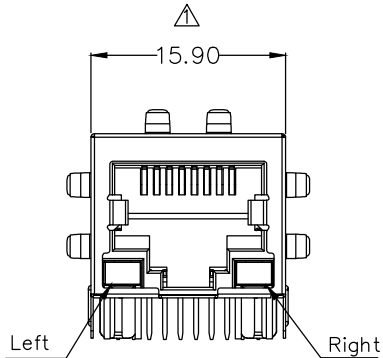
REV	LOCATIONS	DESCRIPTION	DATE	REVISER	APPD
1	△	Modify dimensions and replace the PCB drawing	30/Mar/26	HJP	CHERRY



Recommended plug dimension

SPECIFICATIONS

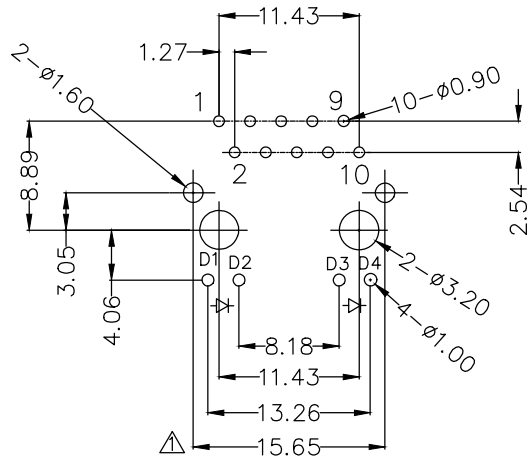
Electrical
 Current Rating: 1.5A AC(rms)/DC
 Voltage Rating: 125V AC(rms)/DC
 Contact Resistance: 40 mΩ Max
 Insulation Resistance: 500 MΩ Min / DC 500V
 Withstanding Voltage: 1000V AC r.m.s
 △ Operating Temperature: 0°C~+70°C
 Storage Temperature: -40°C~+85°C
 Material and plating
 Housing: PBT (UL 94V-0), Black
 Contact: Phosphor Bronze/ Selective gold on contact area and bright tin on tails area
 Shell: Copper alloy/ Nickel plated



Ordering Information

FRJ45 168 - 1 3 XX BK K X 1 0 2
 1 2 3 4 5 6 7 8 9 10

1 Category FRJ45-RJ45 Connector	2 Distinction No. 168	3 Ports options 1-1 Port	4 Plating 3-Selective gold on contact area, bright tin on tail	5 Thickness of plating 00-Gold flash 06-6μ" Custom plate available
6 Color-Resin BK-Black	7 Packaging K-Tray	8 LED style 1-L: Yellow R: Green 2-L: Green R: Yellow	9 Contact type 1-Square pin	10 Pin circuits 2-1000Base-T



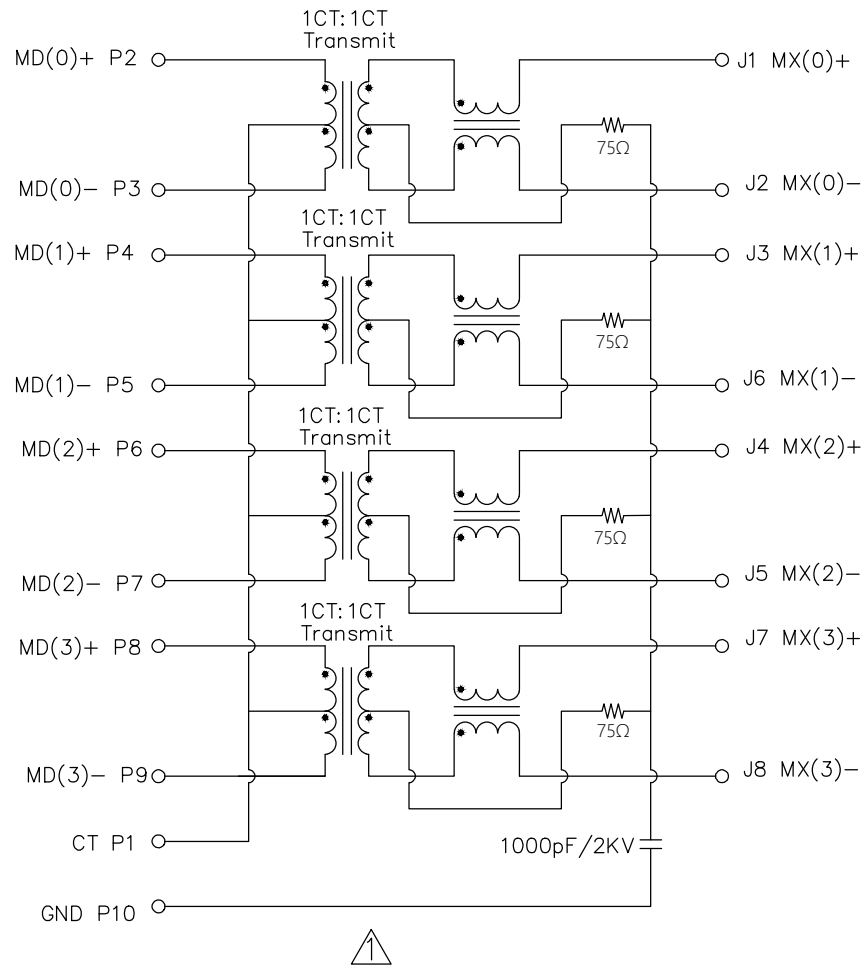
Recommended P.C.Board Layout
 General tolerances:±0.05

<p>THIRD ANGLE PROJECTION</p>	GENERAL TOLERANCES (UNLESS SPECIFIED)		APPROVE BY LEO	DATE 19/Sept/23	PART NO. FRJ45168-13XXBKKX102	ITEM NO. FRJ45168	<p>Building Technology Cornerstone</p>
	X. ±0.30	X.' ±5'	CHECKED BY GISELLE	DATE 19/Sept/23	TITLE RJ45 Connector 10P8C 90° Angle (1000Base-T)		
DESIGN UNITS METRIC(mm)	X.X ±0.20	X.X' ±2'	DRAWN BY Hejianpeng	DATE 19/Sept/23	THIS DRAWING CONTAINS INFORMATION THAT IS PROPRIETARY TO TXGA INDUSTRIAL ELECTRONICS(S,Z)CO.,LTD AND SHOULD NOT BE USED WITHOUT WRITTEN PERMISSION		
SCALE 5:1	SIZE A4	X.XX ±0.15	X.XX' ±1'				
		X.XXX ±0.10	X.XXX' ±0.5'				

REV	LOCATIONS	DESCRIPTION	DATE	REVISER	APPD

A
B
C
D
E
F

PCB Side to PHY



Cable Side

Electrical;
 Turn ratio: (25±5°C)
 TR: (100KHz, 0.1V) Input to output=1:1±3%
 LX: 350uH Min.at 100KHz 100mV 8mA DC.
 DCR: 1.2 OHMS Max
 Insertion Loss: -0.8 dB Max 0.3~100MHz.
 -1.2 dB Max 100~125MHz.
 Return loss: -20dB Min 1~30MHz;
 -16dB Min 30~60MHz.
 -12dB Min 60~100MHz.
 Cross talk: -40dB Min 1~30MHz;
 -35dB Min 30~60MHz;
 -30dB Min 60~100MHz;
 CMR: -30dB Min 1~100MHz;
 Hi-Pot: 1500V AC 6S 1mA PRI TO SEC



A
B
C
D
E
F

<p>THIRD ANGLE PROJECTION</p>	GENERAL TOLERANCES (UNLESS SPECIFIED)		APPROVE BY LEO	DATE 19/Sept/23	PART NO. FRJ45168-13XXBKKX102	ITEM NO. FRJ45168	<p>Building Technology Cornerstone</p>	
	X. ±0.30	X.* ±5°	CHECKED BY GISELLE	DATE 19/Sept/23	TITLE RJ45 Connector 10P8C 90° Angle (1000Base-T)			REV 0
	DESIGN UNITS METRIC(mm)	X.X ±0.20	X.X* ±2°	DRAWN BY Hejianpeng	DATE 19/Sept/23	THIS DRAWING CONTAINS INFORMATION THAT IS PROPRIETARY TO TXGA INDUSTRIAL ELECTRONICS(S.Z)CO.,LTD AND SHOULD NOT BE USED WITHOUT WRITTEN PERMISSION		SHEET NO. 2/2
	SCALE 5:1	SIZE A4	X.XX ±0.15	X.XX* ±1°	X.XXX ±0.10	X.XXX* ±0.5°		