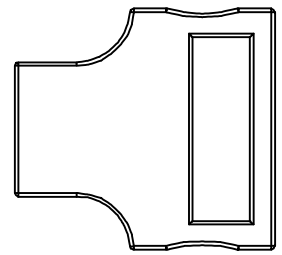
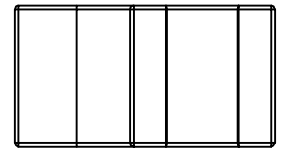
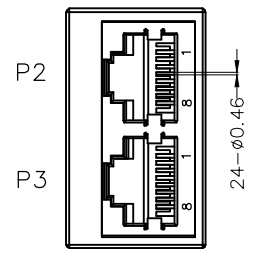
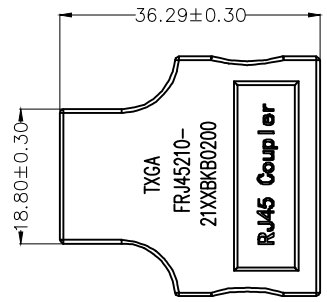
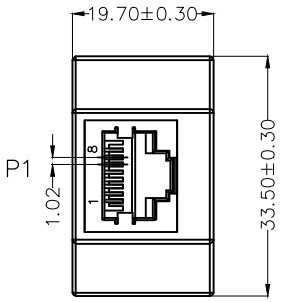


REV	LOCATIONS	DESCRIPTION	DATE	REVISER	APPD

SPECIFICATIONS

Electrical Performances
 Current Rating:1.5A AC(rms)/DC
 Voltage Rating:125V AC(rms)/DC
 Contact Resistance:30 mΩ Max
 Insulation Resistance:500 MΩ MIN
 Withstanding Voltage:1000V AC r.m.s
 Mechanical Performances
 Durability:750 Cycles Min.
 Environmental Characteristics
 Temperature Range-Operating: -40°C~+85°C

Material and Plating
 Housing: PBT UL 94V-0, Black
 Contact: Phosphor Bronze/Gold Plated
 SR: PVC 45P, Black



Ordering Information

FRJ45 210 — 2 1 XX BK B 0 2 0 0
 1 2 3 4 5 6 7 8

1 Category FRJ45-RJ45 Connector	2 Distinction No. 210	3 Ports options 2-2 Port	4 Plating 1-Gold Plated
5 Thickness of plating 00-Gold flash 03-3μ" Custom plate available	6 Color-Resin BK-Black	7 Packaging B-Bag	8 Contact type 2-Round pin

SCHEMATIC

P1	P2	P3
1	1	1
2	2	2
3	3	3
4	4	4
5	5	5
6	6	6
7	7	7
8	8	8

 THIRD ANGLE PROJECTION	GENERAL TOLERANCES (UNLESS SPECIFIED)		APPROVE BY LEO	DATE 30/JAN/23	PART NO. FRJ45210-21XXBKB0200	ITEM NO. FRJ45210	 Building Technology Cornerstone
	X. ±0.30	X.* ±5°	CHECKED BY GISELLE	DATE 30/JAN/23	TITLE RJ45 Connector Adapter,Vertical(180°)		
DESIGN UNITS METRIC(mm)	X.X ±0.20	X.X* ±2°	DRAWN BY MATT	DATE 30/JAN/23	THIS DRAWING CONTAINS INFORMATION THAT IS PROPRIETARY TO TXGA INDUSTRIAL ELECTRONICS(S.Z)CO.,LTD AND SHOULD NOT BE USED WITHOUT WRITTEN PERMISSION		
SCALE 5:1	SIZE A4	X.XX ±0.15	X.XX* ±1°				
		X.XXX ±0.10	X.XXX* ±0.5°				