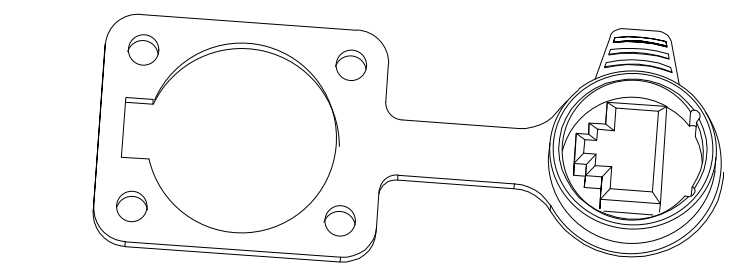
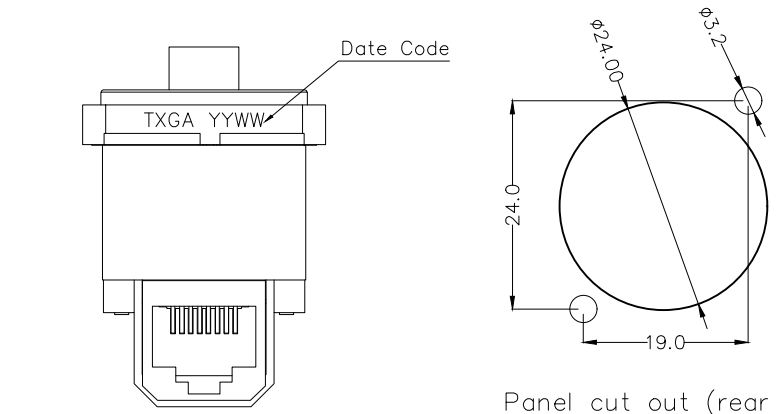
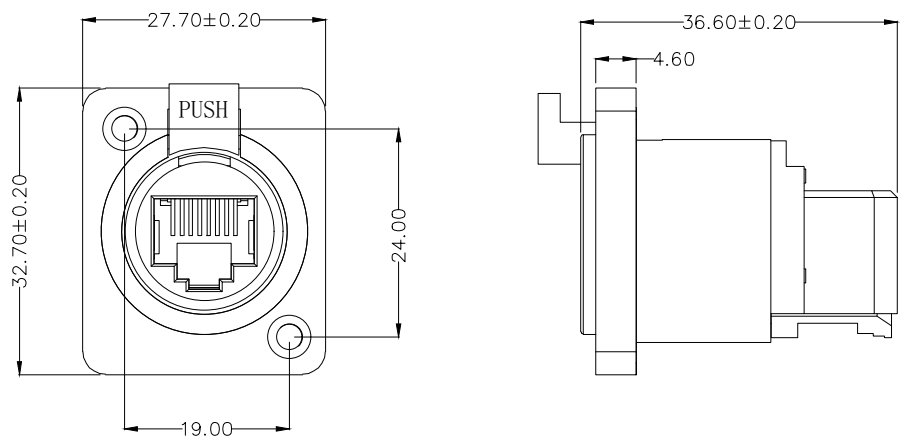


REV	LOCATIONS	DESCRIPTION	DATE	REVISER	APPD



**SPECIFICATION**

**Electrical**  
 Current Rating: 1.5A AC(rms)/DC  
 Voltage Rating: 50V AC(rms)/DC  
 Contact Resistance: 10 mΩ Max  
 Insulation Resistance: 500 MΩ MIN  
 Withstanding Voltage: 1000V AC r.m.s  
 Temperature Range—Operating: -30°C~+80°C  
 Frequency Range: 1-100MHz  
 IP Rating: IP65

**Material**  
 Housing: PA66, (UL 94V-0)  
 Back cover: PA66, (UL 94V-0)  
 Terminal: Phosphor Bronze/Gold plated  
 Metal Panel: Zinc Alloy/Nickel plating  
 Handle: SUS/Nickel plating  
 Spring steel: Mn Steel/Nickel plating  
 Straight core: Copper Alloy  
 Dust Cap: Silicone (50%)  
 Inner lining: Silicone (50%)

**Ordering Information**

FRJ45 225 - 1 1 XX BK K 0 2 0 0  
 1 2 3 4 5 6 7 8

1	Category	2	Distinction No.	3	Ports options	4	Plating
	FRJ45-RJ45 Connector		225		1-1 Ports		1-Gold plated
5	thickness of Gold Plating	6	Color-Resin	7	Packaging	8	Contact type
	01-1u"		BK-Black		K-Tray		2-Square pin

 THIRD ANGLE PROJECTION	GENERAL TOLERANCES (UNLESS SPECIFIED)		APPROVE BY	DATE	PART NO.	ITEM NO.	 Building Technology Cornerstone
	X. ±0.30	X.* ±5°	LEO	19/Sept/23			
DESIGN UNITS METRIC(mm)	X.X ±0.20	X.X* ±2°	CHECKED BY	DATE	TITLE		REV 0
SCALE	X.XX ±0.15	X.XX* ±1°			RJ45 Connector-Adapter 8P8C Angle(90°)		
SIZE	X.XXX ±0.10	X.XXX* ±0.5°	DRAWN BY	DATE	THIS DRAWING CONTAINS INFORMATION THAT IS PROPRIETARY TO TXGA INDUSTRIAL ELECTRONICS(S,Z)CO.,LTD AND SHOULD NOT BE USED WITHOUT WRITTEN PERMISSION		
5:1	A4		Hejianpeng	19/Sept/23			

Soft rubber accessories