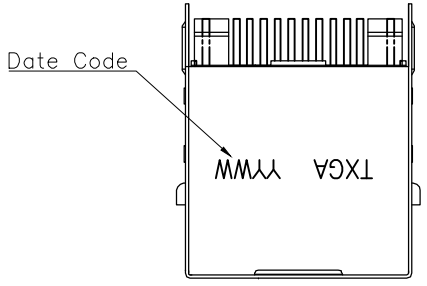
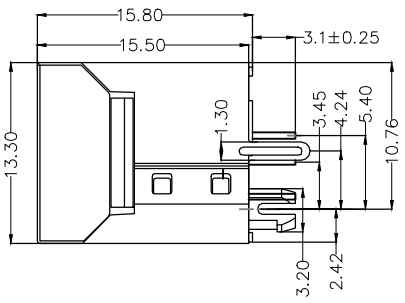
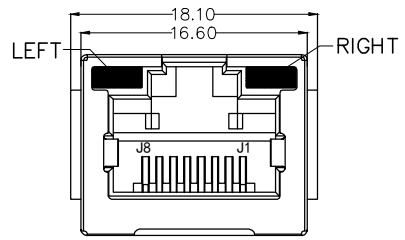


REV	LOCATIONS	DESCRIPTION	DATE	REVISER	APPD



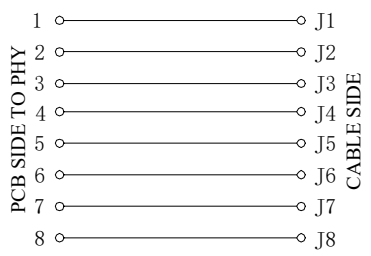
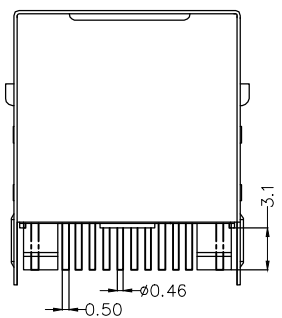
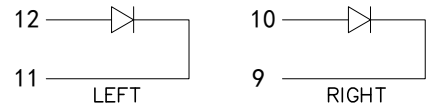
SPECIFICATIONS
Electrical
 Current Rating: 1.5A AC(rms)/DC
 Voltage Rating: 125V AC(rms)/DC
 Contact Resistance: 30 mΩ Max
 Insulation Resistance: 500 MΩ Min
 Withstanding Voltage: 1000V AC r.m.s
 Operating Temperature: -40°C~+85°C
 Durability: 750 Cycles Min.
 Mating Force: 2.2N MAX.
 Retention Strength : 7.7N MAX
 (BETWEEN JACK AND PLUG)



Material and plating
 Housing: PBT (UL 94V-0), Black
 Contacts: Phosphor Bronze/ Gold plated
 Shell: Brass(C2680)/Nickel Plated

LED Specification

Standard LED Color	LED Wavelength	Foward(A)	Foward(V)
Green	568nm	20mA	1.85~2.45V
Yellow	585nm	20mA	1.7~2.2V

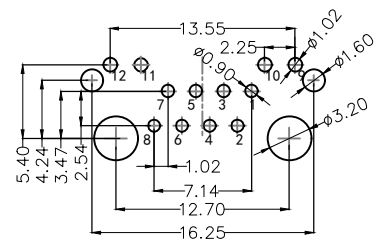


Ordering Information

FRJ45 237 - 1 1 XX BK K X 2 0 0
 1 2 3 4 5 6 7 8 9

1 Category FRJ45-RJ45 Connector 2 Distinction No. 237 3 Ports options 1-1 Port 4 Plating 1-Gold plated

5 Thickness of plating 00-Gold flash 03-3μ" Custom plate available 6 Color-Resin BK-Black 7 Packaging K-Tray 8 LED style 1-L: Yellow R: Green 8 Contact type 2-Round pin



Recommended P.C.Board Layout
 General tolerances ±0.05mm

 THIRD ANGLE PROJECTION	GENERAL TOLERANCES (UNLESS SPECIFIED) X.X ±0.35 X.* ±3' X.X ±0.30 X.X* ±2' X.XX ±0.25 X.XX* ±1.5' X.XXX ±0.10 X.XXX* ±1.0'		APPROVE BY LEO	DATE 15/OCT/24	PART NO. FRJ45237-11XBKX200	ITEM NO. FRJ45237	 Building Technology Cornerstone
	DESIGN UNITS METRIC(mm)	CHECKED BY GISELLE	DATE 15/OCT/24	TITLE RJ45 Connector 8P8C 180° Vertical DIP		REV 0	
SCALE 3:1	SIZE A4	DRAWN BY NICK	DATE 15/OCT/24	THIS DRAWING CONTAINS INFORMATION THAT IS PROPRIETARY TO TXGA INDUSTRIAL ELECTRONICS(S.Z)CO.,LTD AND SHOULD NOT BE USED WITHOUT WRITTEN PERMISSION			