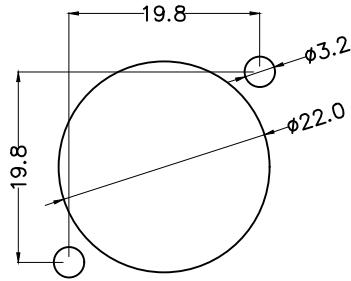
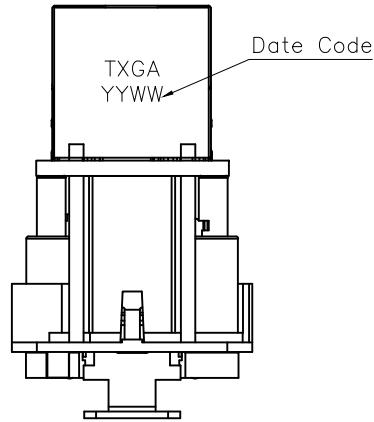
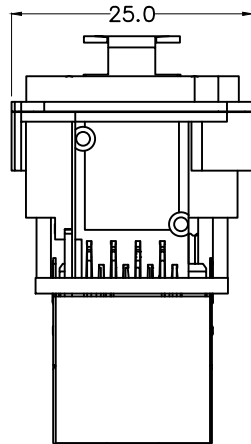
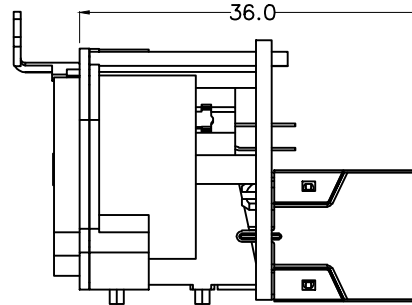
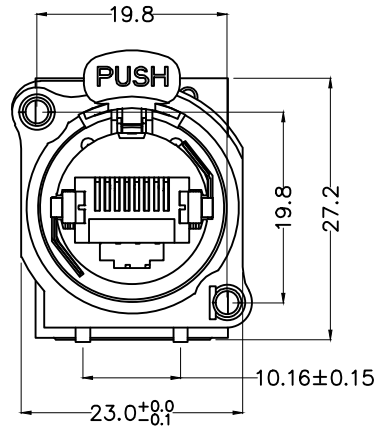


Round Panel

REV	LOCATIONS	DESCRIPTION	DATE	REVISER	APPD



Panel cut out (rear side)



SPECIFICATION

Electrical

Current Rating: 1.5A AC(rms)/DC  
 Voltage Rating: 125V AC(rms)/DC  
 Contact Resistance: 30 mΩ Max  
 Insulation Resistance: 500 MΩ MIN  
 Withstanding Voltage: 500V AC r.m.s  
 Temperature Range—Operating: -40°C~+85°C

Material

Housing: PA66, (UL 94V-0)  
 Metal Panel: Zinc Alloy/Nickel plating (Round Panel)  
 Zinc Alloy/Nickel plating (Square Panel)  
 Back cover: LCP, (UL 94V-0)  
 Terminal: Phosphor bronze/Selective gold plated on contact area and matte tin plated on tails area  
 Press handle: SUS/Nickel plating  
 Shrapnel: Mn Steel/Nickel plating  
 Internal contact spring: Copper alloy/Metal Insert  
 Shield Cover: Copper alloy/Nickel plating

Ordering Information

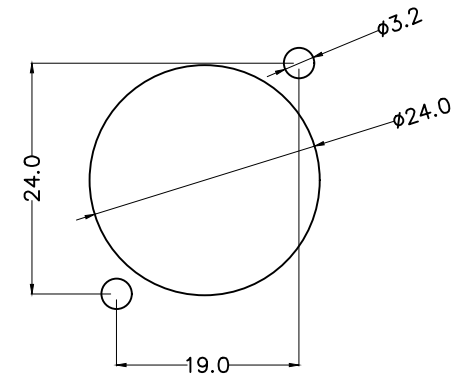
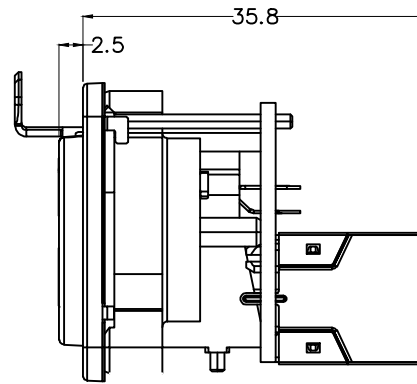
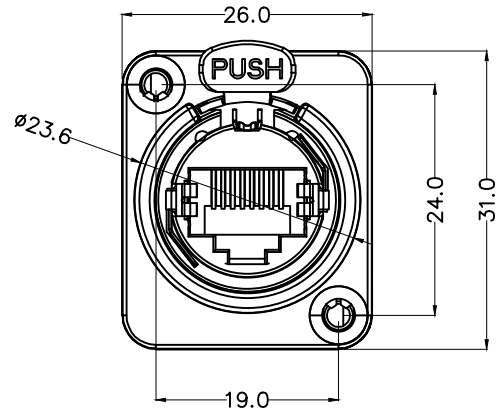
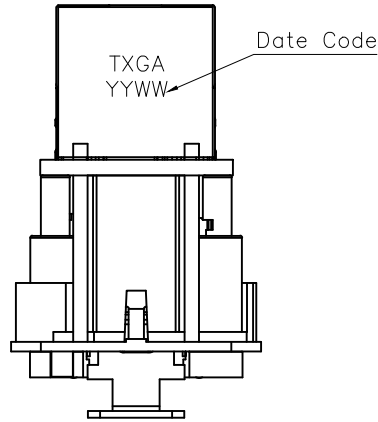
FRJ45 241 — 1 7 XX BK B 0 1 X 0  
 1 2 3 4 5 6 7 8 9

1	Category FRJ45-RJ45 Connector	2	Distinction No. 241	3	Ports options 1-1 Ports	4	Plating 7-Selective gold plated on contact area and matte tin plated on tails area
5	thickness of Gold Plating 01-1u"	6	Color-Resin BK-Black	7	Packaging B-PE Bag	8	Contact type 1-Square pin
						9	Style 1-Round Panel 2-Square Panel

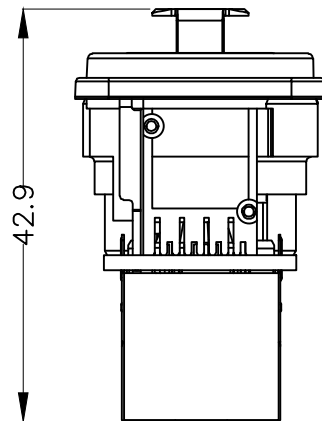
<p>THIRD ANGLE PROJECTION</p>	GENERAL TOLERANCES (UNLESS SPECIFIED)		APPROVE BY LEO	DATE 19/Sept/23	PART NO. FRJ45241-17XXBKB01X0	ITEM NO. FRJ45241	<p>Building Technology Cornerstone</p>
	X. ±0.30	X.* ±5°	CHECKED BY GISELLE	DATE 19/Sept/23	TITLE RJ45 Connector-Adapter 8P8C 180°Vertical Locked		
DESIGN UNITS METRIC(mm)	X.X ±0.20	X.X* ±2°	DRAWN BY Hejianpeng	DATE 19/Sept/23	THIS DRAWING CONTAINS INFORMATION THAT IS PROPRIETARY TO TXGA INDUSTRIAL ELECTRONICS(S.Z)CO.,LTD AND SHOULD NOT BE USED WITHOUT WRITTEN PERMISSION		
SCALE 5:1	SIZE A4	X.XX ±0.15					
		X.XXX ±0.10					

Square panel

REV	LOCATIONS	DESCRIPTION	DATE	REVISER	APPD



Panel cut out (rear side)



<p>THIRD ANGLE PROJECTION</p>	<p>GENERAL TOLERANCES (UNLESS SPECIFIED)</p>		<p>APPROVE BY</p> <p>LEO</p>	<p>DATE</p> <p>19/Sept/23</p>	<p>PART NO.</p> <p>FRJ45241-17XXBKB01X0</p>	<p>ITEM NO.</p> <p>FRJ45241</p>	<p>Building Technology Cornerstone</p>
	<p>X. ±0.30</p>	<p>X.* ±5°</p>	<p>CHECKED BY</p> <p>GISELLE</p>	<p>DATE</p> <p>19/Sept/23</p>	<p>TITLE</p> <p>RJ45 Connector-Adapter 8P8C 180°Vertical Locked</p>		
<p>DESIGN UNITS</p> <p>METRIC(mm)</p>	<p>X.X ±0.20</p>	<p>X.X* ±2°</p>	<p>DRAWN BY</p> <p>Hejianpeng</p>	<p>DATE</p> <p>19/Sept/23</p>	<p>THIS DRAWING CONTAINS INFORMATION THAT IS PROPRIETARY TO TXGA INDUSTRIAL ELECTRONICS(S.Z)CO.,LTD AND SHOULD NOT BE USED WITHOUT WRITTEN PERMISSION</p>		
<p>SCALE</p> <p>5:1</p>	<p>SIZE</p> <p>A4</p>	<p>X.XX ±0.15</p>	<p>X.XX* ±1°</p>	<p>X.XXX ±0.10</p>	<p>X.XXX* ±0.5°</p>		