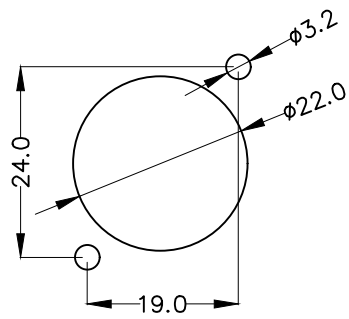
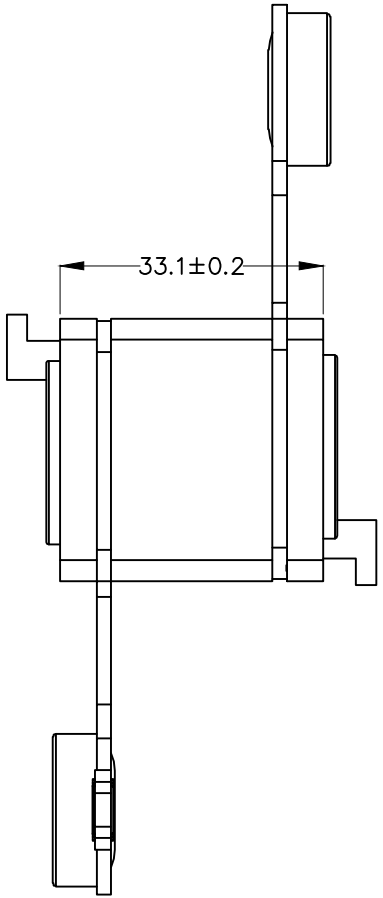
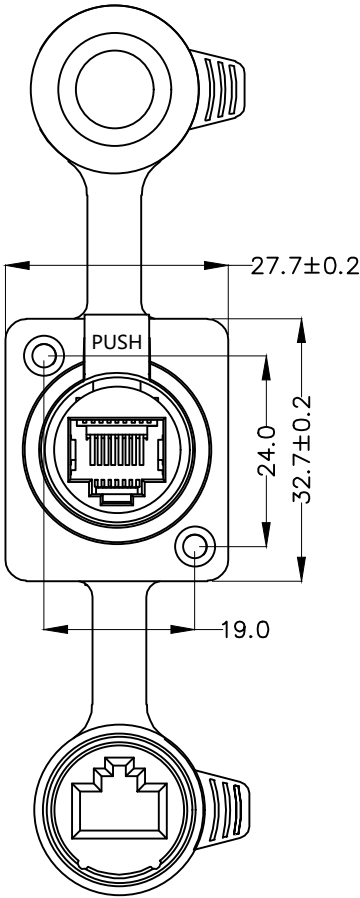


1 2 3 4 5 6 7 8

REV	LOCATIONS	DESCRIPTION	DATE	REVISER	APPD



Panel cut out (rear side)

SPECIFICATION

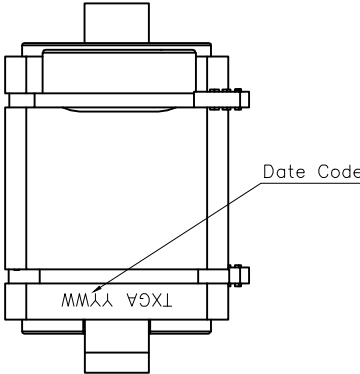
Electrical
 Current Rating: 1.5A AC(rms)/DC
 Voltage Rating: 50V AC(rms)/DC
 Contact Resistance: 10 mΩ Max
 Insulation Resistance: 500 MΩ MIN
 Withstanding Voltage: 1000V AC r.m.s
 Temperature Range-Operating: -40°C~+80°C
 Frequency Range: 1-100MHz
 IP Rating: IP65

Material
 Housing: PBTP 15%GR, (UL 94V-0)
 internal core: PBTP 15%GR, (UL 94V-0)
 Terminal: Bronze/Selective gold plated on contact area and matte tin plated on tails area
 Metal Panel: Zinc Alloy/Nickel plating
 Handle: SUS/Nickel plating
 Spring steel: Mn Steel/Nickel plating
 Dust Cap: Silicone (50%)

Ordering Information

FRJ45 242 - 1 7 XX BK B 0 1 0 0
 1 2 3 4 5 6 7 8

1	Category FRJ45-RJ45 Connector	2	Distinction No. 242	3	Ports options 1-1 Ports	4	Plating 7-Selective gold plated on contact area and matte tin plated on tails area
5	thickness of Gold Plating 01-1u"	6	Color-Resin BK-Black	7	Packaging B-PE Bag	8	Contact type 1-Square pin



<p>THIRD ANGLE PROJECTION</p>	<p>GENERAL TOLERANCES (UNLESS SPECIFIED)</p>		<p>APPROVE BY LEO</p>	<p>DATE 19/Sept/23</p>	<p>PART NO. FRJ45242-17XXBKB0100</p>	<p>ITEM NO. FRJ45242</p>	<p>Building Technology Cornerstone</p>
	<p>DESIGN UNITS METRIC(mm)</p>	<p>X. ±0.30</p>	<p>X.* ±5°</p>	<p>CHECKED BY GISELLE</p>	<p>DATE 19/Sept/23</p>	<p>TITLE RJ45 Connector-Adapter 8P8C 180°Vertical Locked</p>	
<p>SCALE 5:1</p>	<p>SIZE A4</p>	<p>X.XX ±0.15</p>	<p>X.XX* ±1°</p>	<p>DRAWN BY Hejianpeng</p>	<p>DATE 19/Sept/23</p>	<p>THIS DRAWING CONTAINS INFORMATION THAT IS PROPRIETARY TO TXGA INDUSTRIAL ELECTRONICS(S,Z)CO.,LTD AND SHOULD NOT BE USED WITHOUT WRITTEN PERMISSION</p>	

1 2 3 4 5 6 7 8