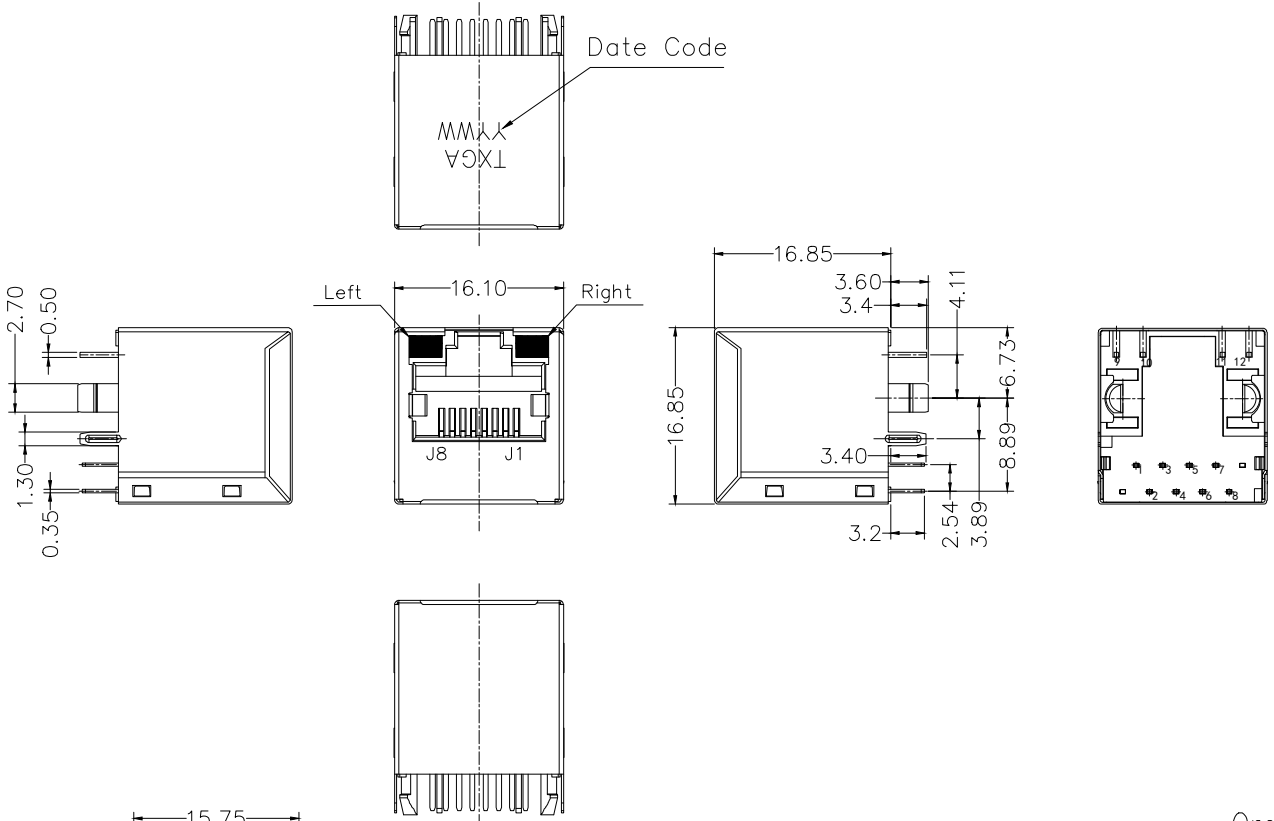


REV	LOCATIONS	DESCRIPTION	DATE	REVISER	APPD

A
B
C
D
E
F

A
B
C
D
E
F

SPECIFICATION
Electrical Performance
 Current Rating: 1.5A AC(rms)/DC
 Voltage Rating: 125V AC(rms)/DC
 Contact Resistance: 20mΩ Max
 Insulation Resistance: 500MΩ MIN
 Withstanding Voltage: 1500V AC r.m.s
 Temperature Range—Operating: -40°C~+85°C
Material and Plating
 Housing: PBT, (UL 94V-0)
 Terminals Bracket: PBT, (UL 94V-0)
 Terminal: Copper alloy/Selective gold plated on contact area and matte tin plated on tails area
 Shield: Copper alloy/Nickel plating



Ordering Information

FRJ45 246 — 1 7 XX BK K X 1 0 1
 1 2 3 4 5 6 7 8 9 10

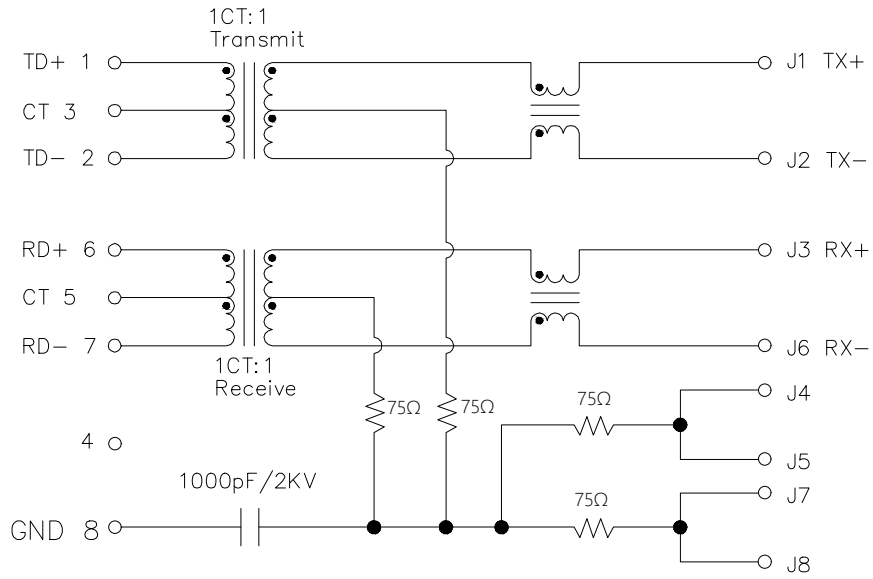
1	Category FRJ45-RJ45 Connector	2	Distinction No. 246	3	Ports options 1-1 Ports	4	Plating 7-Selective gold plated on contact area and matte tin plated on tails area	5	thickness of Gold Plating 06-6u"
6	Color-Resin BK-Black	7	Packaging K-Tray	8	LED style 1-L: Yellow R: Green 2-L: Green R: Yellow	9	Contact type 1-Square pin	10	Pin circuits 1-100Base-T

Recommended P.C.Board Layout
 General tolerances:±0.05

<p>THIRD ANGLE PROJECTION</p>	<p>GENERAL TOLERANCES (UNLESS SPECIFIED)</p>		<p>APPROVE BY LEO</p>	<p>DATE 19/Sept/23</p>	<p>PART NO. FRJ45246-17XXBKX101</p>	<p>ITEM NO. FRJ45246</p>	<p>Building Technology Cornerstone</p>
	<p>X. ±0.30</p>	<p>X.' ±5°</p>	<p>CHECKED BY GISELLE</p>	<p>DATE 19/Sept/23</p>	<p>TITLE RJ45 Connector 8P8C Vertical(180°)(100Base-T)</p>		
<p>DESIGN UNITS METRIC(mm)</p>	<p>X.X ±0.20</p>	<p>X.X' ±2°</p>	<p>DRAWN BY Hejianpeng</p>	<p>DATE 19/Sept/23</p>	<p>THIS DRAWING CONTAINS INFORMATION THAT IS PROPRIETARY TO TXGA INDUSTRIAL ELECTRONICS(S,Z)CO.,LTD AND SHOULD NOT BE USED WITHOUT WRITTEN PERMISSION</p>		
<p>SCALE 5:1</p>	<p>SIZE A4</p>	<p>X.XX ±0.15</p>	<p>X.XX' ±1°</p>	<p>X.XXX ±0.10</p>	<p>X.XXX' ±0.5°</p>		

REV	LOCATIONS	DESCRIPTION	DATE	REVISER	APPD

PCB Side to PHY

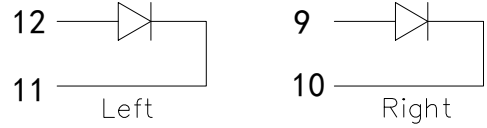


Cable Side

Electrical;
 Turn ratio: 1~2: J1~J2=1CT:1CT(±2%).
 6~7: J3~J6=1CT:1CT(±2%).
 OCL: 350uH Min.at 100KHz 100mV 8mA DC.
 Insertion Loss: -1.0 dB Max 1~100MHz.
 Return loss: -20dB Min 1~10MHz;
 -16dB Min 10~30MHz.
 -12dB Min 30~60MHz.
 -10dB Min 60~80MHz.
 Cross talk: -40dB Min 1~30MHz;
 -35dB Min 30~60MHz;
 -30dB Min 60~100MHz;
 CMR: -30dB Min 1~100MHz;
 Hi-Pot: 1500V AC&2250V DC 6S 1mA PRI TO SEC

LED Specification

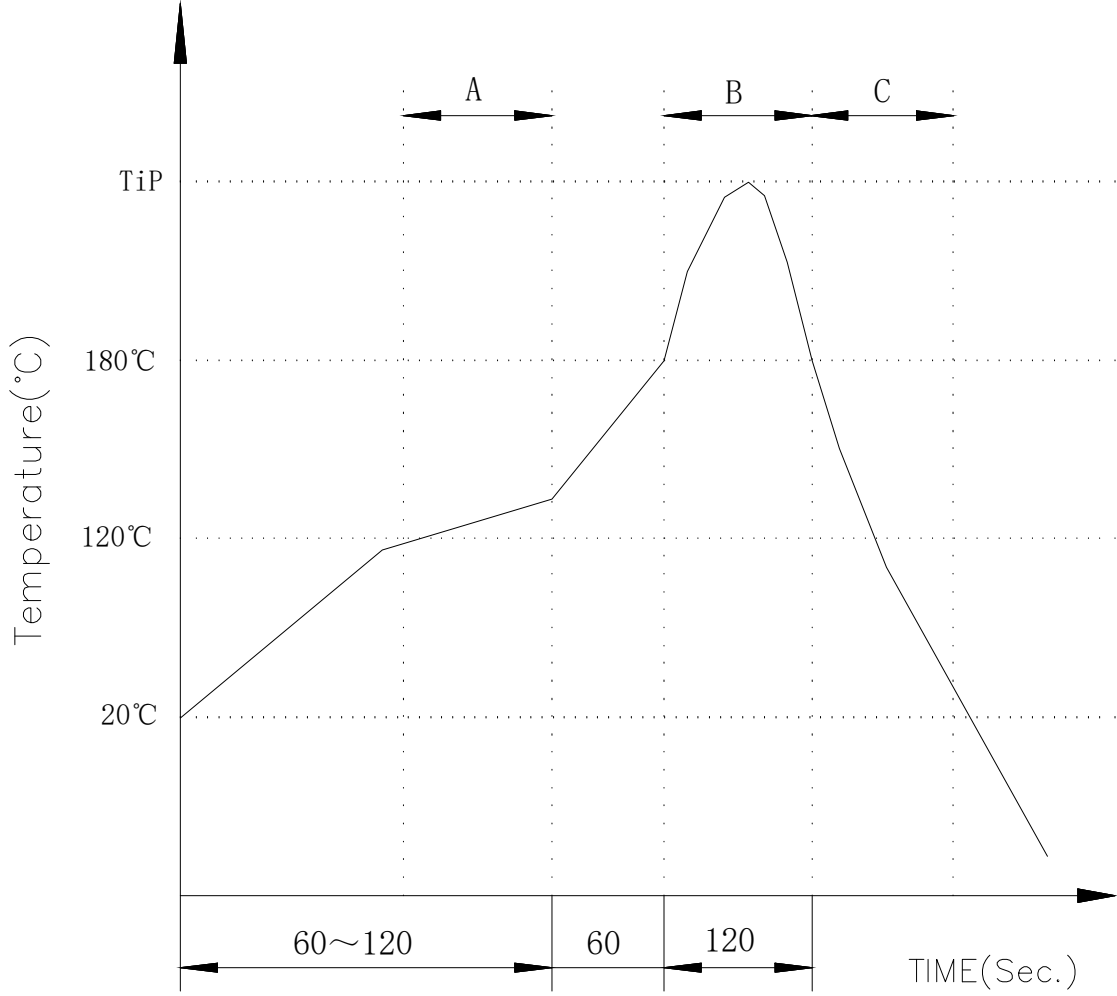
Standard LED Color	LED Wavelength	Foward(A)	Foward(V)
Green	568nm	20mA	1.85-2.45V
Yellow	585nm	20mA	1.7-2.2V



<p>THIRD ANGLE PROJECTION</p>	GENERAL TOLERANCES (UNLESS SPECIFIED)		APPROVE BY LEO	DATE 19/Sept/23	PART NO. FRJ45246-17XXBKX101	ITEM NO. FRJ45246	<p>Building Technology Cornerstone</p>	
	DESIGN UNITS METRIC(mm)	X. ±0.30 X.X ±0.20 X.XX ±0.15 X.XXX ±0.10	X.* ±5° X.X* ±2° X.XX* ±1° X.XXX* ±0.5°	CHECKED BY GISELLE	DATE 19/Sept/23	TITLE RJ45 Connector 8P8C Vertical(180°)(100Base-T)		REV 0
SCALE 5:1	SIZE A4	DRAWN BY Hejianpeng		DATE 19/Sept/23	THIS DRAWING CONTAINS INFORMATION THAT IS PROPRIETARY TO TXGA INDUSTRIAL ELECTRONICS(S.Z)CO.,LTD AND SHOULD NOT BE USED WITHOUT WRITTEN PERMISSION			

REV	LOCATIONS	DESCRIPTION	DATE	REVISER	APPD

PROFILE OF WAVE SOLDER



A.Preheating B.Soldering C.Gradual Cooling

Tip temperature: 260±5°C.

Tip temperature time: 5Sec Max.

Tip melting point of Sn96.5/Ag3/Cu0.5: 217°C.

Remarks: after wave soldering, the plastic positioning columns of the product which under the PCB will be slightly melted, but it won't affect its function.

<p>THIRD ANGLE PROJECTION</p>	GENERAL TOLERANCES (UNLESS SPECIFIED)		APPROVE BY LEO	DATE 19/Sept/23	PART NO. FRJ45246-17XXBKKX101	ITEM NO. FRJ45246	<p>Building Technology Cornerstone</p>	
	X. ±0.30	X.* ±5°	CHECKED BY GISELLE	DATE 19/Sept/23	TITLE RJ45 Connector 8P8C Vertical(180°)(100Base-T)			
DESIGN UNITS METRIC(mm)	X.X ±0.20	X.X* ±2°	DRAWN BY Hejianpeng	DATE 19/Sept/23	THIS DRAWING CONTAINS INFORMATION THAT IS PROPRIETARY TO TXGA INDUSTRIAL ELECTRONICS(S.Z)CO.,LTD AND SHOULD NOT BE USED WITHOUT WRITTEN PERMISSION		REV 0	SHEET NO. 3/3
SCALE 5:1	X.XX ±0.15	X.XX* ±1°						
	X.XXX ±0.10	X.XXX* ±0.5°						