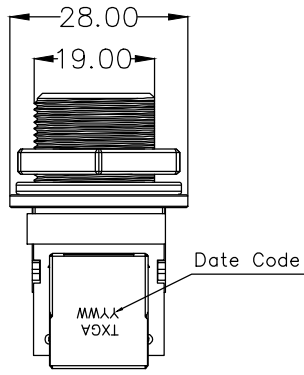
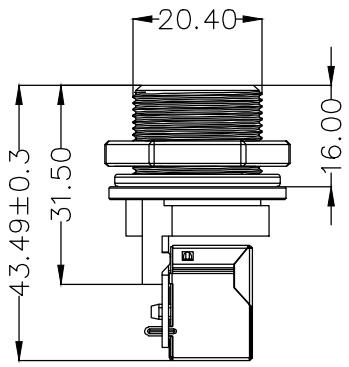
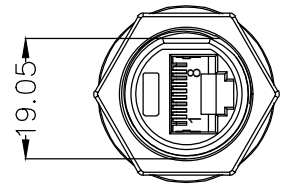


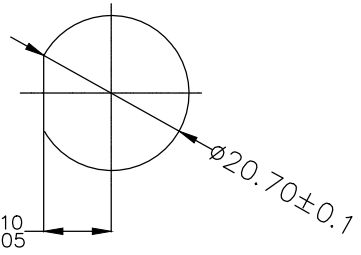
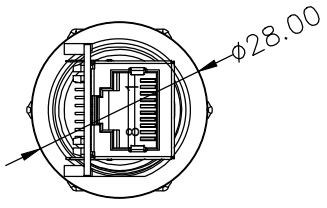
REV	LOCATIONS	DESCRIPTION	DATE	REVISER	APPD



P1	P2
1	1
2	2
3	3
4	4
5	5
6	6
7	7
8	8
S	S

Wire Diagram

**SPECIFICATION**  
**Electrical Performance**  
 Current Rating: 1.5A AC(rms)/DC  
 Voltage Rating: 125V AC(rms)/DC  
 Contact Resistance: 30mΩ Max  
 Insulation Resistance: 1000MΩ MIN  
 Withstanding Voltage: 1000V AC r.m.s  
 Temperature Range—Operating: -40°C~+85°C  
 IP Rating: IP67  
**Material and Plating**  
 Housing: PA66, (UL 94V-0)  
 Terminal: Phosphor Bronze/Selective gold plated on contact area and matte tin plated on tails area.  
 Nut: PA66, (UL 94V-0)  
 Silicone O-ring: Silicone  
 Grounding Plate: SUS  
 Waterproof Pad: PE  
 RJ45: Shielded gold flash-plated female 8P8C connector with round pins and black PBT plastic housing.



Recommended Panel Cut-Out

Ordering Information

FRJ45 250 — 1 7 XX BK B 0 1 0 0  
 1 2 3 4 5 6 7 8

1	Category FRJ45-RJ45 Connector	2	Distinction No. 250	3	Ports options 1-1 Ports	4	Plating 7-Selective gold plated on contact area and matte tin plated on tails area
5	thickness of Gold Plating 06-6u"	6	Color-Resin BK-Black	7	Packaging B-PE Bag	8	Contact type 1-Square pin

<p>THIRD ANGLE PROJECTION</p>	<b>GENERAL TOLERANCES (UNLESS SPECIFIED)</b> X. ±0.30    X.* ±5* X.X ±0.20    X.X* ±2* X.XX ±0.15    X.XX* ±1* X.XXX ±0.10    X.XXX* ±0.5*		APPROVE BY LEO	DATE 19/Sept/23	PART NO. FRJ45250-17XXBK0100	ITEM NO. FRJ45250	<p><b>TXGA</b> Building Technology Cornerstone</p>
	DESIGN UNITS METRIC(mm)	SCALE 5:1	SIZE A4	CHECKED BY GISELLE	DATE 19/Sept/23	TITLE RJ45 Connector-Adapter 10P8C Vertical(180°)	
THIS DRAWING CONTAINS INFORMATION THAT IS PROPRIETARY TO TXGA INDUSTRIAL ELECTRONICS(S.Z)CO.,LTD AND SHOULD NOT BE USED WITHOUT WRITTEN PERMISSION							F