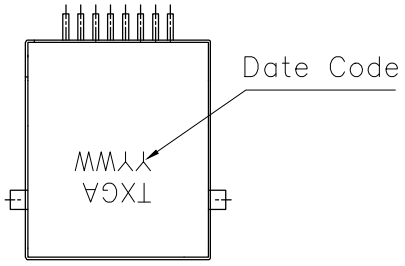
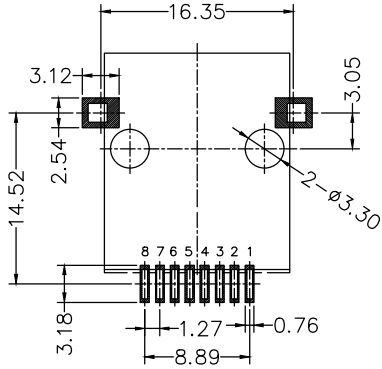
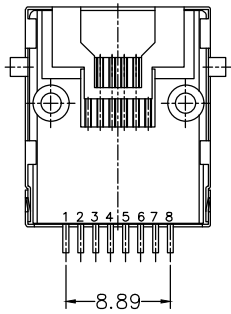
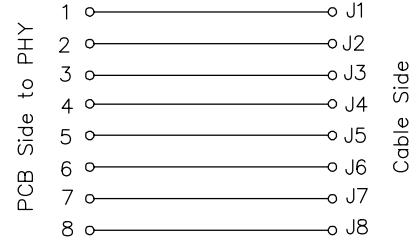
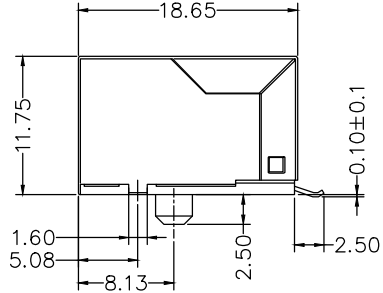
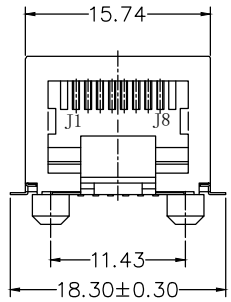


REV	LOCATIONS	DESCRIPTION	DATE	REVISER	APPD



SPECIFICATION
Electrical Performance
 Current Rating: 1.5A AC(rms)/DC
 Voltage Rating: 125V AC(rms)/DC
 Contact Resistance: 30mΩ Max
 Insulation Resistance: 500MΩ MIN
 Withstanding Voltage: 1000V AC r.m.s
 Temperature Range—Operating: -40°C~+85°C

Material and Plating
 Housing: PA9T, (UL 94V-0)
 Terminal: Phosphor Bronze/Selective gold plating on contact areas and bright tin plating on tail areas.
 Shell: Copper alloy/Nickel plating



Recommended P.C.Board Layout
 General tolerances: ±0.05

Ordering Information

FRJ45 251 — 1 3 XX BK K 0 1 0 0
 1 2 3 4 5 6 7 8

1 Category FRJ45-RJ45 Connector	2 Distinction No. 251	3 Ports options 1-1 Ports	4 Plating 3-Selective gold plating on contact areas and bright tin plating on tail areas.
5 thickness of Gold Plating 06-6u"	6 Color-Resin BK-Black	7 Packaging K-Tray	8 Contact type 1-Square pin

<p>THIRD ANGLE PROJECTION</p>	GENERAL TOLERANCES (UNLESS SPECIFIED) X. ±0.30 X.* ±5° X.X ±0.20 X.X* ±2° X.XX ±0.15 X.XX* ±1° X.XXX ±0.10 X.XXX* ±0.5°		APPROVE BY LEO	DATE 19/Sept/23	PART NO. FRJ45251-13XXBKK0100	ITEM NO. FRJ45251	<p>Building Technology Cornerstone</p>
	DESIGN UNITS METRIC(mm)	SCALE 5:1	SIZE A4	CHECKED BY GISELLE	DATE 19/Sept/23	TITLE RJ45 Connector 10P8C 90° Angle	
THIS DRAWING CONTAINS INFORMATION THAT IS PROPRIETARY TO TXGA INDUSTRIAL ELECTRONICS(S,Z)CO.,LTD AND SHOULD NOT BE USED WITHOUT WRITTEN PERMISSION							