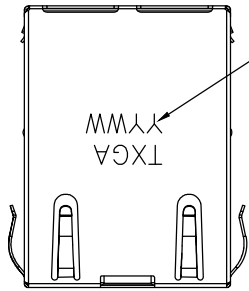
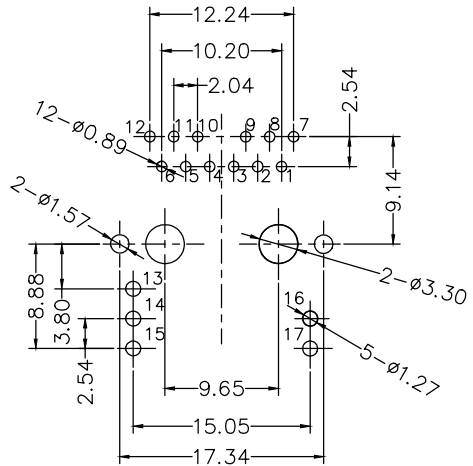


REV	LOCATIONS	DESCRIPTION	DATE	REVISER	APPD



Date Code

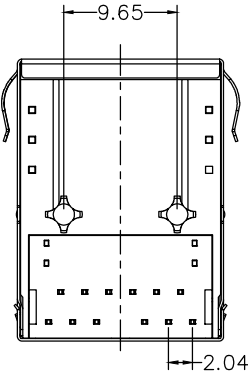
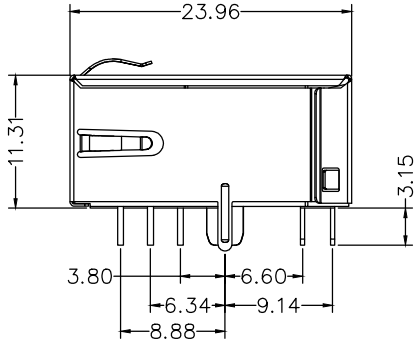
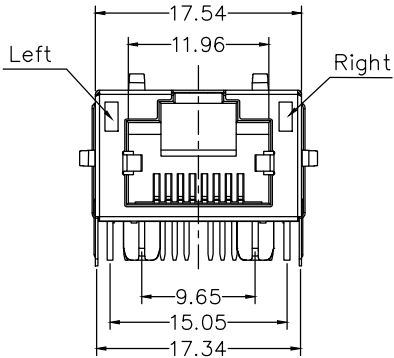


Recommended P.C.Board Layout  
General tolerances:±0.05

**SPECIFICATION**

**Electrical Performance**  
 Current Rating:1.5A AC(rms)/DC  
 Voltage Rating:125V AC(rms)/DC  
 Contact Resistance: 20mΩ Max  
 Insulation Resistance: 500MΩ MIN  
 Withstanding Voltage:1500V AC r.m.s  
 Temperature Range-Operating: -40°C~+85°C

**Material and Plating**  
 Housing:LCP, (UL 94V-0)  
 Terminal:Phosphor Bronze/Selective gold plating on contact areas and bright tin plating on tail areas.  
 Shell:Copper alloy/Nickel plating



**Ordering Information**

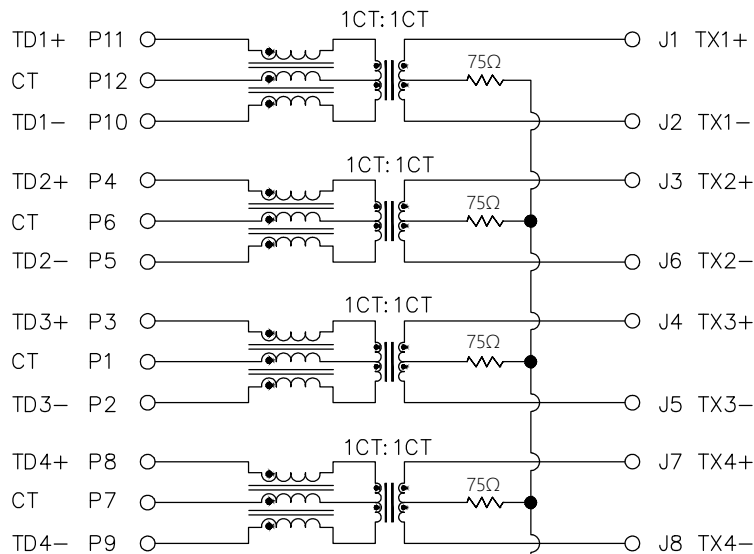
FRJ45 252 — 1 3 XX BK K X 1 0 5  
 1 2 3 4 5 6 7 8 9 10

1   Category FRJ45-RJ45 Connector	2   Distinction No. 252	3   Ports options 1-1 Ports	4   Plating 3-Selective gold plating on contact areas and bright tin plating on tail areas.	5   thickness of Gold Plating 06-6u"
6   Color-Resin BK-Black	7   Packaging K-Tray	8   LED style 1-L: Yellow R: Green 2-L: Green R: Yellow 3-L: Yellow/Green R: Green	9   Contact type 1-Square pin	10   Pin circuits 5-5Gbps

<p>THIRD ANGLE PROJECTION</p>	<p>GENERAL TOLERANCES (UNLESS SPECIFIED)</p>		<p>APPROVE BY LEO</p>	<p>DATE 19/Sept/23</p>	<p>PART NO. FRJ45252-13XXBKXX105</p>	<p>ITEM NO. FRJ45252</p>	<p>Building Technology Cornerstone</p>
	<p>X. ±0.30</p>	<p>X.* ±5°</p>	<p>CHECKED BY GISELLE</p>	<p>DATE 19/Sept/23</p>	<p>TITLE RJ45 Connector 12P8C 90° Angle(5Gbps)</p>		
<p>DESIGN UNITS METRIC(mm)</p>	<p>X.X ±0.20</p>	<p>X.X* ±2°</p>	<p>DRAWN BY Hejianpeng</p>	<p>DATE 19/Sept/23</p>	<p>THIS DRAWING CONTAINS INFORMATION THAT IS PROPRIETARY TO TXGA INDUSTRIAL ELECTRONICS(S.Z)CO.,LTD AND SHOULD NOT BE USED WITHOUT WRITTEN PERMISSION</p>		

REV	LOCATIONS	DESCRIPTION	DATE	REVISER	APPD

PCB Side to PHY

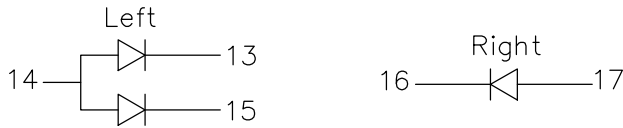


Cable Side

Electrical;  
 Industrial: 150uH Min with 8mA DC bias.  
 Insertion Loss: -0.5 dB Max 1~50MHz.  
                   -1.0 dB Max 50~100MHz.  
                   -2.0 dB Max 100~250MHz.  
 Return loss: -20dB Min 1~40MHz;  
                   -15dB Min 40~100MHz.  
                   -12dB Min 100~150MHz.  
                   -10dB Min 150~200MHz.  
                   -9dB Min 200~250MHz.  
 Cross talk: -35dB Min 1~50MHz;  
               -30dB Min 50~150MHz;  
               -20dB Min 150~250MHz;  
 CMR: -25dB Min 1~250MHz;  
 Hi-Pot: 1500V AC&2250V DC 6S 1mA PRI TO SEC

LED Specification

Standard LED Color	LED Wavelength	Foward(V)
Green	568nm	1.8-2.5V
Yellow	585nm	1.8-2.5V



<p>THIRD ANGLE PROJECTION</p>	GENERAL TOLERANCES (UNLESS SPECIFIED)		APPROVE BY LEO	DATE 19/Sept/23	PART NO. FRJ45252-13XXBKKX105	ITEM NO. FRJ45252	<p>Building Technology Cornerstone</p>	
	X. ±0.30	X.* ±5°	CHECKED BY GISELLE	DATE 19/Sept/23	TITLE RJ45 Connector 12P8C 90° Angle(5Gbps)			REV 0
	DESIGN UNITS METRIC(mm)	X.X ±0.20	X.X* ±2°	DRAWN BY Hejianpeng	DATE 19/Sept/23	THIS DRAWING CONTAINS INFORMATION THAT IS PROPRIETARY TO TXGA INDUSTRIAL ELECTRONICS(S.Z)CO.,LTD AND SHOULD NOT BE USED WITHOUT WRITTEN PERMISSION		
SCALE 5:1	SIZE A4	X.XX ±0.15	X.XX* ±1°					
		X.XXX ±0.10	X.XXX* ±0.5°					