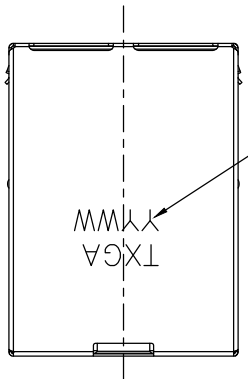
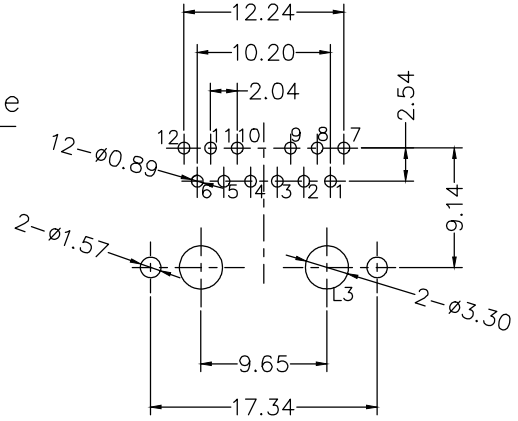


1 2 3 4 5 6 7 8

REV	LOCATIONS	DESCRIPTION	DATE	REVISER	APPD



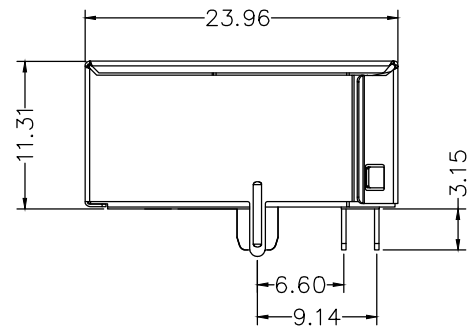
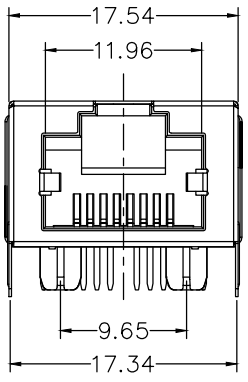
Date Code



Recommended P.C.Board Layout  
General tolerances:±0.05

SPECIFICATION

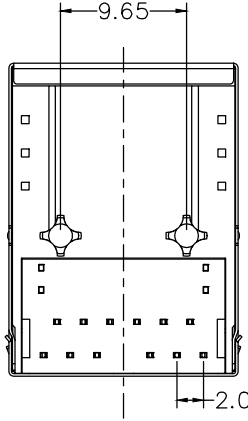
Electrical Performance  
 Current Rating:1.5A AC(rms)/DC  
 Voltage Rating:125V AC(rms)/DC  
 Contact Resistance: 20mΩ Max  
 Insulation Resistance: 500MΩ MIN  
 Withstanding Voltage:1500V AC r.m.s  
 Temperature Range-Operating: -40°C~+85°C  
 Material and Plating  
 Housing:LCP, (UL 94V-0)  
 Terminal:Phosphor Bronze/Selective gold plating on contact areas and bright tin plating on tail areas.  
 Shell:Copper alloy/Nickel plating



Ordering Information

FRJ45 253 — 1 3 XX BK K 0 1 0 A  
 1 2 3 4 5 6 7 8 9

1	Category FRJ45-RJ45 Connector	2	Distinction No. 253	3	Ports options 1-1 Ports	4	Plating 3-Selective gold plating on contact areas and bright tin plating on tail areas.		
5	thickness of Gold Plating 30-30u"	6	Color-Resin BK-Black	7	Packaging K-Tray	8	Contact type 1-Square pin	9	Pin circuits A-10Gbps



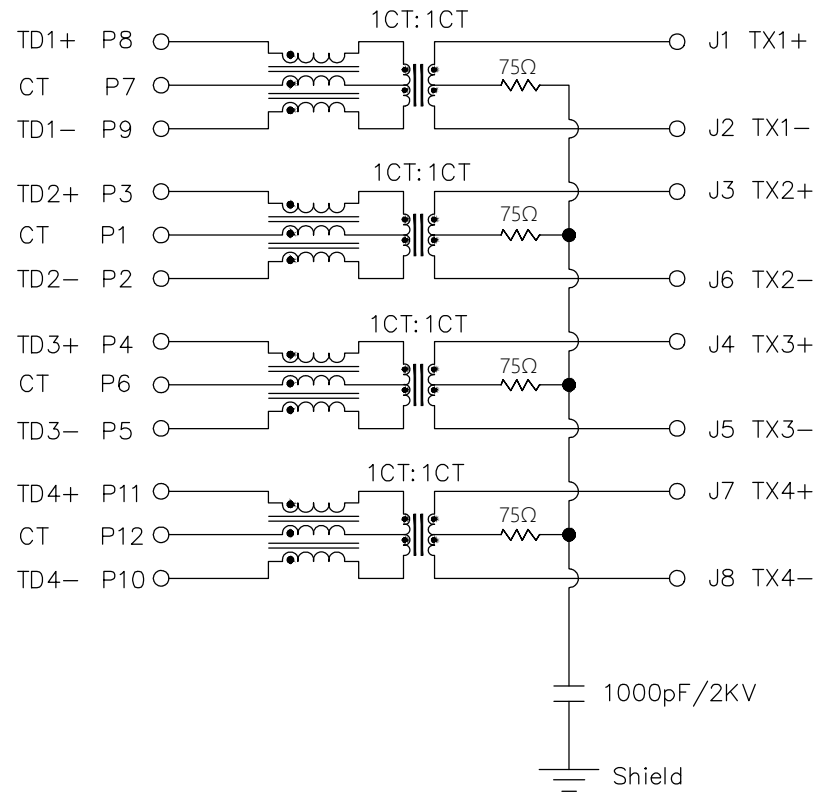
<p>THIRD ANGLE PROJECTION</p>	GENERAL TOLERANCES (UNLESS SPECIFIED)		APPROVE BY LEO	DATE 19/Sept/23	PART NO. FRJ45253-13XXBKK010A	ITEM NO. FRJ45253	<p>Building Technology Cornerstone</p>	
	X. ±0.30	X.* ±5°	CHECKED BY GISELLE	DATE 19/Sept/23	TITLE RJ45 Connector 12P8C 90° Angle(10Gbps)			REV 0
DESIGN UNITS METRIC(mm)	X.X ±0.20	X.X* ±2°	DRAWN BY Hejianpeng	DATE 19/Sept/23	THIS DRAWING CONTAINS INFORMATION THAT IS PROPRIETARY TO TXGA INDUSTRIAL ELECTRONICS(S.Z)CO.,LTD AND SHOULD NOT BE USED WITHOUT WRITTEN PERMISSION			
SCALE 5:1	SIZE A4	X.XX ±0.15						
		X.XXX ±0.10						

1 2 3 4 5 6 7 8

REV	LOCATIONS	DESCRIPTION	DATE	REVISER	APPD

A  
B  
C  
D  
E  
F

PCB Side to PHY



Cable Side

Electrical;  
 Inductical: 120uH Min with 8mA DC bias.  
 Insertion Loss: -0.5 dB Max 1~65MHz.  
                   -0.8 dB Max 65~125MHz.  
                   -1.7 dB Max 125~400MHz.  
                   -3.4 dB Max 400~500MHz.  
 Return loss: -22dB Min 1~100MHz;  
                   -24+20.75\*log(Freq MHz/100MHz) dB Min  
 100~200MHz;  
                   -15dB Min 300MHz.  
                   -12dB Min 400MHz.  
                   -10dB Min 500MHz.  
 Cross talk: -42dB Min 1~100MHz;  
                   -26dB Min 100~500MHz;  
 Commom Mode Rejection: -30dB Min 1~100MHz;  
                                   -25dB Min 100~300MHz;  
                                   -20dB Min 300~500MHz;  
 Hi-Pot: 1500V AC&2250V DC 6S 1mA PRI TO SEC

<p>THIRD ANGLE PROJECTION</p>	GENERAL TOLERANCES (UNLESS SPECIFIED)		APPROVE BY LEO	DATE 19/Sept/23	PART NO. FRJ45253-13XXBKK010A	ITEM NO. FRJ45253	<p>Building Technology Cornerstone</p>	
	X. ±0.30	X.* ±5°	CHECKED BY GISELLE	DATE 19/Sept/23	TITLE RJ45 Connector 12P8C 90° Angle(10Gbps)			REV 0
	DESIGN UNITS METRIC(mm)	X.X ±0.20	X.X* ±2°	DRAWN BY Hejianpeng	DATE 19/Sept/23	THIS DRAWING CONTAINS INFORMATION THAT IS PROPRIETARY TO TXGA INDUSTRIAL ELECTRONICS(S.Z)CO.,LTD AND SHOULD NOT BE USED WITHOUT WRITTEN PERMISSION		
	SCALE 5:1	SIZE A4	X.XX ±0.15	X.XX* ±1°	X.XXX ±0.10	X.XXX* ±0.5°		