

1 2 3 4 5 6 7 8

REV	LOCATIONS	DESCRIPTION	DATE	REVISER	APPD

A

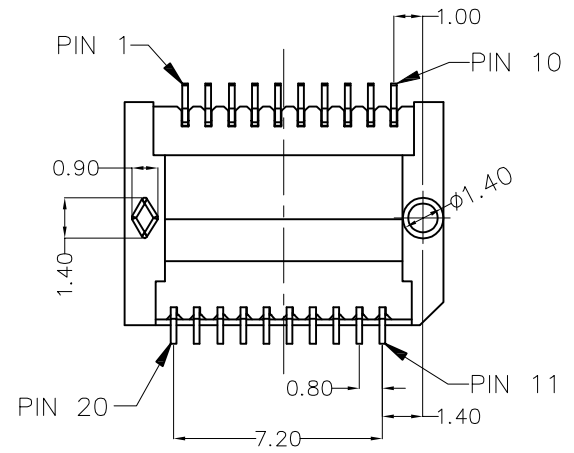
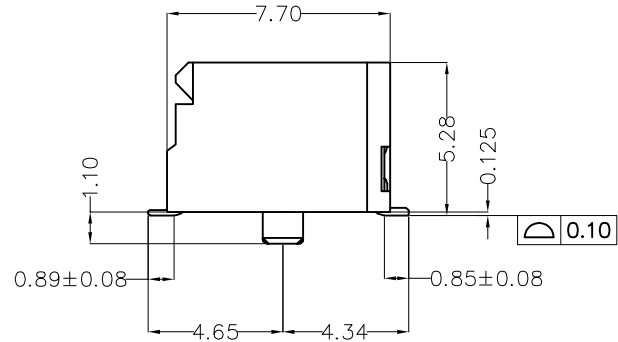
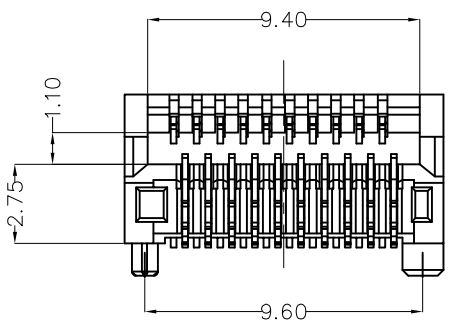
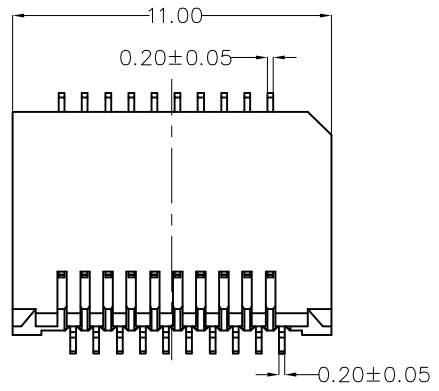
B

C

D

E

F



SPECIFICATIONS

Electrical
 Current Rating: 0.5A AC(rms)/DC
 Contact Resistance: 20 mΩ Max
 Insulation Resistance: 1000 MΩ Min
 Withstanding Voltage: 300V AC r.m.s
 Operating Temperature: -40°C~+95°C

Mechanical parameters:
 Durability:100 Cycles Min
 Insertion Force:40N Max
 Extraction Force:11.5N Max

Material and plating
 Housing:LCP (UL 94V-0) Black
 Contacts:Phosphor Bronze/ 0.375um Gold Plated on contact area
 Gold flash on solder tails

A

B

C

D

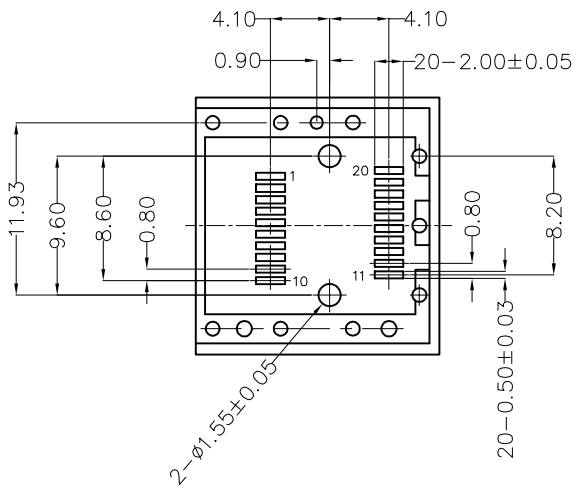
E

F

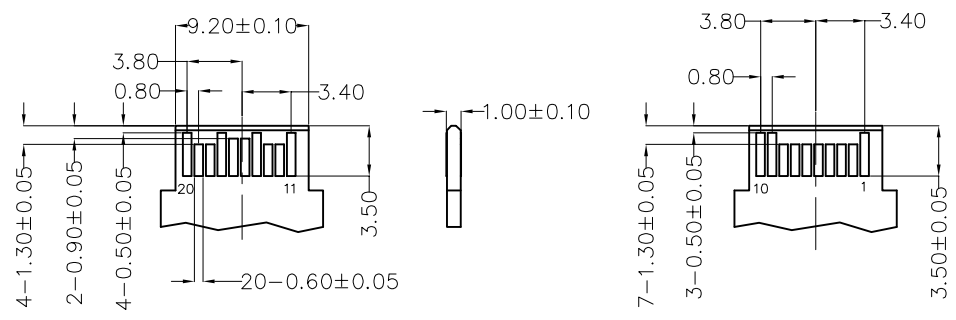
<p>THIRD ANGLE PROJECTION</p>	GENERAL TOLERANCES (UNLESS SPECIFIED)		APPROVE BY	DATE	PART NO.	ITEM NO.	<p>Building Technology Cornerstone</p>
	X. ±0.50	X.* ±5°	LEO	12/OCT/22	FSFPA-01S107000-001	FSFPA-001	
	X.X ±0.30	X.X* ±2°	CHECKED BY	DATE	TITLE		REV 0
	X.XX ±0.20	X.XX* ±1°	GISELLE	12/OCT/22	Fiber optic transceiver module		SHEET NO. 1/3
SCALE	SIZE	X.XXX ±0.10	X.XXX* ±0.5°	DRAWN BY	DATE	THIS DRAWING CONTAINS INFORMATION THAT IS PROPRIETARY TO TXGA INDUSTRIAL ELECTRONICS(S.Z)CO.,LTD AND SHOULD NOT BE USED WITHOUT WRITTEN PERMISSION	
5:1	A4			MATT	12/OCT/22		

1 2 3 4 5 6 7 8

REV	LOCATIONS	DESCRIPTION	DATE	REVISER	APPD



Recommended P.C.Board Layout



Top View Of Board

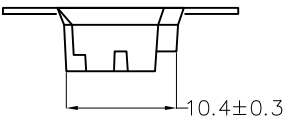
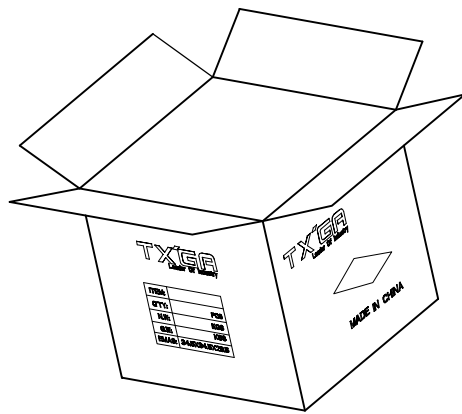
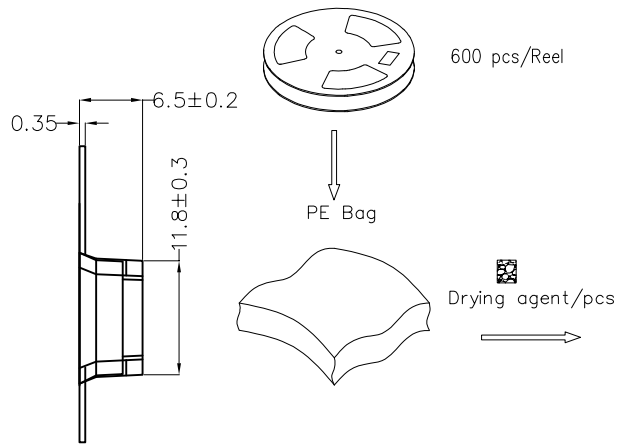
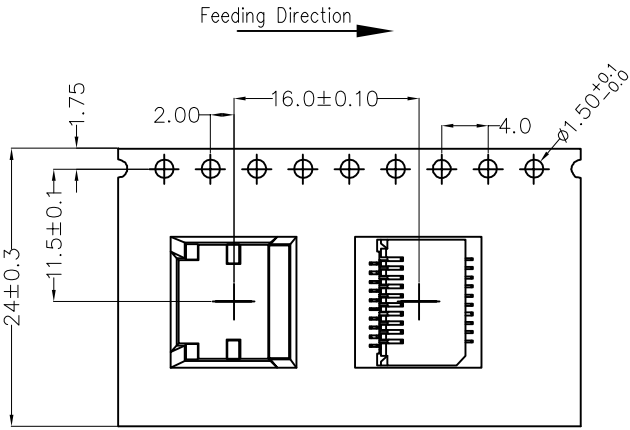
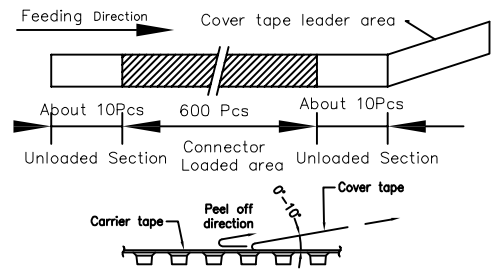
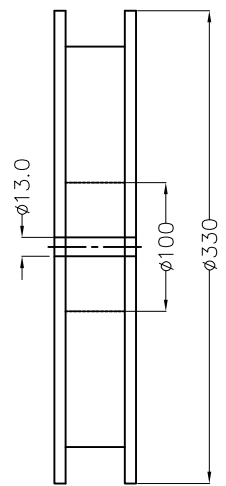
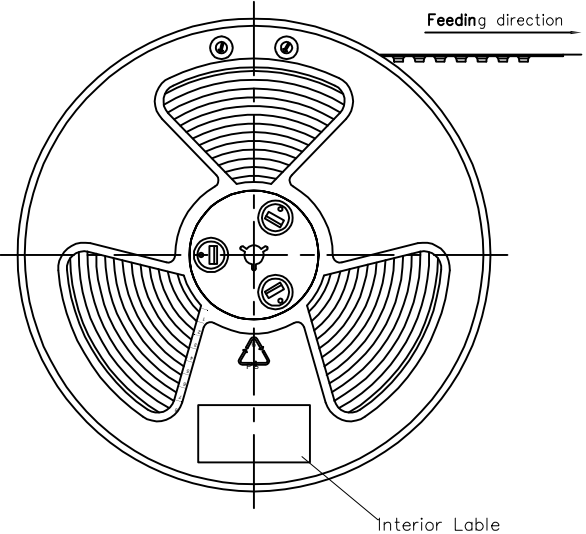
Bottom View Of Board

Recommended Mating Transceiver P.C.Board Layout

 THIRD ANGLE PROJECTION	GENERAL TOLERANCES (UNLESS SPECIFIED)		APPROVE BY	DATE	PART NO.	ITEM NO.	 Building Technology Cornerstone	
	X. ±0.50	X.* ±5°	LEO	12/OCT/22	FSFPA-01S107000-001	FSFPA-001		
	DESIGN UNITS METRIC(mm)	X.X ±0.30	X.X* ±2°	CHECKED BY	DATE	TITLE		REV 0
	SCALE 5:1	SIZE A4	X.XX ±0.20	GISELLE	12/OCT/22	Fiber optic transceiver module		SHEET NO. 2/3
		X.XXX ±0.10	X.XXX* ±0.5°	DRAWN BY	DATE	THIS DRAWING CONTAINS INFORMATION THAT IS PROPRIETARY TO TXGA INDUSTRIAL ELECTRONICS(S.Z)CO.,LTD AND SHOULD NOT BE USED WITHOUT WRITTEN PERMISSION		
				MATT	12/OCT/22			

REV	LOCATIONS	DESCRIPTION	DATE	REVISER	APPD

- Note:
- 1.10 sprocket hole cumulative tolerance ± 0.2
 2. Carrier camber is within 1.0mm in 100mm
 3. Material: Conductive polystyrene Alloy 100% recyclable
 4. All dimensions meet EIA-481 requirements
 5. Component load per 13" reel: 600 pcs



 THIRD ANGLE PROJECTION	GENERAL TOLERANCES (UNLESS SPECIFIED)		APPROVE BY	DATE	PART NO.	ITEM NO.	 Building Technology Cornerstone
	X. ± 0.50	X.* $\pm 5^\circ$	LEO	12/OCT/22	FSFPA-01S107000-001	FSFPA-001	
DESIGN UNITS METRIC(mm)	X.X ± 0.30	X.X* $\pm 2^\circ$	CHECKED BY	DATE	TITLE		REV 0
SCALE 5:1	X.XX ± 0.20	X.XX* $\pm 1^\circ$	GISELLE	12/OCT/22	Fiber optic transceiver module		SHEET NO. 3/3
SIZE A4	X.XXX ± 0.10	X.XXX* $\pm 0.5^\circ$	DRAWN BY	DATE	THIS DRAWING CONTAINS INFORMATION THAT IS PROPRIETARY TO TXGA INDUSTRIAL ELECTRONICS(S.Z)CO.,LTD AND SHOULD NOT BE USED WITHOUT WRITTEN PERMISSION		
			MATT	12/OCT/22			