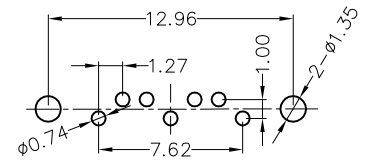
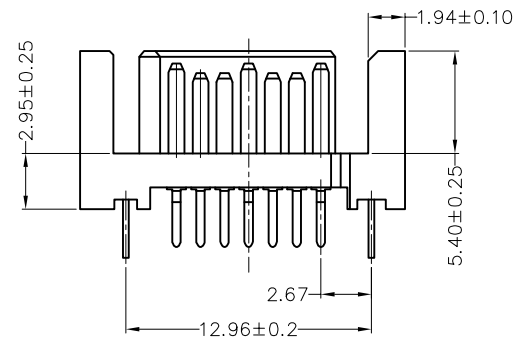
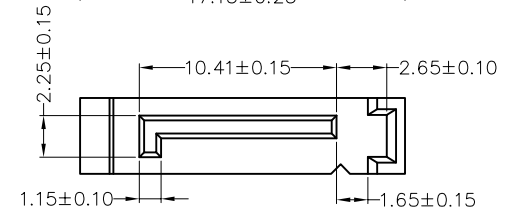
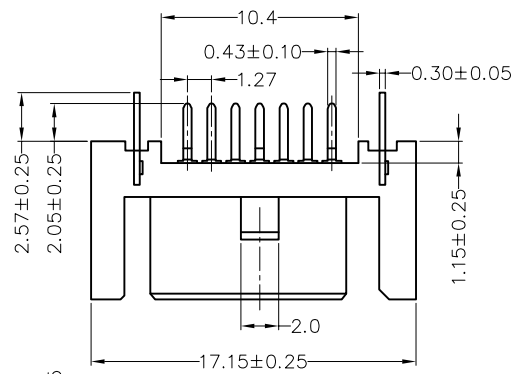


REV	LOCATIONS	DESCRIPTION	DATE	REVISER	APPD

SPECIFICATIONS

**Electrical**  
 Current Rating: 1.5A AC(rms)/DC  
 Contact Resistance: 30 mΩ Max  
 Insulation Resistance: 1000 MΩ MIN  
 Withstanding Voltage: 500V AC r.m.s  
 Temperature Range-Operating: -40°C~+85°C

**Material and Plating**  
 Housing: Thermoplastic UL94V-0, Black  
 Terminal: Copper Alloy /Gold Plating on Contact Area,  
 100u" Min tin Plating on Soldertails, 50u" Min  
 Nickel under plating Over All.  
 Board Lock: Copper Alloy /Tin Plated Over Nickel



Recommended P.C.Board Layout  
 Tolerances: ±0.05

Ordering Information

FST 07 20 - M D S 3 XX 3 BK X  
 1 2 3 4 5 6 7 8 9 10 11

1	Category FST-SATA	2	Circuits 07-7	3	Distinction No. 19	4	Type M-Male	5	Assembly Layout D-DIP	6	Entry Angle S-Vertical
7	Plating 3-Selective gold plated on contact area and tin on tails		8	Thickness of Gold Plating 01-1u" 05-5u" ... Custom Plate Available		9	Material-Resin 3-LCP	10	Color-Resin BK-Black	11	Packaging K-Tray

THIRD ANGLE PROJECTION	GENERAL TOLERANCES (UNLESS SPECIFIED)		APPROVE BY LEO	DATE 15/AUG/09	PART NO. FST0720-MDS3XX3BKK	ITEM NO. FST0720	Building Technology Cornerstone
	DESIGN UNITS Metric(mm)	X.±0.30	X.±5'	CHECKED BY GISELLE	DATE 15/AUG/09	TITLE SATA 7P MALE DIP	
SCALE 2.5:1	SIZE A4	X.XX±0.15	.XX'±1'	DRAWN BY MATT	DATE 15/AUG/09	THIS DRAWING CONTAINS INFORMATION THAT IS PROPRIETARY TO TXGA INDUSTRIAL ELECTRONICS(S.Z)CO.,LTD AND SHOULD NOT BE USED WITHOUT WRITTEN PERMISSION	
		X.XXX±0.10	.XXX'±0.5'			REV 0	SHEET NO. 1/1