

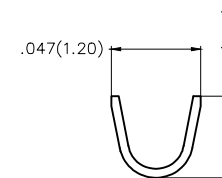
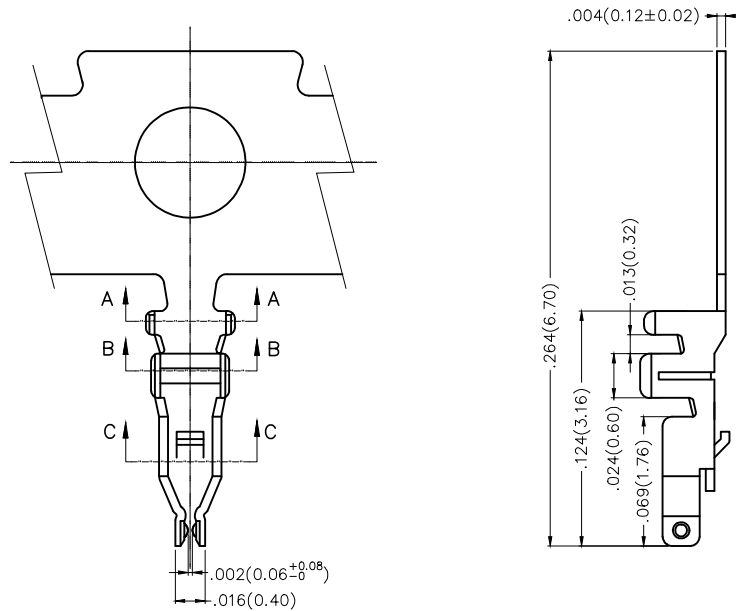
REV	LOCATIONS	DESCRIPTION	DATE	REVISER	APPD

SPECIFICATIONS

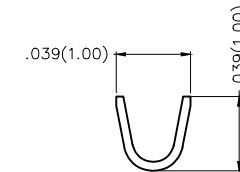
Electrical

Current Rating: 1.5A AC(rms)/DC
Voltage Rating: 50V AC(rms)/DC
Contact Resistance: 20 mΩ Max
Insulation Resistance: 100 MΩ Min
Withstanding Voltage: 500V AC r.m.s
Temperature Range—Operating: -25°C~+85°C

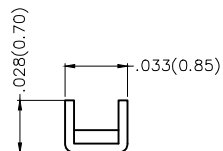
Material: Phosphor Bronze
Plating: Gold plated
Wire Range: 30AWG~36AWG
Applicable Housing: FHG12001 Series





Section A-A



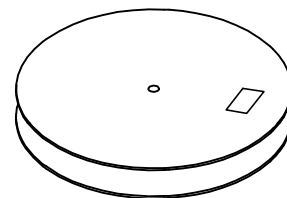
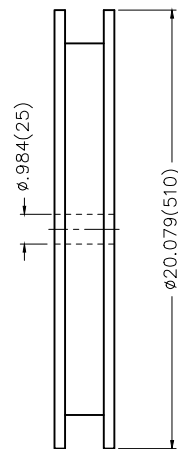
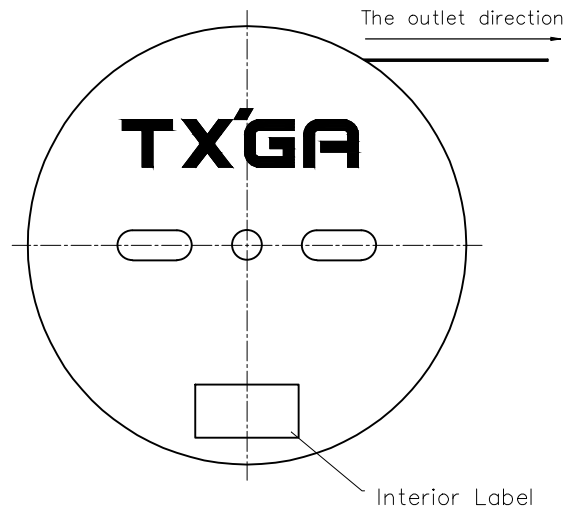
Section B-B



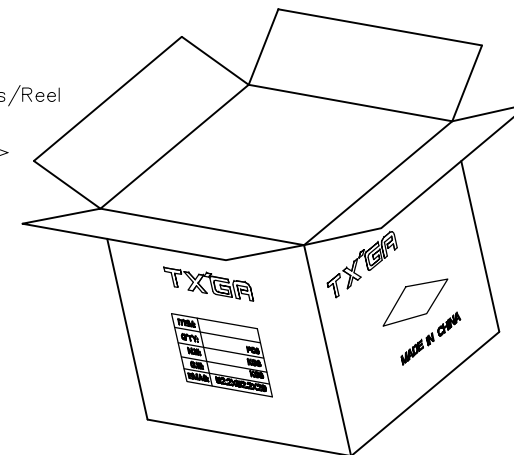
Section C-C



 THIRD ANGLE PROJECTION		GENERAL TOLERANCES (UNLESS SPECIFIED)		APPROVE BY FRANK	DATE 05/AUG/16	PART NO. FT12001-F1H	ITEM NO. FT12001	 Leader Of Industry	
DESIGN UNITS Inch (metric)		X.±.012(0.30)	X.*±5°	CHECKED BY	DATE	TITLE Wire to Board Pitch 1.2mm(Terminal)		REV 0	SHEET NO. 1/2
		X.X±.008(0.20)	.X°±2°	CHERRY	05/AUG/16				
		X.XX±.006(0.15)	.XX°±1°	DRAWN BY	DATE	THIS DRAWING CONTAINS INFORMATION THAT IS PROPRIETARY TO TXGA INDUSTRIAL ELECTRONICS(S.Z)CO.,LTD AND SHOULD NOT BE USED WITHOUT WRITTEN PERMISSION			
SCALE 5:1	SIZE A4	X.XXX±.004(0.10)	.XXX°±0.5°	VERNON	05/AUG/16				

REV	LOCATIONS	DESCRIPTION	DATE	REVISER	APPD



20,000 Pcs/Reel



<div></div> <div>THIRD ANGLE PROJECTION</div>	GENERAL TOLERANCES (UNLESS SPECIFIED)		APPROVE BY FRANK	DATE 05/AUG/16	PART NO. FT12001-F1H	ITEM NO. FT12001	<div></div> <div>Leader Of Industry</div>	
	X.±.012(0.30)	X.'±5'	CHECKED BY	DATE	TITLE Wire to Board Pitch 1.2mm(Terminal)			
	X.X±.008(0.20)	X.'±2'	CHERRY	05/AUG/16				
	DESIGN UNITS Inch (metric)	X.XX±.006(0.15)	.XX'±1"	DRAWN BY	DATE	THIS DRAWING CONTAINS INFORMATION THAT IS PROPRIETARY TO TXGA INDUSTRIAL ELECTRONICS(S.Z)CO.,LTD AND SHOULD NOT BE USED WITHOUT WRITTEN PERMISSION		
SCALE 5:1	X.XXX±.004(0.10)	.XXX'±0.5"	VERNON	05/AUG/16				