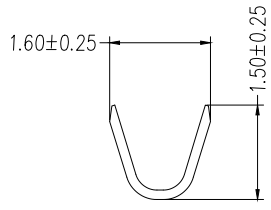
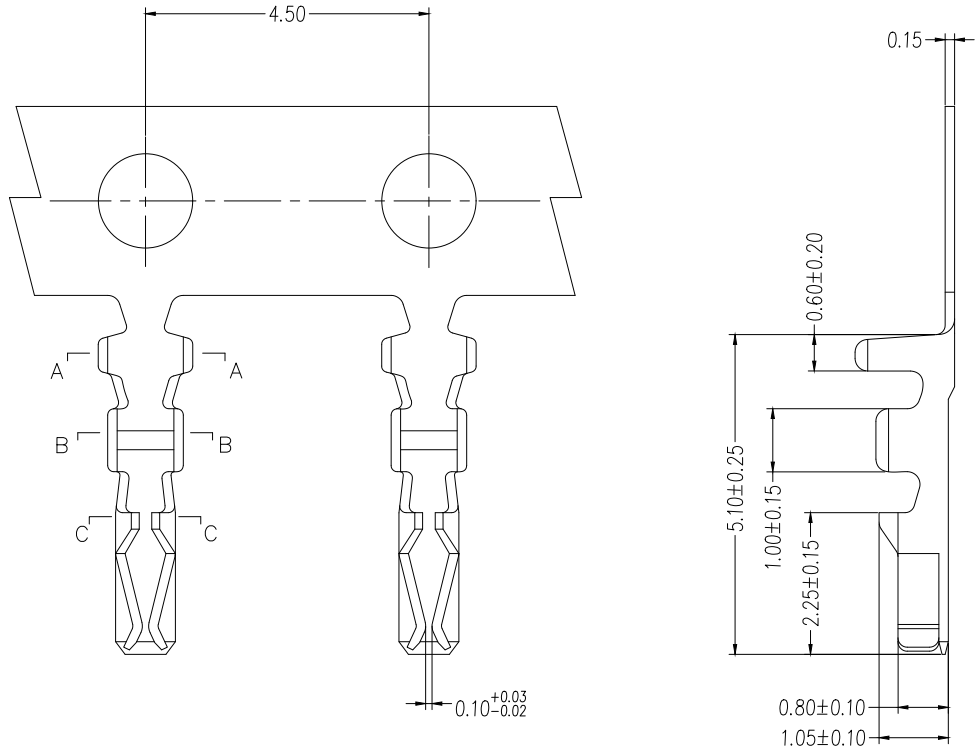
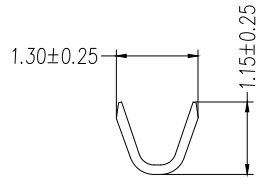


1 2 3 4 5 6 7 8

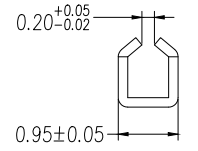
REV	LOCATIONS	DESCRIPTION	DATE	REVISER	APPD



SEC: A-A



SEC: B-B



SEC: C-C

SPECIFICATIONS

Electrical  
 Current Rating: 1A AC/DC  
 Voltage Rating: 150V AC/DC  
 Contact Resistance: ≤20mΩ  
 Insulation Resistance: 500 MΩ MIN  
 Withstanding Voltage: 500V AC/minute  
 Temperature Range—Operating: -25°C~+85°C  
 Apply to gauge: 32AWG~26AWG  
 Material: Copper Alloy, Tin-Plated  
 Mates With Housing: FHG12510 Series

A  
B  
C  
D  
E  
F

A  
B  
C  
D  
E  
F

1 2 3 4 5 6 7 8

<p>THIRD ANGLE PROJECTION</p>	GENERAL TOLERANCES (UNLESS SPECIFIED)		APPROVE BY	DATE	PART NO.	ITEM NO.	<p>Building Technology Cornerstone</p>
	X. ±0.30	X.* ±5'	LEO	26/OCT/21	FT12511-F8H	FT12511	
	DESIGN UNITS mm		CHECKED BY	DATE	TITLE		REV 0 SHEET NO. 1/2
	SCALE 5:1 SIZE A4		GISELLE	26/OCT/21	Wire to Board Pitch 1.25mm(Terminal)		
		X.XX ±0.15	X.XX' ±1'	DRAWN BY	DATE	THIS DRAWING CONTAINS INFORMATION THAT IS PROPRIETARY TO TXGA INDUSTRIAL ELECTRONICS(S.Z)CO.,LTD AND SHOULD NOT BE USED WITHOUT WRITTEN PERMISSION	
		X.XXX ±0.10	X.XXX' ±0.5'	PYD	26/OCT/21		

1 2 3 4 5 6 7 8

REV	LOCATIONS	DESCRIPTION	DATE	REVISER	APPD

A

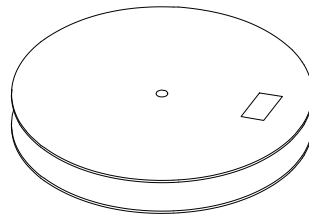
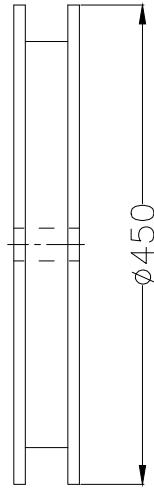
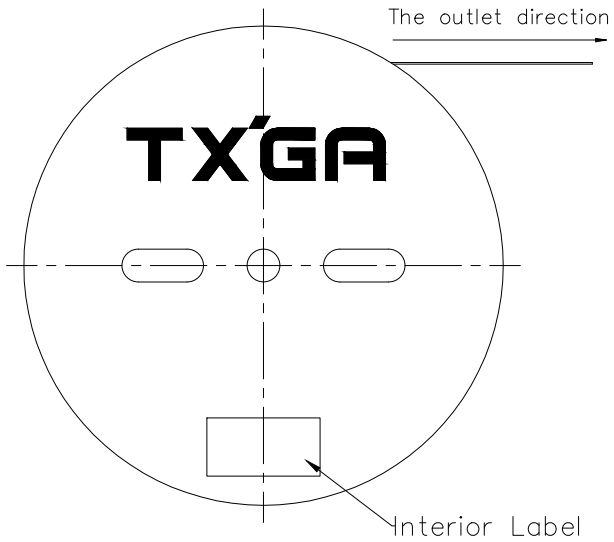
B

C

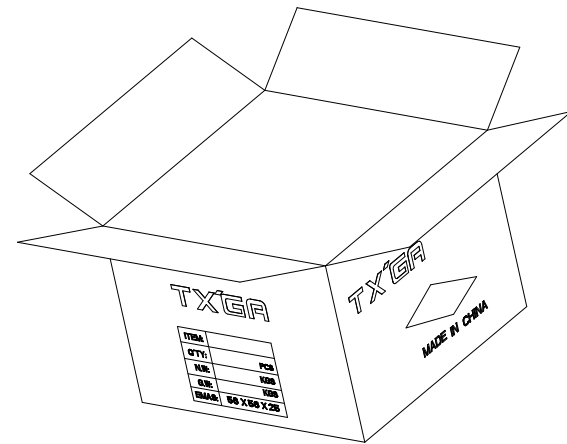
D

E

F



20000 pcs/Reel



A

B

C

D

E

F

<p>THIRD ANGLE PROJECTION</p>	GENERAL TOLERANCES (UNLESS SPECIFIED)		APPROVE BY	DATE	PART NO.	ITEM NO.	<p>Building Technology Cornerstone</p>	
	X. ±0.30	X.* ±5'	LEO	26/OCT/21	FT12511-F8H	FT12511		
	DESIGN UNITS mm		CHECKED BY	DATE	TITLE		REV 0	SHEET NO. 2/2
	SCALE 5:1	SIZE A4	GISSELLE	26/OCT/21	Wire to Board Pitch 1.25mm(Terminal)		THIS DRAWING CONTAINS INFORMATION THAT IS PROPRIETARY TO TXGA INDUSTRIAL ELECTRONICS(S.Z)CO.,LTD AND SHOULD NOT BE USED WITHOUT WRITTEN PERMISSION	
		X.XX ±0.15	X.XX' ±1'	DRAWN BY	DATE			
		X.XXX ±0.10	X.XXX' ±0.5'	PYD	26/OCT/21			

1 2 3 4 5 6 7 8