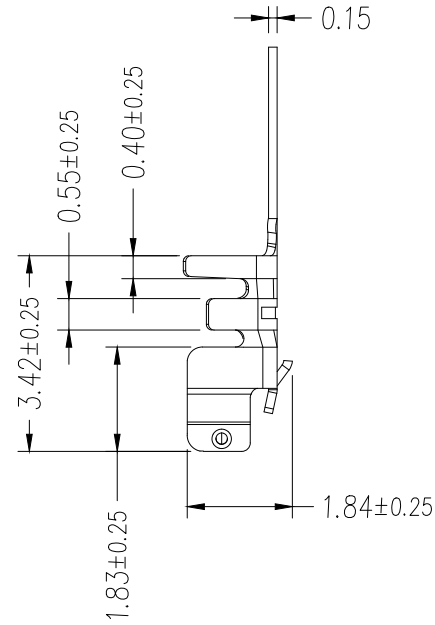
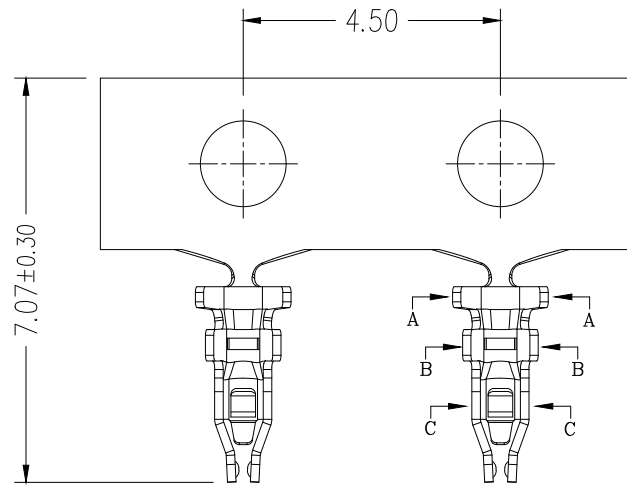


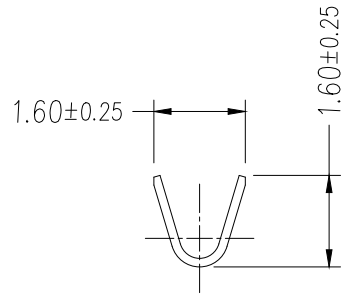
1 2 3 4 5 6 7 8

REV	LOCATIONS	DESCRIPTION	DATE	REVISER	APPD

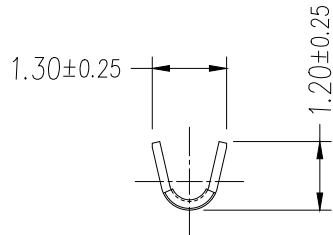


SPECIFICATIONS

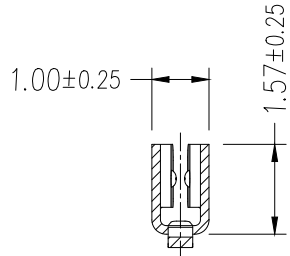
Electrical
 Current Rating: 1A AC/DC
 Voltage Rating: 100V AC/DC
 Contact Resistance: ≤ 40mΩ
 Insulation Resistance: 500 MΩ MIN
 Withstanding Voltage: 500V AC/minute
 Temperature Range—Operating: -25°C ~ +85°C
 Apply to gauge: 30AWG~26AWG
 Material: Copper Alloy, Tin-Plated
 Mates With Housing: FHG15006 Series



SEC: A-A



SEC: B-B



SEC: C-C

1 2 3 4 5 6 7 8

<p>THIRD ANGLE PROJECTION</p>	GENERAL TOLERANCES (UNLESS SPECIFIED)		APPROVE BY	DATE	PART NO.	ITEM NO.	<p>Building Technology Cornerstone</p>	
	X. ±0.30	X.* ±5'	LEO	18/DEC/21	FT15006-F8H	FT15006		
	DESIGN UNITS mm		CHECKED BY	DATE	TITLE		REV 0	SHEET NO. 1/2
	SCALE 5:1	SIZE A4	GISELLE	18/DEC/21	Wire to Board Pitch 1.25mm(Terminal)			
		X.XX ±0.15	X.XX' ±1'	DRAWN BY	DATE	THIS DRAWING CONTAINS INFORMATION THAT IS PROPRIETARY TO TXGA INDUSTRIAL ELECTRONICS(S.Z)CO.,LTD AND SHOULD NOT BE USED WITHOUT WRITTEN PERMISSION		
		X.XXX ±0.10	X.XXX' ±0.5'	PYD	18/DEC/21			

A
B
C
D
E
F

1 2 3 4 5 6 7 8

REV	LOCATIONS	DESCRIPTION	DATE	REVISER	APPD

A

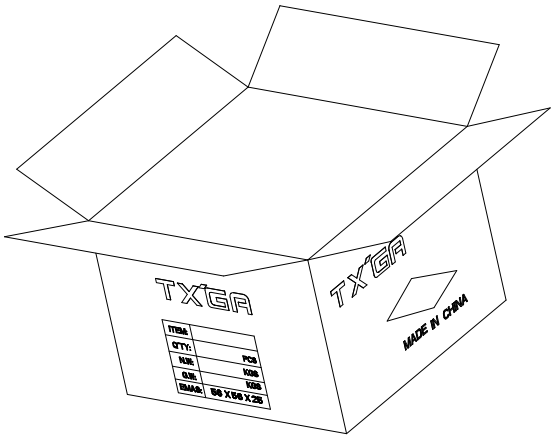
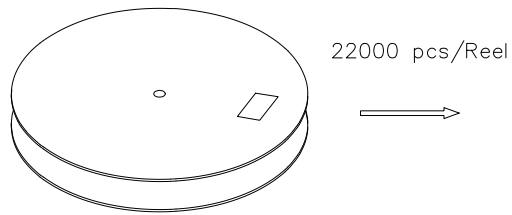
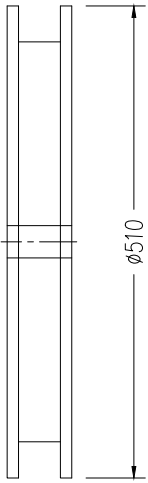
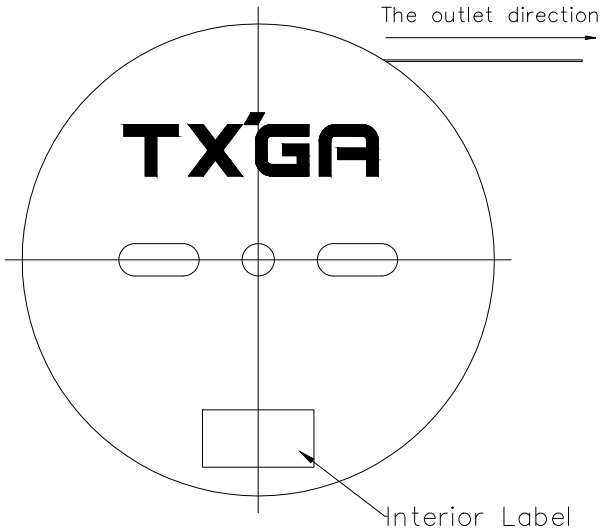
B

C

D

E

F



A

B

C

D

E

F

<p>THIRD ANGLE PROJECTION</p>	GENERAL TOLERANCES (UNLESS SPECIFIED)		APPROVE BY	DATE	PART NO.	ITEM NO.	<p>Building Technology Cornerstone</p>		
	X. ±0.30	X.* ±5'	LEO	18/DEC/21	FT15006-F8H	FT15006			
	X.X ±0.20	X.X' ±2'	CHECKED BY	DATE	TITLE Wire to Board Pitch 1.25mm(Terminal)			REV 0	SHEET NO. 2/2
	X.XX ±0.15	X.XX' ±1'	GISELLE	18/DEC/21	THIS DRAWING CONTAINS INFORMATION THAT IS PROPRIETARY TO TXGA INDUSTRIAL ELECTRONICS(S.Z)CO.,LTD AND SHOULD NOT BE USED WITHOUT WRITTEN PERMISSION				
SCALE 5:1	SIZE A4	X.XXX ±0.10	X.XXX' ±0.5'	DRAWN BY	DATE				
				PYD	18/DEC/21				

1 2 3 4 5 6 7 8