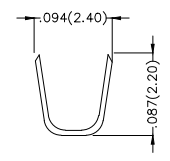
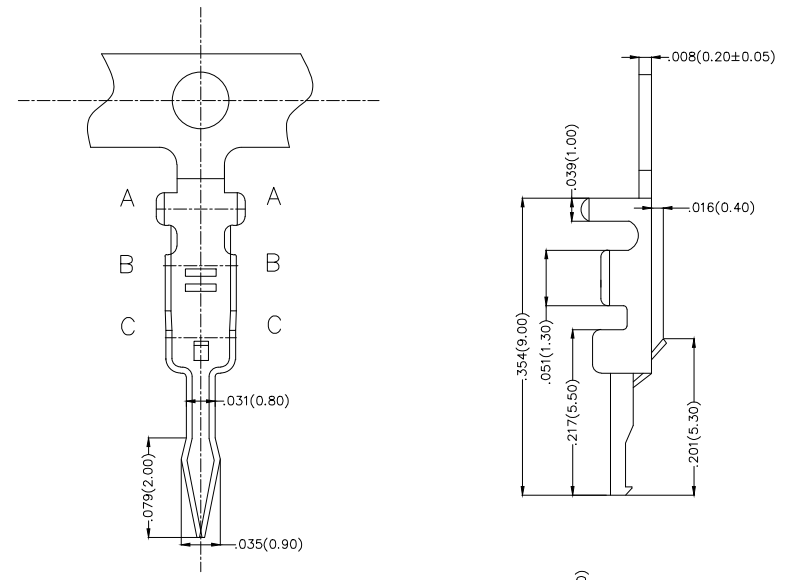


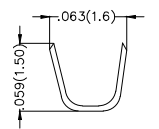
REV	LOCATIONS	DESCRIPTION	DATE	REVISER	APPD

Notes:

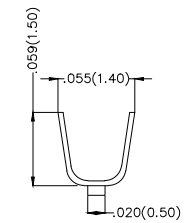
- 1.Material: Phosphor Bronze C5191
- 2.Plating: Tin Plated
- 3.Wire Range: 24AWG~28AWG
- 4.Applicable Housing: HG20009 Series
- 5.Minimum Order Quantity :15,000 PCS



Section A-A



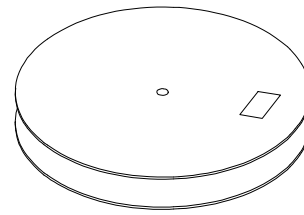
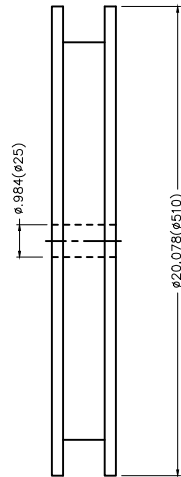
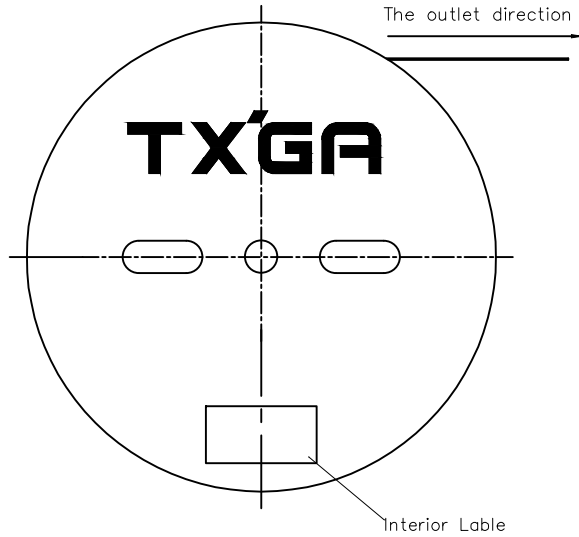
Section B-B



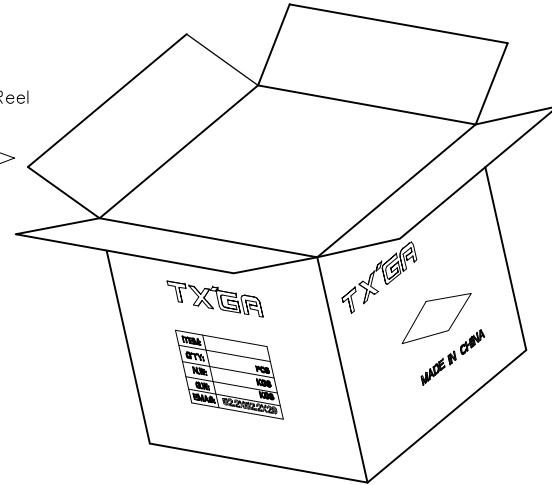
Section C-C

<p>THIRD ANGLE PROJECTION</p>	GENERAL TOLERANCES (UNLESS SPECIFIED)		APPROVE BY	DATE	PART NO.	ITEM NO.	<p>Leader Of Industry</p>	
	X.±.012(0.30)	X.'±5'	FRANK	18/JUN/13	FT20008-M2H	FT20008		
	DESIGN UNITS Inch (metric)	X.X±.008(0.20)	X.'±2'	CHECKED BY	DATE	TITLE		<p>REV 0</p> <p>SHEET NO. 1/2</p>
	SCALE	X.XX±.006(0.15)	X.'±1'	CHERRY	18/JUN/13	Wire to Board Pitch 2.0mm(Terminal)		
SIZE	X.XXX±.004(0.10)	X.'±0.5'	DRAWN BY	DATE	THIS DRAWING CONTAINS INFORMATION THAT IS PROPRIETARY TO TXGA INDUSTRIAL ELECTRONICS(S.Z)CO.,LTD AND SHOULD NOT BE USED WITHOUT WRITTEN PERMISSION			
5:1	A4		KATE	18/JUN/13				

REV	LOCATIONS	DESCRIPTION	DATE	REVISER	APPD



15,000Pcs/Reel



<p>THIRD ANGLE PROJECTION</p>	GENERAL TOLERANCES (UNLESS SPECIFIED)		APPROVE BY	DATE	PART NO.	ITEM NO.	<p>Leader Of Industry</p>	
	X.±.012(0.30)	X.'±5'	FRANK	18/JUN/13	FT20008-M2H	FT20008		
	DESIGN UNITS Inch (metric)	X.X±.008(0.20)	.X'±2'	CHECKED BY	DATE	TITLE		REV 0
	SCALE 5:1	X.XX±.006(0.15)	.XX'±1'	CHERRY	18/JUN/13	Wire to Board Pitch 2.0mm(Terminal)		SHEET NO. 2/2
SIZE A4	X.XXX±.004(0.10)	.XXX'±0.5'	DRAWN BY	DATE	THIS DRAWING CONTAINS INFORMATION THAT IS PROPRIETARY TO TXGA INDUSTRIAL ELECTRONICS(S.Z)CO.,LTD AND SHOULD NOT BE USED WITHOUT WRITTEN PERMISSION			
			KATE	18/JUN/13				