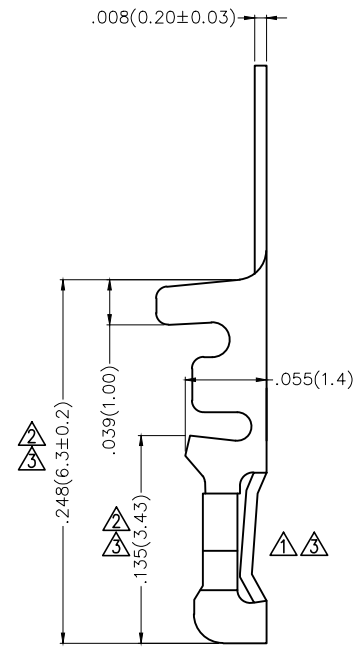
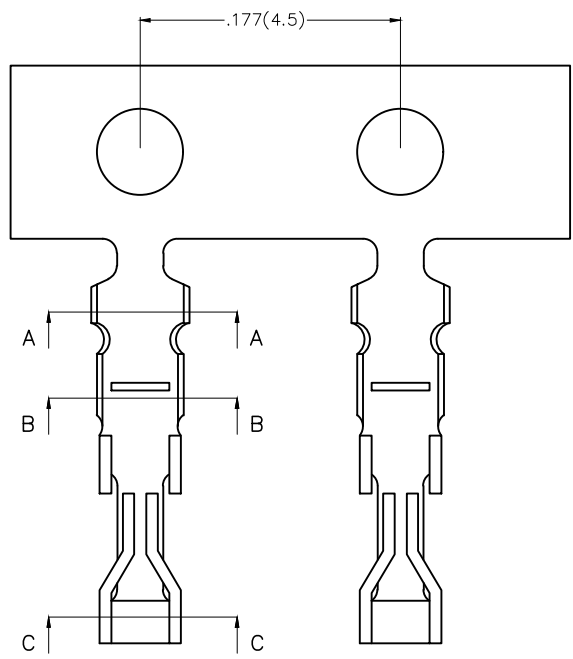
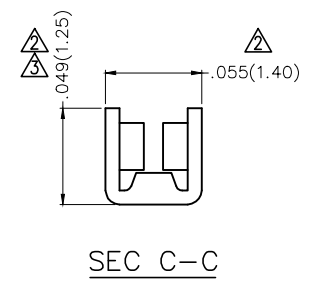
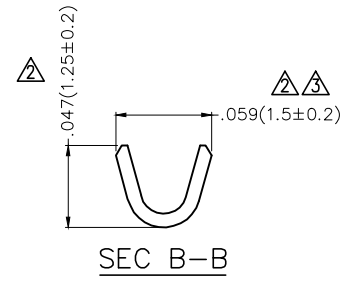
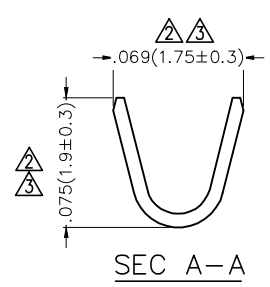


REV	LOCATIONS	DESCRIPTION	DATE	REVISER	APPD
1	△	Structural changes	29/JUN/20	KATE	CHERRY
2	△	MOQ: Change 10,000 into 20,000 pcs/reel	28/JUN/23	MATT	LEO
		Size change	28/JUN/23	MATT	LEO
3	△	Update structure and dimensions	24/APR/25	MATT	LEO



Electrical

Material: Phosphor Bronze C5191
 Plating: Gold or Tin Plated
 Wire Range: 26AWG~30AWG
 Applicable Housing: FHG20010 Series
 Minimum Order Quantity : 20,000 pcs △



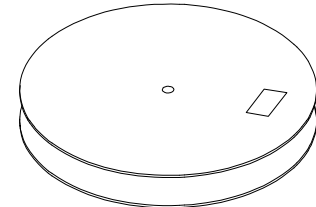
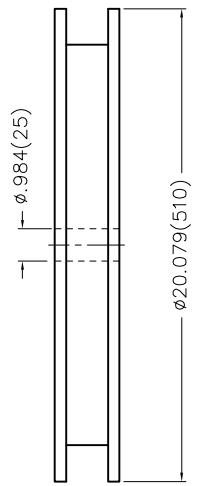
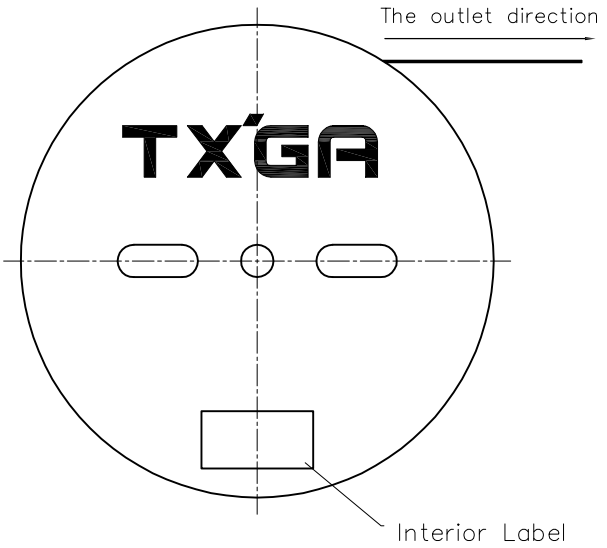
Ordering Information

FT 200 09 — F X H
 1 2 3 4 5 6

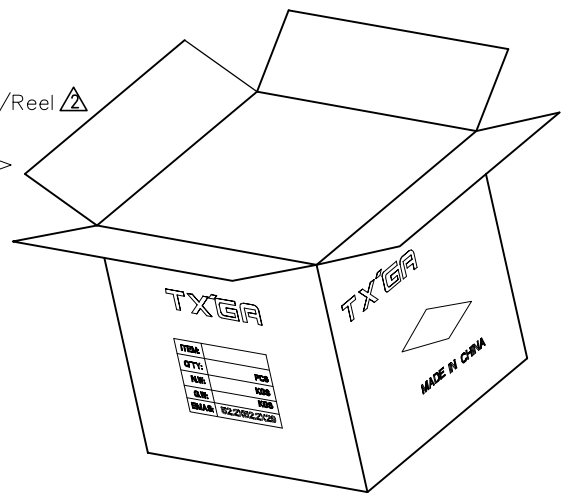
1	Category	2	Series Number	3	Distinction No.	4	Type	5	Plating	6	Packaging
	FT-Terminal		200-Pitch2.00mm		09		F-Female		1-Gold Flash 2-Tin Plated 3-Gold on contact ,Nickel on tail△		H-Paper Axis

 THIRD ANGLE PROJECTION	GENERAL TOLERANCES (UNLESS SPECIFIED)		APPROVE BY Frank	DATE 13/JUL/11	PART NO. FT20009-FXH	ITEM NO. FT20009	 Building Technology Cornerstone	
	DESIGN UNITS Inch (metric)	X.±.012(0.30) X.X±.008(0.20)	X.±5' .X'±2'	CHECKED BY FAN	DATE 13/JUL/11	TITLE Wire to Board Pitch 2.0mm(Terminal)		REV 3
SCALE 5:1	SIZE A4	X.XX±.006(0.15) X.XXX±.004(0.10)	.XX'±1' .XXX'±0.5'	DRAWN BY Cherry	DATE 13/JUL/11	THIS DRAWING CONTAINS INFORMATION THAT IS PROPRIETARY TO TXGA INDUSTRIAL ELECTRONICS(S.Z)CO.,LTD AND SHOULD NOT BE USED WITHOUT WRITTEN PERMISSION		

REV	LOCATIONS	DESCRIPTION	DATE	REVISER	APPD



20,000 Pcs/Reel \triangle



<p>THIRD ANGLE PROJECTION</p>	GENERAL TOLERANCES (UNLESS SPECIFIED)		APPROVE BY Frank	DATE 13/JUL/11	PART NO. FT20009-FXH	ITEM NO. FT20009	<p>Building Technology Cornerstone</p>	
	X.±.012(0.30)	X.±5'	CHECKED BY FAN	DATE 13/JUL/11	TITLE Wire to Board Pitch 2.0mm(Terminal)			REV 3
	DESIGN UNITS Inch (metric)	X.X±.008(0.20)	.X'±2"	DRAWN BY Cherry	DATE 13/JUL/11	THIS DRAWING CONTAINS INFORMATION THAT IS PROPRIETARY TO TXGA INDUSTRIAL ELECTRONICS(S.Z)CO.,LTD AND SHOULD NOT BE USED WITHOUT WRITTEN PERMISSION		
SCALE 5:1	SIZE A4	X.XX±.006(0.15)	.XX'±1"					
		X.XXX±.004(0.10)	.XXX'±0.5"					