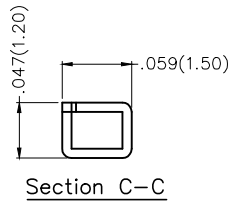
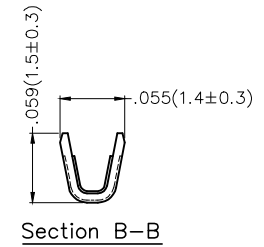
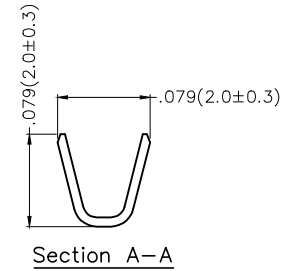
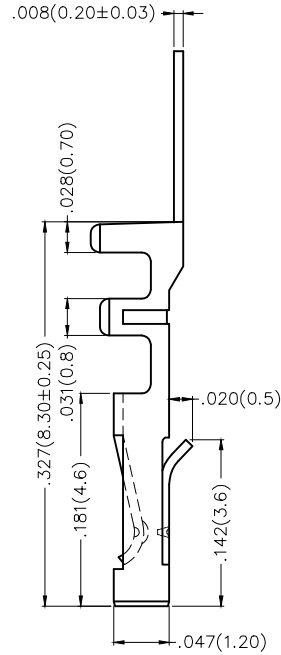
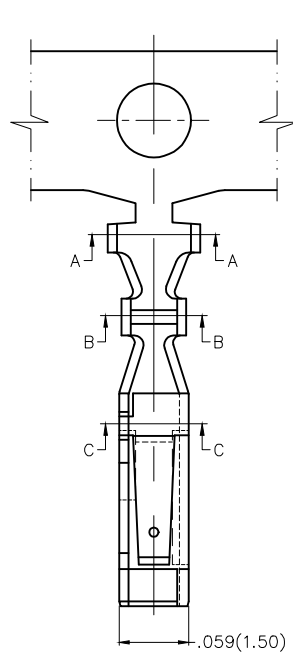


1 2 3 4 5 6 7 8

REV	LOCATIONS	DESCRIPTION	DATE	REVISER	APPD

Electrical  
 Material: Phosphor Bronze C5191  
 Plating: Tin-Plated  
 Wire Range: 28AWG~24AWG  
 Applicable Housing: FHG20011 Series  
 Minimum Order Quantity :17,000 pcs



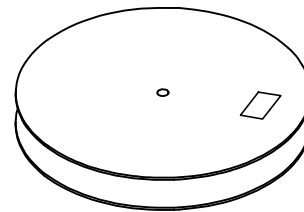
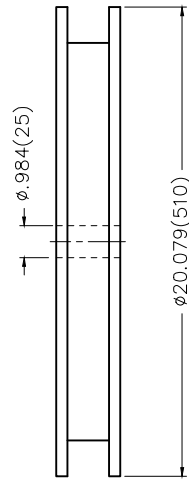
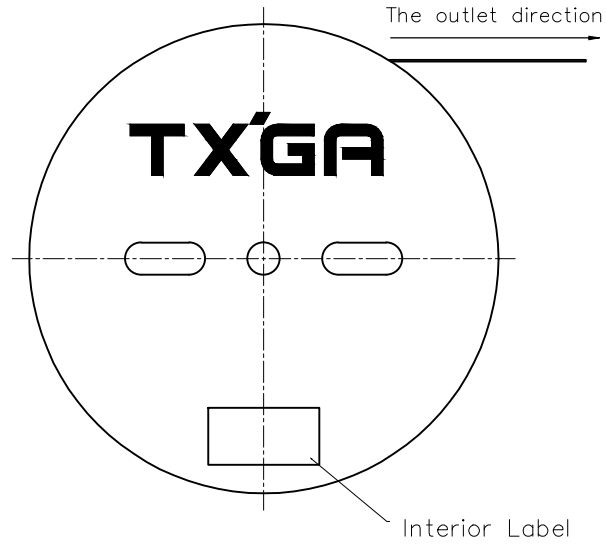
 THIRD ANGLE PROJECTION	GENERAL TOLERANCES (UNLESS SPECIFIED)		APPROVE BY FRANK	DATE 29/NOV/14	PART NO. FT20011-F2H	ITEM NO. FT20011	 Leader Of Industry	
	DESIGN UNITS Inch (metric)	X.±.012(0.30) X.X±.008(0.20) X.XX±.006(0.15) X.XXX±.004(0.10)	X'±5' .X'±2' .XX'±1' .XXX'±0.5'	CHECKED BY FAN	DATE 29/NOV/14	TITLE Wire to Board Pitch 2.0mm(Terminal)		
SCALE 5:1	SIZE A4		DRAWN BY Robin	DATE 29/NOV/14	THIS DRAWING CONTAINS INFORMATION THAT IS PROPRIETARY TO TXGA INDUSTRIAL ELECTRONICS(S.Z)CO.,LTD AND SHOULD NOT BE USED WITHOUT WRITTEN PERMISSION		REV 0	SHEET NO. 1/2

1 2 3 4 5 6 7 8

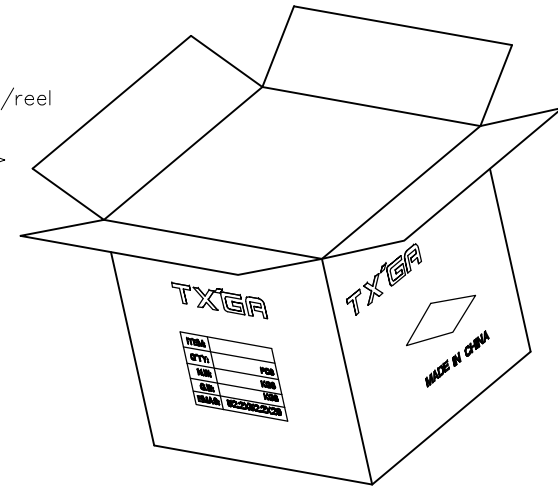
1 2 3 4 5 6 7 8

REV	LOCATIONS	DESCRIPTION	DATE	REVISER	APPD

A  
B  
C  
D  
E  
F



17,000 pcs/reel



<p>THIRD ANGLE PROJECTION</p>	GENERAL TOLERANCES (UNLESS SPECIFIED)		APPROVE BY FRANK	DATE 29/NOV/14	PART NO. FT20011-F2H	ITEM NO. FT20011	<p>Leader Of Industry</p>
	DESIGN UNITS Inch (metric)	X.±.012(0.30)	X.±5'	CHECKED BY FAN	DATE 29/NOV/14	TITLE Wire to Board Pitch 2.0mm(Terminal)	
SCALE 5:1	SIZE A4	X.XX±.006(0.15)	.XX'±1'	DRAWN BY Robin	DATE 29/NOV/14	THIS DRAWING CONTAINS INFORMATION THAT IS PROPRIETARY TO TXGA INDUSTRIAL ELECTRONICS(S.Z)CO.,LTD AND SHOULD NOT BE USED WITHOUT WRITTEN PERMISSION	
		X.XXX±.004(0.10)	.XXX'±0.5'			REV 0	SHEET NO. 2/2

1 2 3 4 5 6 7 8