

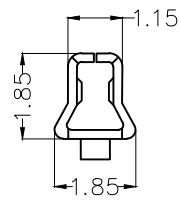
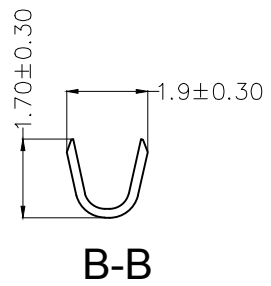
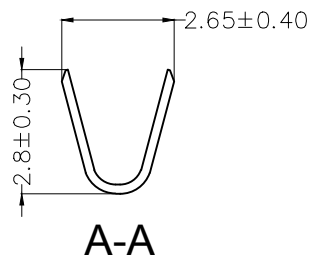
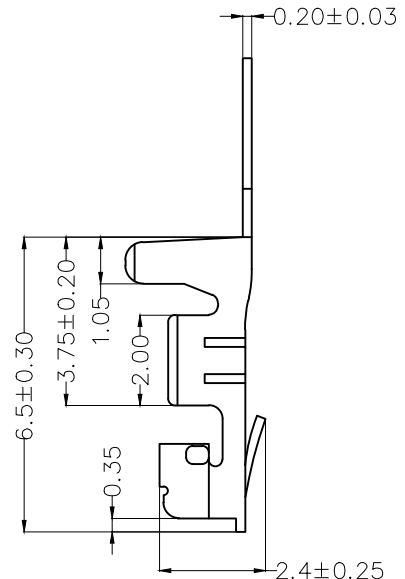
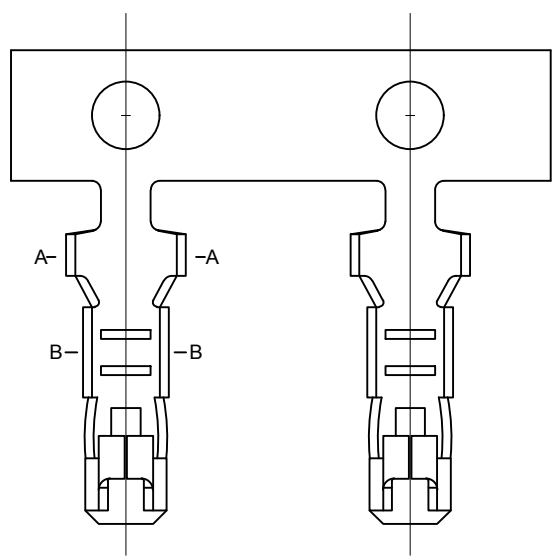
1 2 3 4 5 6 7 8

REV	LOCATIONS	DESCRIPTION	DATE	REVISER	APPD

SPECIFICATIONS

Electrical
 Current Rating: 3A AC(rms)/DC
 Contact Resistance: 20 mΩ Max.
 Insulation Resistance: 1000 MΩ Min.
 Withstanding Voltage: 1000V AC r.m.s
 Temperature Range-Operating: -25°C~+85°C

Material and Plating
 Material: Phosphor Bronze C5191
 Plating: Tin-Plated/Gold Plated
 Wire Range: 28AWG~22AWG
 Applicable (Housing): FHG25020 Series
 Minimum Order Quantity : 11,000 pcs



Ordering Information

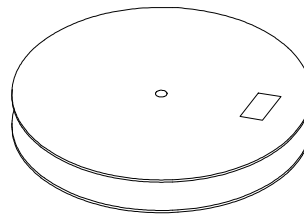
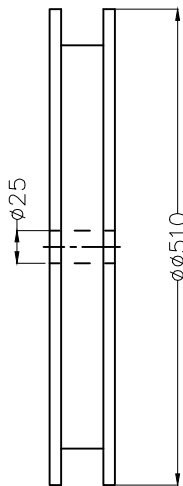
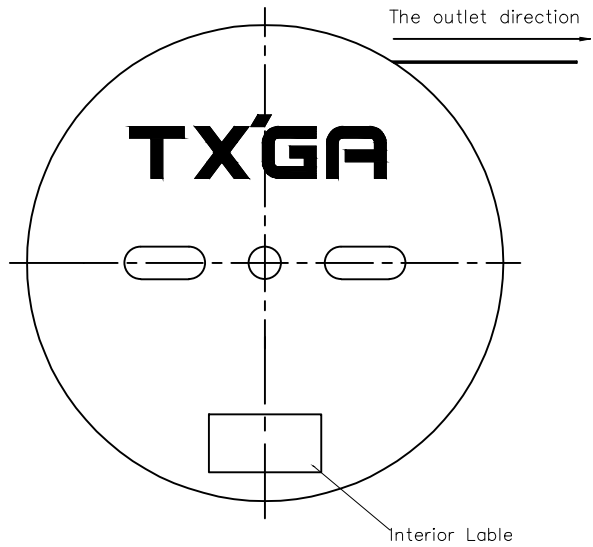
FT 250 20 - F X H
 1 2 3 4 5 6

1	Category	2	Series Number	3	Distinction No.	4	Type	5	Plating	6	Packaging
	FT-Terminal		250-Pitch2.50mm		20		F-Female		1-Gold Plated 2-Tin Plated		H-Paper Axis

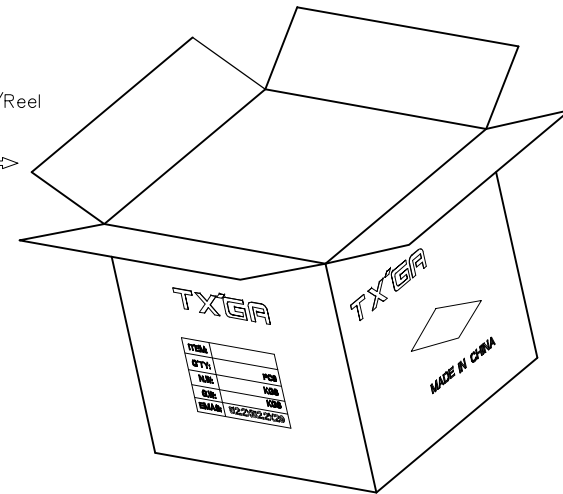
<p>THIRD ANGLE PROJECTION</p>	GENERAL TOLERANCES (UNLESS SPECIFIED)		APPROVE BY	DATE	PART NO.	ITEM NO.	<p>Building Technology Cornerstone</p>
	X. ±0.30	X.* ±5°	LEO	01/JUL/13	FT25020-FXH	FT25020	
	X.X ±0.20	X.X* ±2°	CHECKED BY	DATE	TITLE		
	X.XX ±0.15	X.XX* ±1°	GISELLE	01/JUL/13	Wire to Board Pitch 2.50mm(Terminal)		
SCALE	SIZE	X.XXX ±0.10	X.XXX* ±0.5°	DRAWN BY	DATE	THIS DRAWING CONTAINS INFORMATION THAT IS PROPRIETARY TO TXGA INDUSTRIAL ELECTRONICS(S.Z)CO.,LTD AND SHOULD NOT BE USED WITHOUT WRITTEN PERMISSION	
5:1	A4			MATT	01/JUL/13	REV 0	SHEET NO. 1/2

1 2 3 4 5 6 7 8

REV	LOCATIONS	DESCRIPTION	DATE	REVISER	APPD



11,000 pcs/Reel



 THIRD ANGLE PROJECTION	GENERAL TOLERANCES (UNLESS SPECIFIED)		APPROVE BY LEO	DATE 01/JUL/13	PART NO. FT25020-FXH	ITEM NO. FT25020	 Building Technology Cornerstone	
	DESIGN UNITS METRIC(mm)	X. ± 0.30	X.* $\pm 5^{\circ}$	CHECKED BY GISELLE	DATE 01/JUL/13	TITLE Wire to Board Pitch 2.50mm(Terminal)		REV 0
SCALE 5:1	SIZE A4	X.XX ± 0.15	X.XX* $\pm 1^{\circ}$	DRAWN BY MATT	DATE 01/JUL/13	THIS DRAWING CONTAINS INFORMATION THAT IS PROPRIETARY TO TXGA INDUSTRIAL ELECTRONICS(S.Z)CO.,LTD AND SHOULD NOT BE USED WITHOUT WRITTEN PERMISSION		
		X.XXX ± 0.10	X.XXX* $\pm 0.5^{\circ}$					