

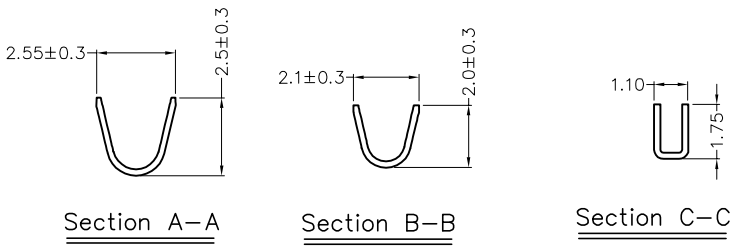
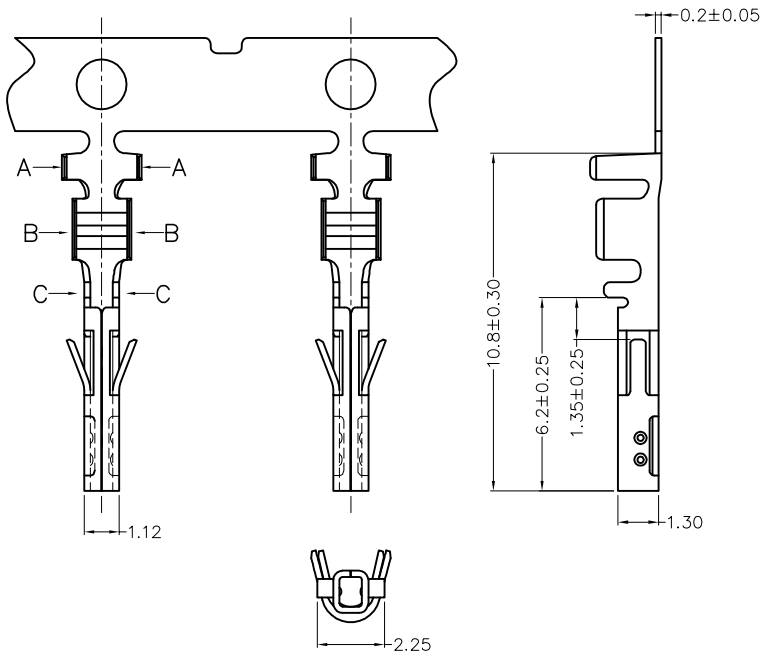
A
B
C
D
E
F

12345678

REV	LOCATIONS	DESCRIPTION	DATE	REVISER	APPD
1		New Drawing	14/SEP/23	MATT	LEO

Notes:
Material: Phosphor Bronze
Plating: Tin plated/ Selective gold plated on contact area; nickel over all
Wire Range: 24AWG~20AWG
Applicable Housing: FHG30001 Series
Minimum Order Quantity : 12,000 PCS



A
B
C
D
E
F



Ordering Information

FT	300	01	—	F	X	H
1	2	3		4	5	6

1	Category FT—Terminal	2	Series Number 300—Pitch 3.00mm	3	Distinction No. 01	4	Type F—Female	5	Plating 2—Tin plated 5—Gold Flash on contact area, nickel over all	6	Packaging H—Paper Axis
---	-------------------------	---	-----------------------------------	---	-----------------------	---	------------------	---	---	---	---------------------------

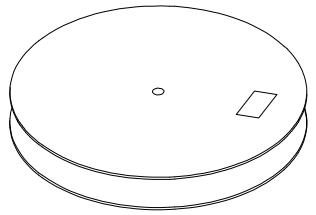
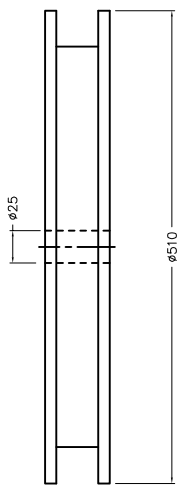
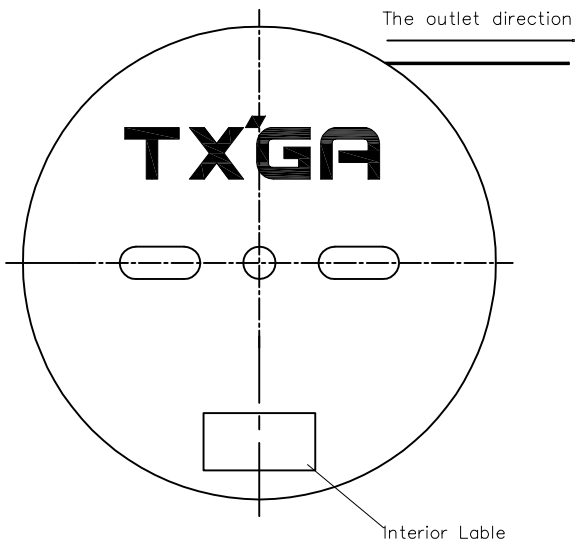
 THIRD ANGLE PROJECTION		GENERAL TOLERANCES (UNLESS SPECIFIED)		APPROVE BY FRANK	DATE 25/JUN/13	PART NO. FT30001—FXH	ITEM NO. FT30001	 Building Technology Cornerstone	
		X. ±0.30	X.* ±5°	CHECKED BY JACOB	DATE 25/JUN/13	TITLE Wire to Board Pitch 3.0mm(Terminal)			
DESIGN UNITS METRIC(mm)		X.X ±0.20	X.X* ±2°	DRAWN BY CHERRY	DATE 25/JUN/13	THIS DRAWING CONTAINS INFORMATION THAT IS PROPRIETARY TO TXGA INDUSTRIAL ELECTRONICS(S.Z)CO.,LTD AND SHOULD NOT BE USED WITHOUT WRITTEN PERMISSION			
SCALE 5:1	SIZE A4	X.XX ±0.15	X.XX* ±1°						
		X.XXX ±0.10	X.XXX* ±0.5°						

12345678

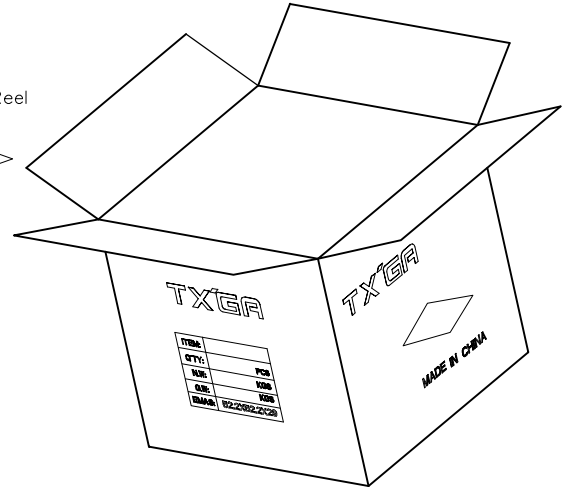
A
B
C
D
E
F

12345678



REV	LOCATIONS	DESCRIPTION	DATE	REVISER	APPD



12,000Pcs/Reel



A
B
C
D
E
F

 THIRD ANGLE PROJECTION		GENERAL TOLERANCES (UNLESS SPECIFIED)		APPROVE BY FRANK	DATE 25/JUN/13	PART NO. FT30001-FXH	ITEM NO. FT30001	 Building Technology Cornerstone	
DESIGN UNITS METRIC(mm)		X. ±0.30	X.* ±5°	CHECKED BY JACOB	DATE 25/JUN/13	TITLE Wire to Board Pitch 3.0mm(Terminal)	REV 1 SHEET NO. 2/2		
SCALE 5:1	SIZE A4	X.XX ±0.15	X.XX* ±1°	DRAWN BY CHERRY	DATE 25/JUN/13	THIS DRAWING CONTAINS INFORMATION THAT IS PROPRIETARY TO TXGA INDUSTRIAL ELECTRONICS(S.Z)CO.,LTD AND SHOULD NOT BE USED WITHOUT WRITTEN PERMISSION			
		X.XXX ±0.10	X.XXX* ±0.5°						

12345678