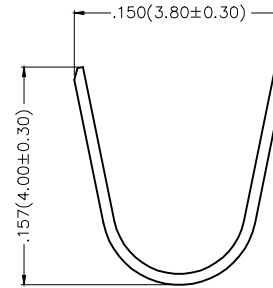
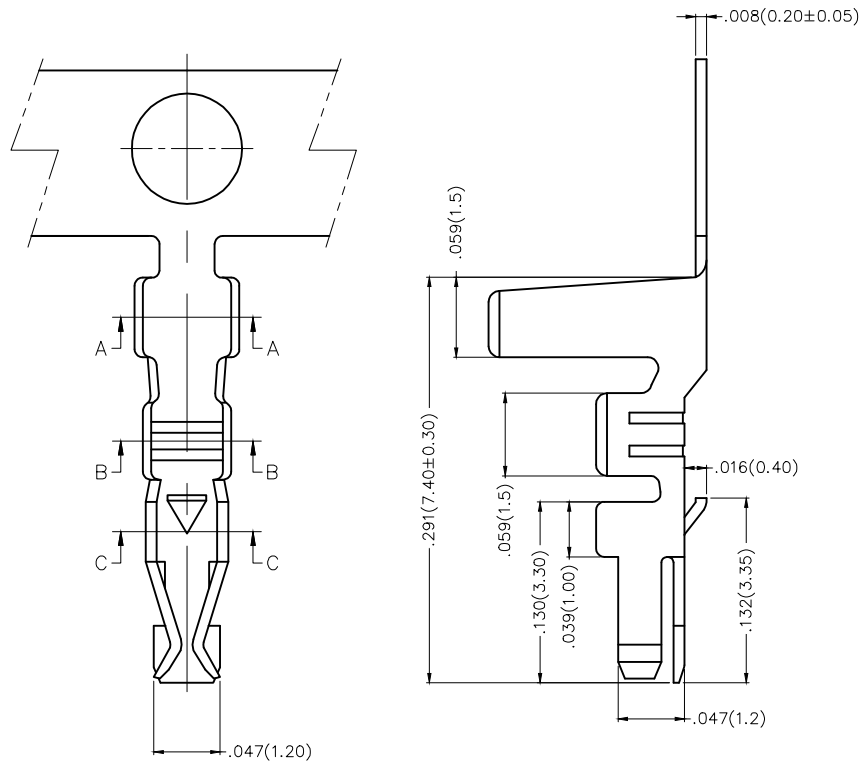
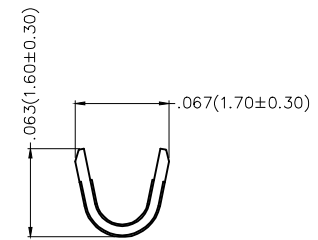


REV	LOCATIONS	DESCRIPTION	DATE	REVISER	APPD

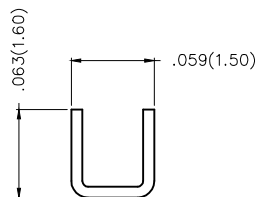
Electrical
Material: Phosphor Bronze
Plating: Tin-Plated
Wire Range: 28AWG~32AWG
Applicable Housing: FHG40001 Series
Minimum Order Quantity : 4,000 PCS



Section A-A



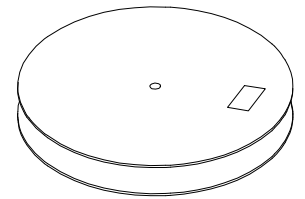
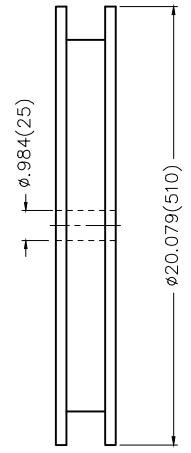
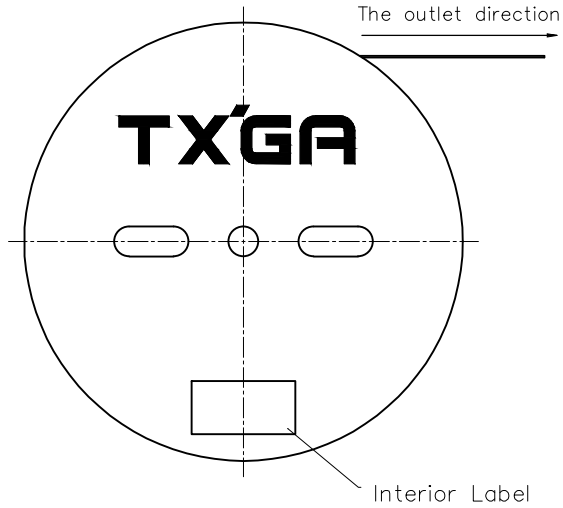
Section B-B



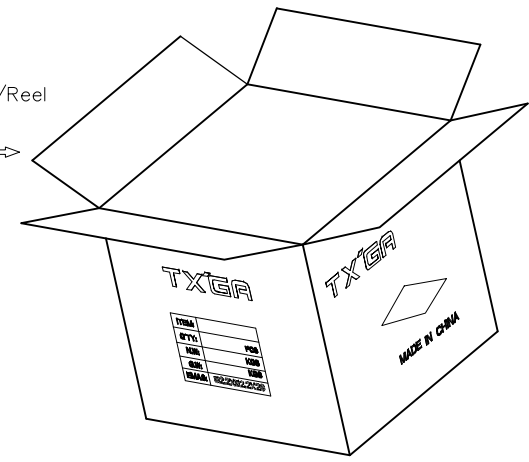
Section C-C

 THIRD ANGLE PROJECTION	GENERAL TOLERANCES (UNLESS SPECIFIED)		APPROVE BY FRANK	DATE 18/JUN/13	PART NO. FT40001-F2H	ITEM NO. FT40001	 Leader Of Industry	
	DESIGN UNITS Inch (metric)	X.±.012(0.30) X.X±.008(0.20)	X.±5° .X'±2'	CHECKED BY CHERRY	DATE 18/JUN/13	TITLE Wire to Wire Pitch 4mm(Terminal)		REV 0
SCALE 5:1	SIZE A4	X.XX±.006(0.15) X.XXX±.004(0.10)	.XX'±1° .XXX'±0.5°	DRAWN BY KATE	DATE 18/JUN/13	THIS DRAWING CONTAINS INFORMATION THAT IS PROPRIETARY TO TXGA INDUSTRIAL ELECTRONICS(S.Z)CO.,LTD AND SHOULD NOT BE USED WITHOUT WRITTEN PERMISSION		

REV	LOCATIONS	DESCRIPTION	DATE	REVISER	APPD



4,000 Pcs/Reel



 THIRD ANGLE PROJECTION	GENERAL TOLERANCES (UNLESS SPECIFIED)		APPROVE BY FRANK	DATE 18/JUN/13	PART NO. FT40001-F2H	ITEM NO. FT40001	 Leader Of Industry
	DESIGN UNITS Inch (metric)	X.X±.012(0.30)	.X'±5'	CHECKED BY CHERRY	DATE 18/JUN/13	TITLE Wire to Wire Pitch 4mm(Terminal)	
SCALE 5:1	SIZE A4	X.XX±.006(0.15)	.XX±1"	DRAWN BY KATE	DATE 18/JUN/13	THIS DRAWING CONTAINS INFORMATION THAT IS PROPRIETARY TO TXGA INDUSTRIAL ELECTRONICS(S.Z)CO.,LTD AND SHOULD NOT BE USED WITHOUT WRITTEN PERMISSION	
		X.XXX±.004(0.10)	.XXX'±0.5'			REV 0	SHEET NO. 2/2