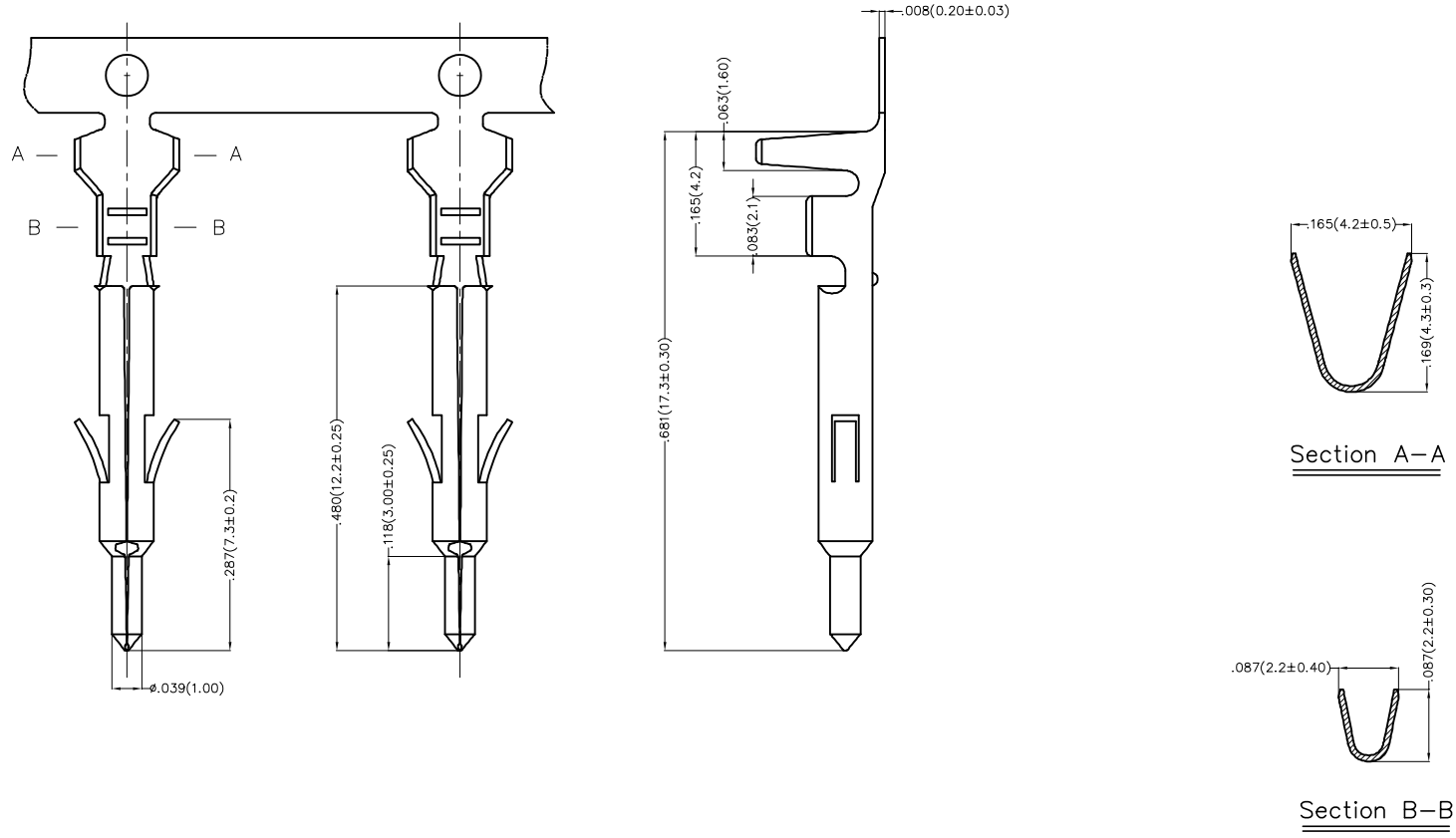


REV	LOCATIONS	DESCRIPTION	DATE	REVISER	APPD

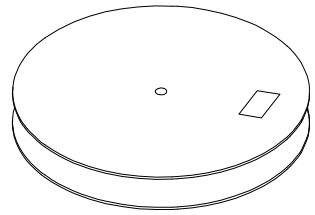
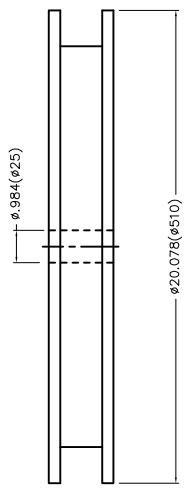
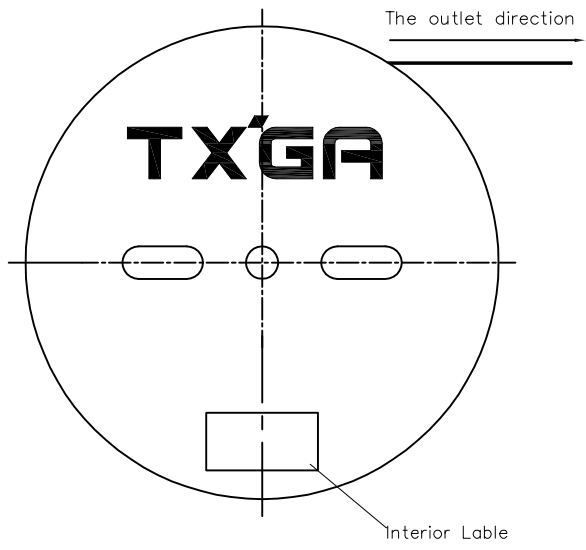
Electrical  
Material: Phosphor Bronze  
Plating: Tin-Plated  
Wire Range: 18AWG~22AWG  
Insulation Nom. Dia:  $\phi 0.098$ " Max ( $\phi 1.5 \sim \phi 2.5$ mm)  
Applicable Housing: FHG41404 Series  
Minimum Order Quantity : 4,500 pcs



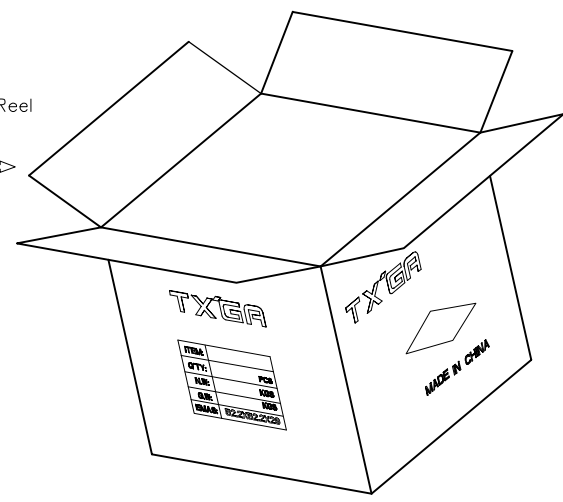
 THIRD ANGLE PROJECTION	GENERAL TOLERANCES (UNLESS SPECIFIED)		APPROVE BY FRANK	DATE 15/AUG/22	PART NO. FT41404-M2H	ITEM NO. FT41404	 Leader Of Industry
	DESIGN UNITS Inch (metric)	X.±.012(0.30)	X.*±5'	CHECKED BY CHERRY	DATE 15/AUG/22	TITLE Wire to Board Pitch 4.14mm(Terminal)	
SCALE 5:1	SIZE A4	X.XX±.006(0.15)	.XX'±1'	DRAWN BY MATT	DATE 15/AUG/22	THIS DRAWING CONTAINS INFORMATION THAT IS PROPRIETARY TO TXGA INDUSTRIAL ELECTRONICS(S.Z)CO.,LTD AND SHOULD NOT BE USED WITHOUT WRITTEN PERMISSION	
		X.XXX±.004(0.10)	.XXX'±0.5'			REV 0	SHEET NO. 1/2

1 2 3 4 5 6 7 8

REV	LOCATIONS	DESCRIPTION	DATE	REVISER	APPD



4,500 Pcs/Reel



A  
B  
C  
D  
E  
F

A  
B  
C  
D  
E  
F

 THIRD ANGLE PROJECTION	GENERAL TOLERANCES (UNLESS SPECIFIED)		APPROVE BY FRANK	DATE 15/AUG/22	PART NO. FT41404-M2H	ITEM NO. FT41404	 Leader Of Industry
	DESIGN UNITS Inch (metric)	X.±.012(0.30)	X.±5'	CHECKED BY CHERRY	DATE 15/AUG/22	TITLE Wire to Board Pitch 4.14mm(Terminal)	
SCALE 5:1	SIZE A4	X.XX±.006(0.15)	.XX±1'	DRAWN BY MATT	DATE 15/AUG/22	THIS DRAWING CONTAINS INFORMATION THAT IS PROPRIETARY TO TXGA INDUSTRIAL ELECTRONICS(S.Z)CO.,LTD AND SHOULD NOT BE USED WITHOUT WRITTEN PERMISSION	
		X.XXX±.004(0.10)	.XXX±0.5'			REV 0	SHEET NO. 2/2

1 2 3 4 5 6 7 8