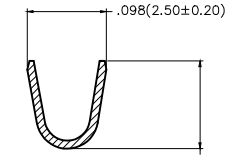
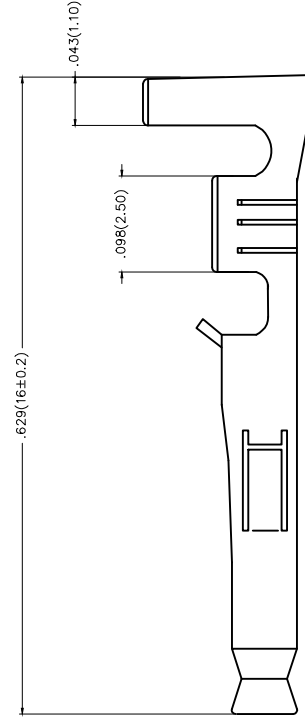
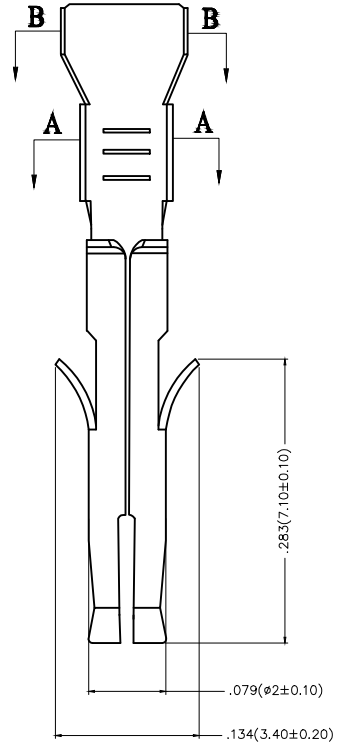


1 2 3 4 5 6 7 8

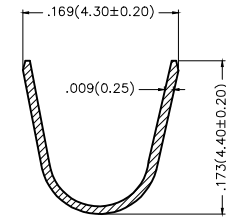
| REV | LOCATIONS | DESCRIPTION | DATE | REVISER | APPD |
|-----|-----------|---------------------------------------|-----------|---------|-------|
| 1 | △ | MOQ: Change 4,000 into 4,500 pcs/reel | 09/AUG/18 | KATE | FRANK |

Notes:

- 1.Material: Phosphor Bronze C5191
- 2.Plating: Tin-Plated
- 3.Wire Range: 16AWG~24AWG
- 4.Insulation O.D.106(φ2.70mm Max)
- 5.Applicable Housing: FHG45004Series
- 6.Minimum Order Quantity 4,500 PCS



A-A



B-B

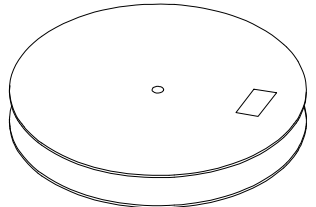
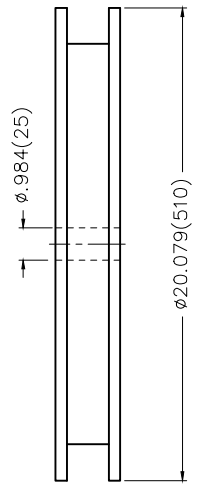
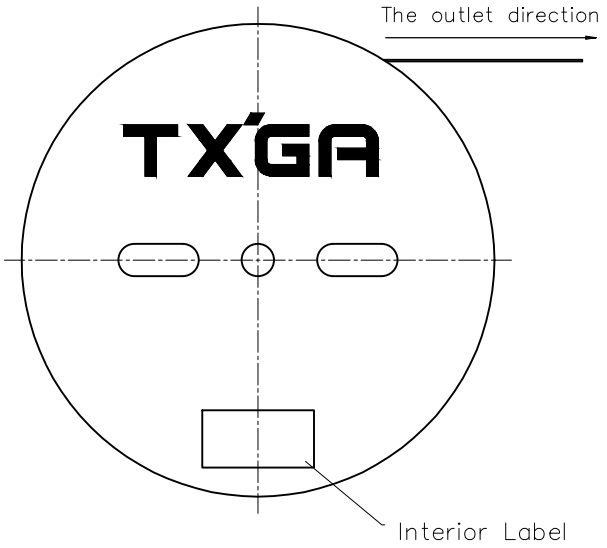
A
B
C
D
E
F

A
B
C
D
E
F

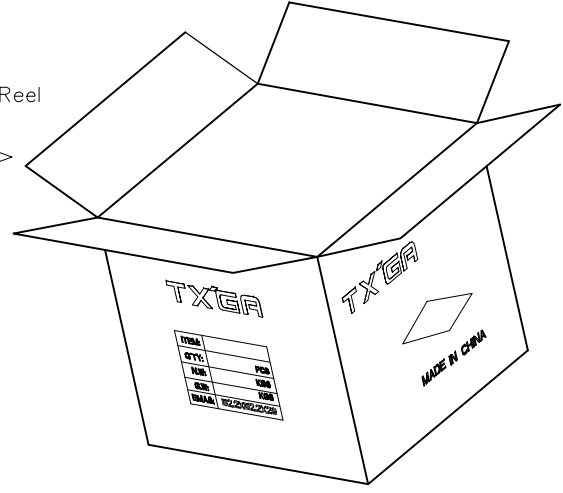
| | | | | | | | |
|-------------------------------|--|------------|------------|-----------|--|----------|------------------------|
| THIRD ANGLE PROJECTION | GENERAL TOLERANCES (UNLESS SPECIFIED) | | APPROVE BY | DATE | PART NO. | ITEM NO. | Leader Of Industry |
| | X.±.012(0.30) | X'±5' | FRANK | 18/AUG/15 | FT45004-F2H | FT45004 | |
| DESIGN UNITS Inch (metric) | X.X±.008(0.20) | .X'±2' | CHECKED BY | DATE | TITLE | | REV 1 SHEET NO. 1/2 |
| SCALE 5:1 | X.XX±.006(0.15) | .XX'±1' | CHERRY | 18/AUG/15 | Wire to Board Pitch 4.5mm(Terminal) | | |
| SIZE A4 | X.XXX±.004(0.10) | .XXX'±0.5' | DRAWN BY | DATE | THIS DRAWING CONTAINS INFORMATION THAT IS PROPRIETARY TO TXGA INDUSTRIAL ELECTRONICS(S.Z)CO.,LTD AND SHOULD NOT BE USED WITHOUT WRITTEN PERMISSION | | |
| | | | KEVIN | 18/AUG/15 | | | |

1 2 3 4 5 6 7 8

| REV | LOCATIONS | DESCRIPTION | DATE | REVISER | APPD |
|-----|-----------|-------------|------|---------|------|
| | | | | | |



4,500 Pcs/Reel



| | | | | | | | | |
|-------------------------------|--|------------------|---------------------|----------------------|-------------------------|--|------------------------|---------------|
| THIRD ANGLE PROJECTION | GENERAL TOLERANCES (UNLESS SPECIFIED) | | APPROVE BY FRANK | DATE 18/AUG/15 | PART NO. FT45004-F2H | ITEM NO. FT45004 | Leader Of Industry | |
| | DESIGN UNITS Inch (metric) | X.±.012(0.30) | X.±5' | CHECKED BY CHERRY | DATE 18/AUG/15 | TITLE Wire to Board Pitch 4.5mm(Terminal) | | |
| | SCALE 5:1 | X.XX±.008(0.20) | .X'±2' | DRAWN BY CHERRY | DATE 18/AUG/15 | THIS DRAWING CONTAINS INFORMATION THAT IS PROPRIETARY TO TXGA INDUSTRIAL ELECTRONICS(S.Z)CO.,LTD AND SHOULD NOT BE USED WITHOUT WRITTEN PERMISSION | | |
| | SIZE A4 | X.XX±.006(0.15) | .XX'±1' | | | | REV 1 | SHEET NO. 2/2 |
| | | X.XXX±.004(0.10) | .XXX'±0.5' | | | | | |