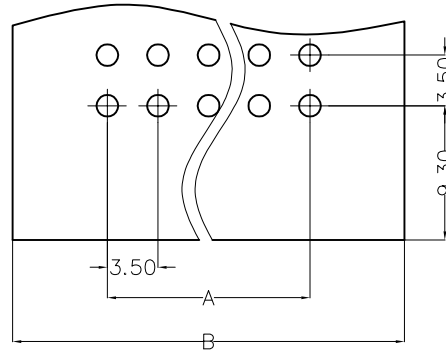
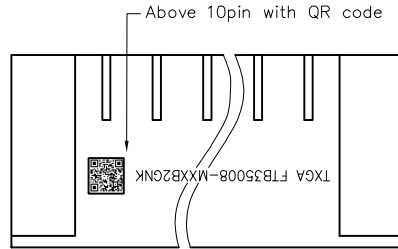
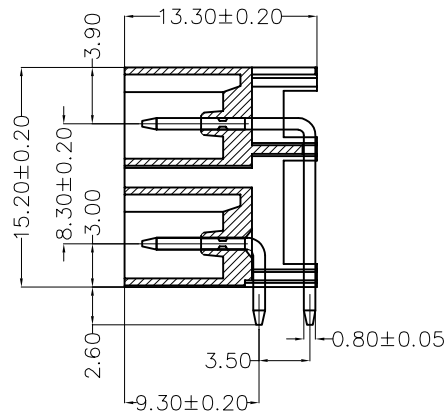
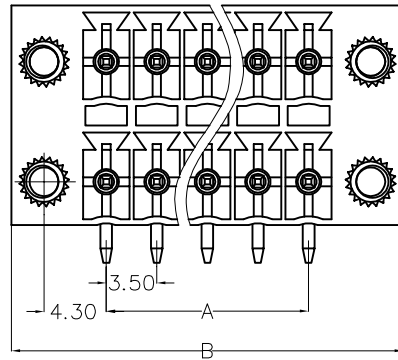


REV	LOCATIONS	DESCRIPTION	DATE	REVISER	APPD



Recommended P.C.Board Layout



Circuits (n)	Part No.	Dimensions (mm)	
		A	B
2	FTB35008-M02B2GNK	0	13.10
4	FTB35008-M04B2GNK	3.50	16.60
6	FTB35008-M06B2GNK	7.00	20.10
8	FTB35008-M08B2GNK	10.50	23.60
10	FTB35008-M10B2GNK	14.00	27.10
12	FTB35008-M12B2GNK	17.50	30.60
14	FTB35008-M14B2GNK	21.00	34.10
16	FTB35008-M16B2GNK	24.50	37.60
18	FTB35008-M18B2GNK	28.00	41.10
20	FTB35008-M20B2GNK	31.50	44.60
22	FTB35008-M22B2GNK	35.00	48.10
24	FTB35008-M24B2GNK	38.50	51.60

Ordering Information

FTB 350 08 — M XX B 2 GN K
1 2 3 4 5 6 7 8 9

1 Category FTB-Terminal Block	2 Series Number 350-Pitch3.50mm	3 Distinction No. 08	4 Type M-Male
5 Circuits XX	6 Entry Angle B-90° Angle	7 Material-Resin 2-PA66	8 Color-Resin GN-Green
		9 Packaging K-Bag	

SPECIFICATIONS

Electrical


Current Rating:12A AC(rms)/DC
Voltage Rating:300V AC(rms)/DC
Contact Resistance:20 mΩ Max
Insulation Resistance:1000 MΩ Min
Withstanding Voltage:2500V AC r.m.s

Environmental

Operating Temperature: -40°C~+105°C

Material and plating

Housing:PA66(UL 94V-0)
Contacts:Copper Alloy/Tin plated
Nut:Copper Alloy

THIRD ANGLE PROJECTION	GENERAL TOLERANCES (UNLESS SPECIFIED)		APPROVE BY LEO	DATE 30/JAN/23	PART NO. FTB35008-MXXB2GNK	ITEM NO. FTB35008	 Building Technology Cornerstone
	DESIGN UNITS METRIC	X. ±0.30	X.* ±5°	CHECKED BY GISELLE	DATE 30/JAN/23	TITLE Terminal Block Pitch 3.5mm 90° Angle	
SCALE 5:1	SIZE A4	X.XX ±0.15	X.XX* ±1°	DRAWN BY YYQ	DATE 30/JAN/23	THIS DRAWING CONTAINS INFORMATION THAT IS PROPRIETARY TO TXGA INDUSTRIAL ELECTRONICS(S.Z)CO.,LTD AND SHOULD NOT BE USED WITHOUT WRITTEN PERMISSION	
		X.XXX ±0.10	X.XXX* ±0.5°				