

1 2 3 4 5 6 7 8

REV	LOCATIONS	DESCRIPTION	DATE	REVISER	APPD
1		Structural changes	25/MAY/21	KATE	CHERRY
2		Add marking code	02/Apr/25	NICK	LEO

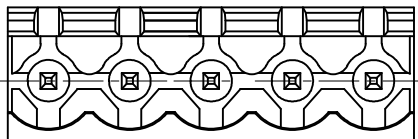
SPECIFICATIONS

Electrical

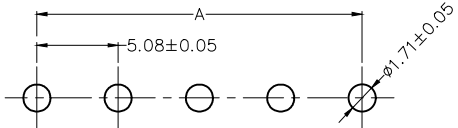
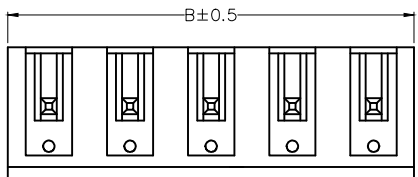
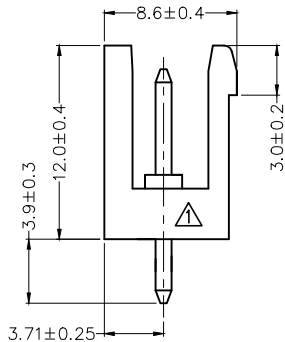
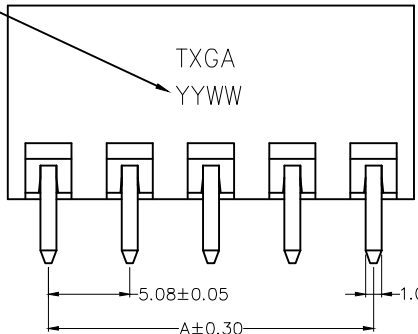
Current Rating: 10A AC(rms)/DC
 Voltage Rating: 300V AC(rms)/DC
 Insulation Resistance: 500 MΩ Min./DC 500V
 Dielectric Voltage: 2500V AC /1 Min.
 Surge Voltage: 4000V (All 5 are negative)
 Temperature Range-Operating: -40°C~+105°C

Material and Plating

Housing: PA66 (UL 94V-0)
 Contacts: Brass/ Tin plated



Date Code



Recommended P.C.Board Layout

General Tolerances: ±0.05

Circuits (n)	Part No.	Dimensions(in/mm)	
		A	B
2	FTB50808-F02S2N1B	.200(5.08)	.400(10.16)
3	FTB50808-F03S2N1B	.400(10.16)	.600(15.24)
4	FTB50808-F04S2N1B	.600(15.24)	.800(20.32)
5	FTB50808-F05S2N1B	.800(20.32)	1.000(25.40)
6	FTB50808-F06S2N1B	1.000(25.40)	1.200(30.48)
7	FTB50808-F07S2N1B	1.200(30.48)	1.400(35.56)
8	FTB50808-F08S2N1B	1.400(35.56)	1.600(40.64)
9	FTB50808-F09S2N1B	1.600(40.64)	1.800(45.72)
10	FTB50808-F10S2N1B	1.800(45.72)	2.000(50.80)

	GENERAL TOLERANCES (UNLESS SPECIFIED)		APPROVE BY	DATE
	X. ±0.30	X.* ±5°	FRANK	07/APR/20
DESIGN UNITS Metric(mm)	X.X ±0.20	X.X* ±2°	CHECKED BY	DATE
SCALE 5:1	X.XX ±0.15	X.XX* ±1°	CHERRY	07/APR/20
SIZE A4	X.XXX ±0.10	X.XXX* ±0.5°	DRAWN BY	DATE
			KATE	07/APR/20

PART NO.	ITEM NO.	
FTB50808-FXXS2N1B	FTB50808	
TITLE		Leader Of Industry
Terminal Block Pitch 5.08mm 180° Vertical (DIP)		REV 2 SHEET NO. 1/1
THIS DRAWING CONTAINS INFORMATION THAT IS PROPRIETARY TO TXGA INDUSTRIAL ELECTRONICS(S.Z)CO.,LTD AND SHOULD NOT BE USED WITHOUT WRITTEN PERMISSION		

1 2 3 4 5 6 7 8