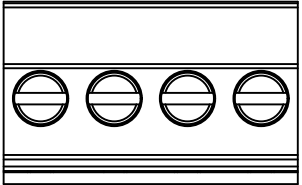


1 2 3 4 5 6 7 8

REV	LOCATIONS	DESCRIPTION	DATE	REVISER	APPD

A



B

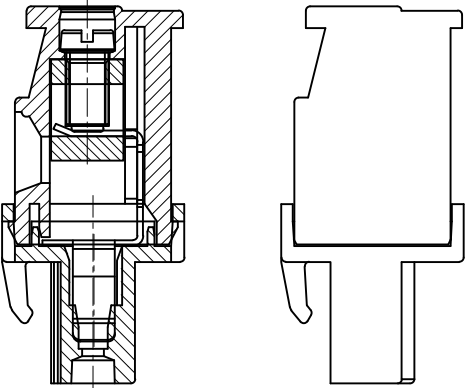
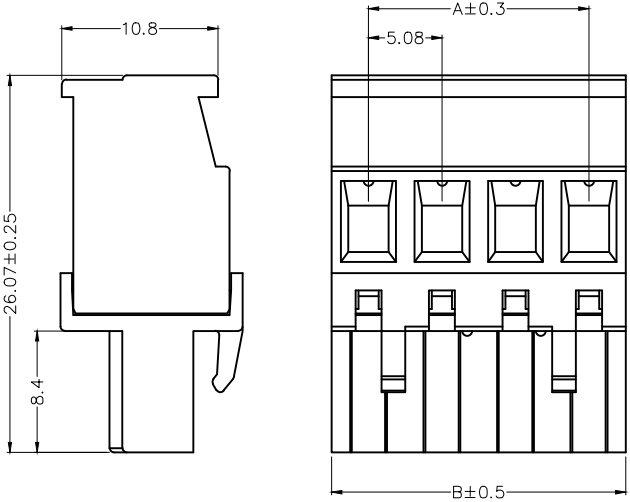
SPECIFICATIONS

Electrical
 Current Rating: 15A AC(rms)/DC
 Voltage Rating: 300V AC(rms)/DC
 Insulation Resistance: 5000 MΩ Min./DC 1000V
 Dielectric Voltage: 2500V AC /1 Min.
 Temperature Range—Operating: -45°C~+105°C
 Wire range: 28~12AWG (1.0~2.5mm²)
 Max torque value: M3.0 6.0kgf.cm

C

Material and Plating
 Housing: PA66 (UL 94V-0)
 Contacts: Bronze/ Tin plated
 Clamp: Brass/ Nickel plated
 Screw: M2.5 Steel/ Zinc plated

D



E

Circuits (n)	Part No.	Dimensions(in/mm)	
		A	B
2	FTB50809-M02B2GNB	.200(5.08)	.400(10.16)
3	FTB50809-M03B2GNB	.400(10.16)	.600(15.24)
4	FTB50809-M04B2GNB	.600(15.24)	.800(20.32)
5	FTB50809-M05B2GNB	.800(20.32)	1.000(25.40)
6	FTB50809-M06B2GNB	1.000(25.40)	1.200(30.48)
7	FTB50809-M07B2GNB	1.200(30.48)	1.400(35.56)
8	FTB50809-M08B2GNB	1.400(35.56)	1.600(40.64)
9	FTB50809-M09B2GNB	1.600(40.64)	1.800(45.72)
10	FTB50809-M10B2GNB	1.800(45.72)	2.000(50.80)

F

<p>THIRD ANGLE PROJECTION</p>	GENERAL TOLERANCES (UNLESS SPECIFIED)		APPROVE BY	DATE	PART NO.	ITEM NO.	<p>Leader Of Industry</p>	
	X. ±0.30	X.* ±5°	FRANK	06/APR/21	FTB50809-MXXB2GNB	FTB50809		
	DESIGN UNITS Metric	X.X ±0.20	X.X* ±2°	CHECKED BY	DATE	TITLE		
	SCALE 5:1	X.XX ±0.15	X.XX* ±1°	CHERRY	06/APR/21	Terminal Block Pitch 5.08mm 90° Angle (Plug)		
SIZE A4	X.XXX ±0.10	X.XXX* ±0.5°	DRAWN BY	DATE	THIS DRAWING CONTAINS INFORMATION THAT IS PROPRIETARY TO TXGA INDUSTRIAL ELECTRONICS(S.Z)CO.,LTD AND SHOULD NOT BE USED WITHOUT WRITTEN PERMISSION		REV 0	SHEET NO. 1/1
			KATE	06/APR/21				

1 2 3 4 5 6 7 8