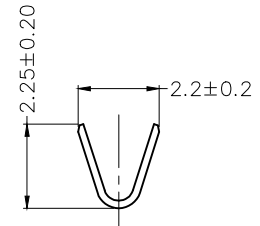
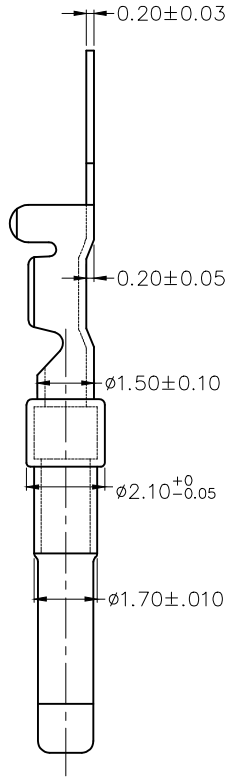
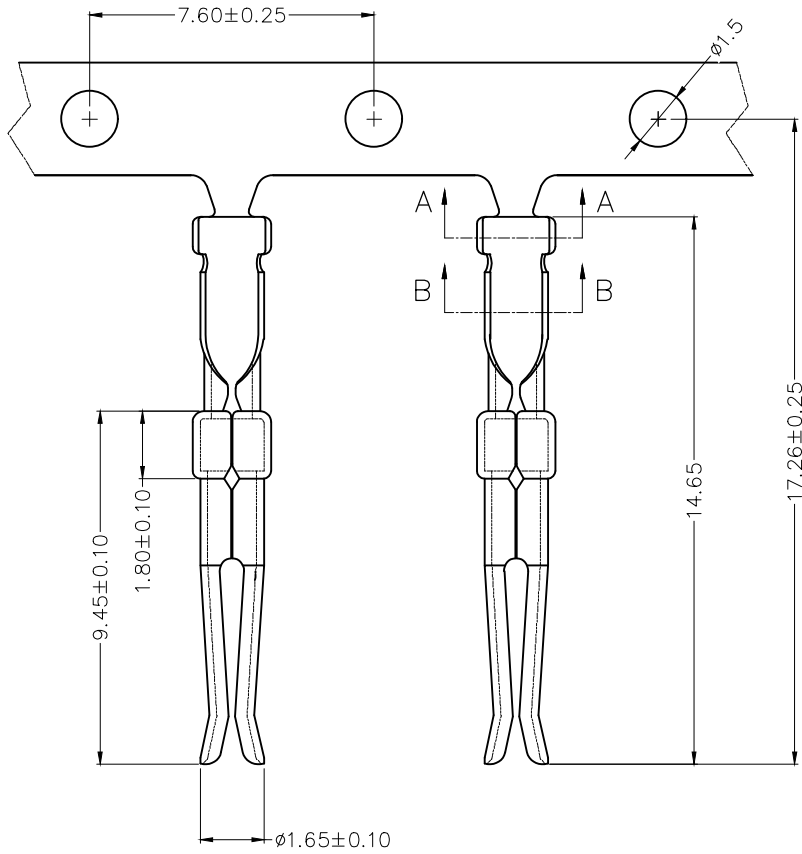


1 2 3 4 5 6 7 8

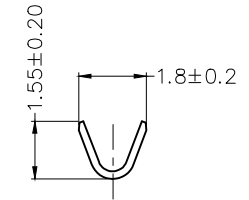
REV	LOCATIONS	DESCRIPTION	DATE	REVISER	APPD
1		New mould	09/AUG/21	KATE	CHERRY

Notes:

1. Material: Brass
2. Plating: Gold flash on contact area, Nickel plated over all
3. Wire Range: 20AWG~26AWG
4. Applicable Housing: FDBXX08-FOTS000XXX Series
5. Minimum Order Quantity 10,000 PCS



Section A-A

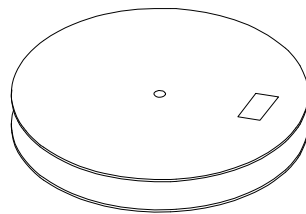
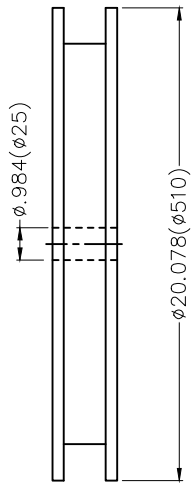
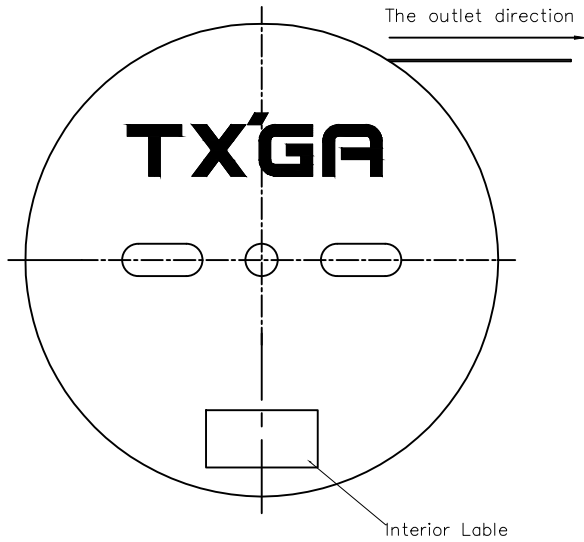


Section B-B

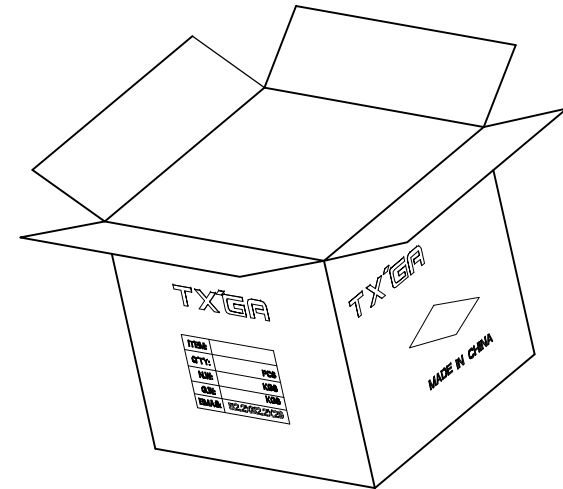
<p>THIRD ANGLE PROJECTION</p>	GENERAL TOLERANCES (UNLESS SPECIFIED)		APPROVE BY	DATE	PART NO.	ITEM NO.	<p>Leader Of Industry</p>
	X. ±0.30	X.* ±5°	FRANK	09/AUG/21	FTDB001-F3H	FTDB001	
	X.X ±0.20	X.X* ±2°	CHECKED BY	DATE	TITLE		
	X.XX ±0.15	X.XX* ±1°	CHERRY	09/AUG/21	D-SUB Female Terminal Series		
SCALE	SIZE	X.XXX ±0.10	X.XXX* ±0.5°	DRAWN BY	DATE	THIS DRAWING CONTAINS INFORMATION THAT IS PROPRIETARY TO TXGA INDUSTRIAL ELECTRONICS(S.Z)CO.,LTD AND SHOULD NOT BE USED WITHOUT WRITTEN PERMISSION	
5:1	A4			KATE	09/AUG/21	REV 1	SHEET NO. 1/2

1 2 3 4 5 6 7 8

REV	LOCATIONS	DESCRIPTION	DATE	REVISER	APPD



10,000 Pcs/Reel



<p>THIRD ANGLE PROJECTION</p>	GENERAL TOLERANCES (UNLESS SPECIFIED)		APPROVE BY	DATE	PART NO.	ITEM NO.	<p>Leader Of Industry</p>
	X. $\pm 0.30$	X.* $\pm 5^\circ$	FRANK	09/AUG/21	FTDB001-F3H	FTDB001	
DESIGN UNITS Metric	X.X $\pm 0.20$	X.X* $\pm 2^\circ$	CHECKED BY	DATE	TITLE		REV 1
SCALE 5:1	X.XX $\pm 0.15$	X.XX* $\pm 1^\circ$	CHERRY	09/AUG/21	D-SUB Female Terminal Series		
SIZE A4	X.XXX $\pm 0.10$	X.XXX* $\pm 0.5^\circ$	DRAWN BY	DATE	THIS DRAWING CONTAINS INFORMATION THAT IS PROPRIETARY TO TXGA INDUSTRIAL ELECTRONICS(S.Z)CO.,LTD AND SHOULD NOT BE USED WITHOUT WRITTEN PERMISSION		
			KATE	09/AUG/21			