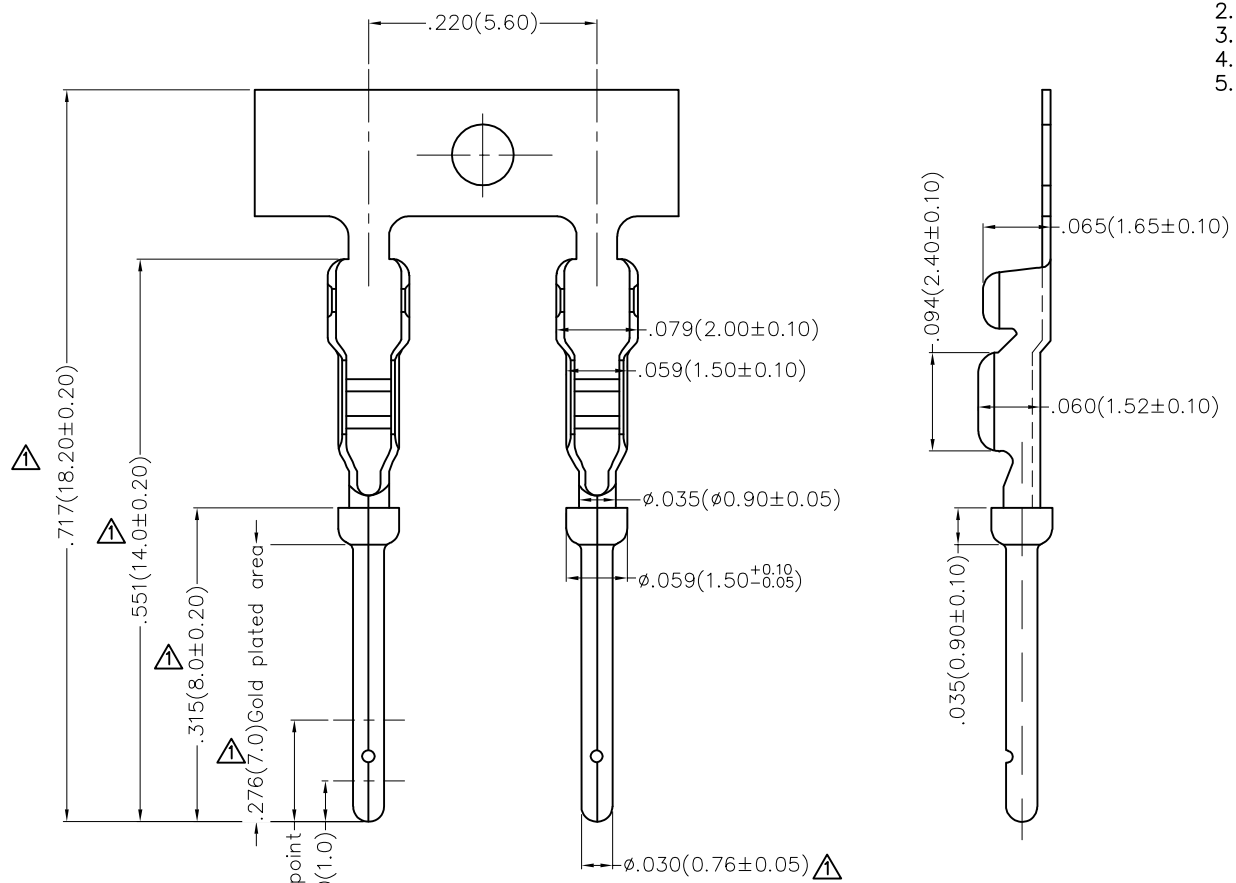


| REV | LOCATIONS | DESCRIPTION | DATE | REVISER | APPD |
|-----|-----------|-------------------------|-----------|---------|------|
| 1 | ▲ | Size and plating Change | 26/SEP/22 | MATT | LEO |

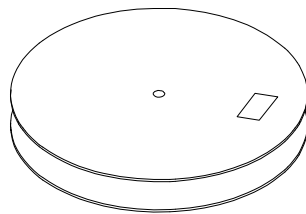
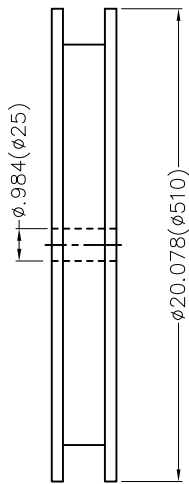
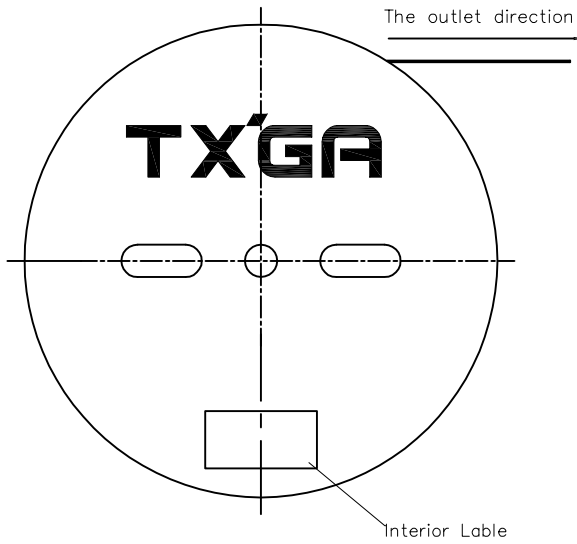
Notes:

1. Material: Copper alloy
2. Plating: Gold flash in contact area, Nickel plated over all
3. Wire Range: 28AWG~24AWG
4. Applicable Housing: FDBXX37-MOTS000XXKX Series
5. Minimum Order Quantity 15,000 PCS

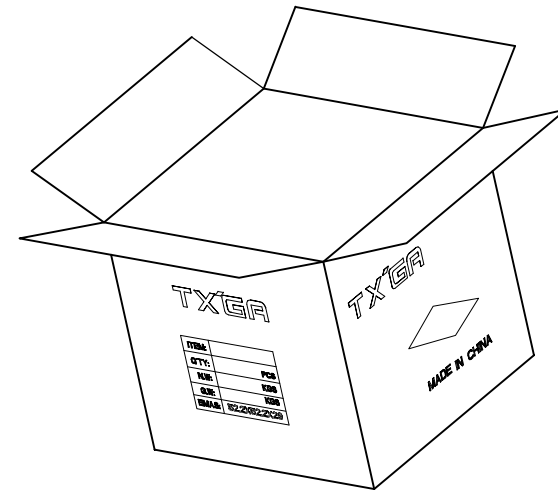


| | | | | | | | |
|----------------------------|---------------------------------------|------------|------------|-----------|--------------------------------|---------------|--|
| THIRD ANGLE PROJECTION | GENERAL TOLERANCES (UNLESS SPECIFIED) | | APPROVE BY | DATE | PART NO. | ITEM NO. | Leader Of Industry |
| | X.±.012(0.30) | X.±5' | FRANK | 28/DEC/18 | FTDB002-M3H | FTDB002 | |
| DESIGN UNITS | X.X±.008(0.20) | .X'±2" | CHECKED BY | DATE | TITLE | | THIS DRAWING CONTAINS INFORMATION THAT IS PROPRIETARY TO TXGA INDUSTRIAL ELECTRONICS(S.Z)CO.,LTD AND SHOULD NOT BE USED WITHOUT WRITTEN PERMISSION |
| Inch (metric) | X.XX±.006(0.15) | .XX'±1' | CHERRY | 28/DEC/18 | D-SUB Connector Terminal(Male) | | |
| SCALE | X.XXX±.004(0.10) | .XXX'±0.5' | DRAWN BY | DATE | REV 1 | SHEET NO. 1/2 | |
| 5:1 | | | KATE | 28/DEC/18 | | | |

| REV | LOCATIONS | DESCRIPTION | DATE | REVISER | APPD |
|-----|-----------|-------------|------|---------|------|
| | | | | | |



15,000 Pcs/Reel



| | | | | | | | |
|-------------------------------|--|----------------------|-----------------------|-------------------|--|---------------------|------------------------|
| THIRD ANGLE PROJECTION | GENERAL TOLERANCES (UNLESS SPECIFIED) | | APPROVE BY FRANK | DATE 28/DEC/18 | PART NO. FTDB002-F3H | ITEM NO. FTDB002 | Leader Of Industry |
| | X. ± 0.30 | X.* $\pm 5^{\circ}$ | CHECKED BY CHERRY | DATE 28/DEC/18 | TITLE D-SUB Connector Terminal(Male) | | |
| DESIGN UNITS Metric | X.X ± 0.20 | X.X* $\pm 2^{\circ}$ | DRAWN BY KATE | DATE 28/DEC/18 | THIS DRAWING CONTAINS INFORMATION THAT IS PROPRIETARY TO TXGA INDUSTRIAL ELECTRONICS(S.Z)CO.,LTD AND SHOULD NOT BE USED WITHOUT WRITTEN PERMISSION | | |
| SCALE 5:1 | SIZE A4 | X.XX ± 0.15 | X.XX* $\pm 1^{\circ}$ | X.XXX ± 0.10 | X.XXX* $\pm 0.5^{\circ}$ | | |