

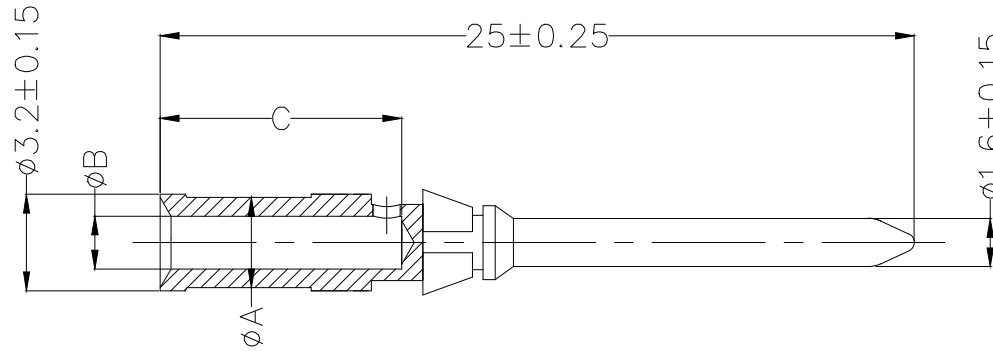
Part NO.	Wire Gauge		Dimensions		
	mm ²	AWG	A	B	C
FTH001-0100M4A0	0.14-0.37	26-22	2.6	0.90	8
FTH001-0100M4B0	0.5	20	2.6	1.10	8
FTH001-0100M4C0	0.75	18	2.6	1.30	8
FTH001-0100M4D0	1.0	18	2.6	1.45	8
FTH001-0100M4E0	1.5	16	3.0	1.75	8
FTH001-0100M4F0	2.5	14	3.2	2.25	6

REV	LOCATIONS	DESCRIPTION	DATE	REVISER	APPD

SPECIFICATIONS

Material

Body: Copper alloy, 1μm hard-silver plated
 Retaining Ring: Stainless steel
 Temperature Range-Operating: -40°C~+125°C
 Rated current: 10A
 Contact resistance: ≤3mΩ
 Mating cycles: ≥500 cycles



Ordering Information

FTH 001 - 0100 M 4 X 0
 1 2 3 4 5 6

1 Category FTH-Terminal 2 Distinction No. 001 3 Current 0100-Current 10A

3 Gender M-Male 5 Plating 4-Silver plated 6 Wire range(mm²)
 A-0.14~0.37mm²
 B-0.5mm² C-0.75mm²
 D-1.0mm² E-1.5mm²
 F-2.5mm²

 THIRD ANGLE PROJECTION DESIGN UNITS mm SCALE 5:1 SIZE A4	GENERAL TOLERANCES (UNLESS SPECIFIED)		APPROVE BY LEO	DATE 30/JUN/21	PART NO. FTH001-0100M4X0	ITEM NO. FTH001	 Building Technology Cornerstone REV 0 SHEET NO. 1/1
	X. ±0.30	X.* ±5'	CHECKED BY GISELLE	DATE 30/JUN/21	TITLE Heavy-duty connector 10A Crimp contacts!		
	X.X ±0.20	X.X' ±2'	DRAWN BY PYD	DATE 30/JUN/21	THIS DRAWING CONTAINS INFORMATION THAT IS PROPRIETARY TO TXGA INDUSTRIAL ELECTRONICS(S.Z)CO.,LTD AND SHOULD NOT BE USED WITHOUT WRITTEN PERMISSION		
	X.XX ±0.15	X.XX' ±1'					