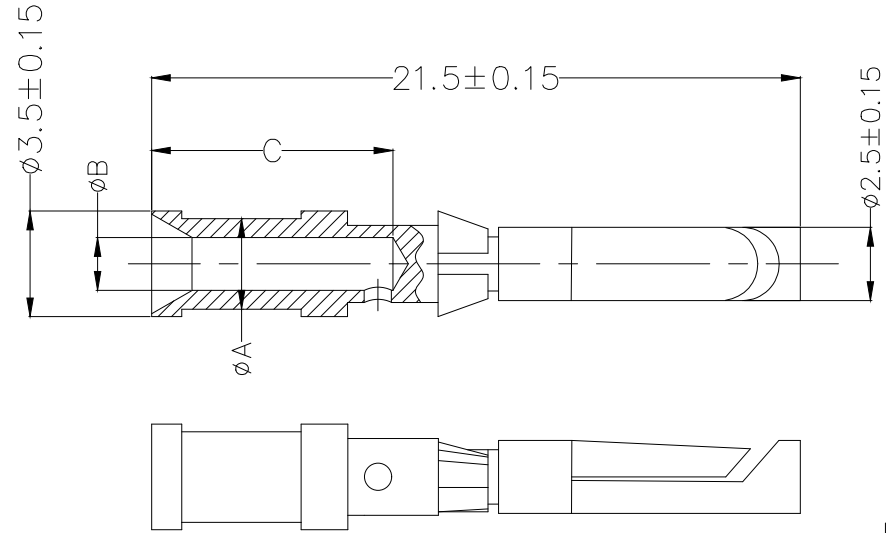


Part NO.	Wire Gauge		Dimensions		
	mm <sup>2</sup>	AWG	A	B	C
FTH002-0100F4A0	0.14-0.37	26-22	2.6	0.90	8
FTH002-0100F4B0	0.5	20	2.6	1.10	8
FTH002-0100F4C0	0.75	18	2.6	1.30	8
FTH002-0100F4D0	1.0	18	2.6	1.45	8
FTH002-0100F4E0	1.5	16	3.0	1.75	8
FTH002-0100F4F0	2.5	14	3.2	2.25	6

REV	LOCATIONS	DESCRIPTION	DATE	REVISER	APPD

**SPECIFICATIONS**  
Material  
Body: Copper alloy, 1μm hard-silver plated  
Retaining Ring: Stainless steel  
Temperature Range-Operating: -40°C~+125°C  
Rated current: 10A  
Contact resistance: ≤3mΩ  
Mating cycles: ≥500 cycles



**Ordering Information**

FTH 002 - 0100 F 4 X 0  
1 2 3 4 5 6

1	Category FTH-Terminal	2	Distinction No. 002	3	Current 0100-Current 10A
4	Gender F-Female	5	Plating 4-Silver plated	6	Wire range(mm <sup>2</sup> ) A-0.14~0.37mm <sup>2</sup> B-0.5mm <sup>2</sup> C-0.75mm <sup>2</sup> D-1.0mm <sup>2</sup> E-1.5mm <sup>2</sup> F-2.5mm <sup>2</sup>

 THIRD ANGLE PROJECTION DESIGN UNITS mm SCALE 5:1 SIZE A4	GENERAL TOLERANCES (UNLESS SPECIFIED)		APPROVE BY LEO	DATE 30/JUN/21	PART NO. FTH002-0100F4X0	ITEM NO. FTH002	 Building Technology Cornerstone REV 0 SHEET NO. 1/1
	X.X ±0.30	X.* ±5'	CHECKED BY GISELLE	DATE 30/JUN/21	TITLE Heavy-duty connector 10A Crimp contacts!		
	X.XX ±0.15	X.XX' ±1'	DRAWN BY PYD	DATE 30/JUN/21	THIS DRAWING CONTAINS INFORMATION THAT IS PROPRIETARY TO TXGA INDUSTRIAL ELECTRONICS(S.Z)CO.,LTD AND SHOULD NOT BE USED WITHOUT WRITTEN PERMISSION		
	X.XXX ±0.10	X.XXX' ±0.5'					