

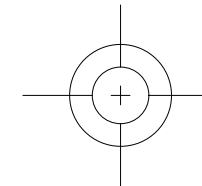
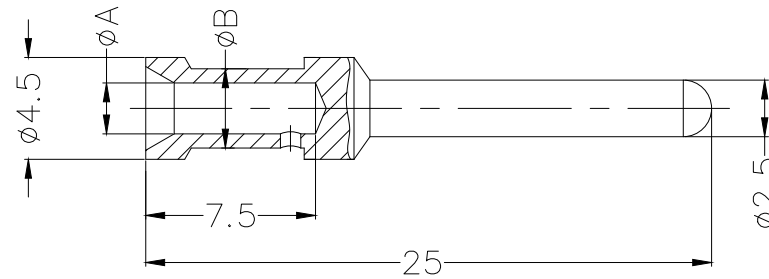
Part NO.	Wire Gauge		Dimensions		Identification No.
	mm <sup>2</sup>	AWG	A	B	
FTH005-0160M4A0	0.14-0.37	26-22	0.90	2.6	No.1
FTH005-0160M4B0	0.5	20	1.10	2.6	No.1
FTH005-0160M4C0	0.75	18	1.30	2.6	No.2
FTH005-0160M4D0	1.0	18	1.45	2.6	No.3
FTH005-0160M4E0	1.5	16	1.75	3.0	No.4
FTH005-0160M4F0	2.5	14	2.25	3.5	No.5
FTH005-0160M4Z0	3.0	12	2.55	3.7	No.1
FTH005-0160M4G0	4.0	12	2.85	3.9	No.1

REV	LOCATIONS	DESCRIPTION	DATE	REVISER	APPD

**SPECIFICATIONS**

Material

Body: Copper alloy, 1μm hard-silver plated  
 Temperature Range-Operating: -40°C~+125°C  
 Rated current: 16A  
 Contact resistance: ≤1mΩ  
 Mating cycles: ≥500 cycles



**Ordering Information**

FTH 005 - 0160 M 4 X 0  
 1 2 3 4 5 6

1 Category FTH-Terminal	2 Distinction No. 005	3 Current 0160-Current 16A
3 Gender M-Male	5 Plating 4-Silver plated	6 Wire range(mm <sup>2</sup> ) A-0.14~0.37mm <sup>2</sup> B-0.5mm <sup>2</sup> C-0.75mm <sup>2</sup> D-1.0mm <sup>2</sup> E-1.5mm <sup>2</sup> F-2.5mm <sup>2</sup> G-4.0mm <sup>2</sup> Z-3.0mm <sup>2</sup>

No.	No.1	No.2	No.3	No.4	No.5
1	no groove	1 groove	1 groove	2 groove	3 groove

 THIRD ANGLE PROJECTION DESIGN UNITS mm SCALE 5:1 SIZE A4	GENERAL TOLERANCES (UNLESS SPECIFIED)		APPROVE BY LEO	DATE 05/Jul/21	PART NO. FTH005-0160M4X0	ITEM NO. FTH005	 Building Technology Cornerstone REV 0 SHEET NO. 1/1
	X. ±0.30	X.* ±5'	CHECKED BY GISELLE	DATE 05/Jul/21	TITLE Heavy-duty connector 16A Crimp contacts		
	X.X ±0.20	X.X' ±2'	DRAWN BY PYD	DATE 05/Jul/21	THIS DRAWING CONTAINS INFORMATION THAT IS PROPRIETARY TO TXGA INDUSTRIAL ELECTRONICS(S.Z)CO.,LTD AND SHOULD NOT BE USED WITHOUT WRITTEN PERMISSION		
	X.XX ±0.15	X.XX' ±1'					