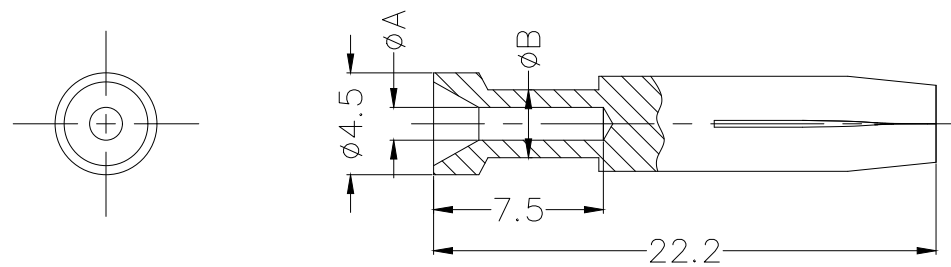


Part NO.	Wire Gauge		Dimensions		Identification No.
	mm ²	AWG	A	B	
FTH006-0160F4A0	0.14-0.37	26-22	0.90	2.6	No.1
FTH006-0160F4B0	0.5	20	1.10	2.6	No.1
FTH006-0160F4C0	0.75	18	1.30	2.6	No.2
FTH006-0160F4D0	1.0	18	1.45	2.6	No.3
FTH006-0160F4E0	1.5	16	1.75	3.0	No.4
FTH006-0160F4F0	2.5	14	2.25	3.5	No.5
FTH006-0160F4Z0	3.0	12	2.55	3.7	No.1
FTH006-0160F4G0	4.0	12	2.85	3.9	No.1

REV	LOCATIONS	DESCRIPTION	DATE	REVISER	APPD

SPECIFICATIONS
Material
 Body: Copper alloy, 1μm hard-silver plated
 Temperature Range-Operating: -40°C~+125°C
 Rated current: 16A
 Contact resistance: ≤1mΩ
 Mating cycles: ≥500 cycles



Ordering Information

FTH 006 - 0160 F 4 X 0
 1 2 3 4 5 6

1 Category FTH-Terminal 2 Distinction No. 006 3 Current 0160-Current 16A

3 Gender F-Female 5 Plating 4-Silver plated 6 Wire range(mm²)

A-0.14~0.37mm²
 B-0.5mm² C-0.75mm²
 D-1.0mm² E-1.5mm²
 F-2.5mm² G-4.0mm²
 Z-3.0mm²

No.	No.1	No.2	No.3	No.4	No.5
1					
	no groove	1 groove	1 groove	2 groove	3 groove

 THIRD ANGLE PROJECTION DESIGN UNITS mm SCALE 5:1 SIZE A4	GENERAL TOLERANCES (UNLESS SPECIFIED)		APPROVE BY LEO	DATE 05/Jul/21	PART NO. FTH006-0160F4X0	ITEM NO. FTH006	 Building Technology Cornerstone REV 0 SHEET NO. 1/1
	X. ±0.30	X.* ±5'	CHECKED BY GISELLE	DATE 05/Jul/21	TITLE Heavy-duty connector 16A Crimp contacts		
	X.X ±0.20	X.X* ±2'	DRAWN BY PYD	DATE 05/Jul/21	THIS DRAWING CONTAINS INFORMATION THAT IS PROPRIETARY TO TXGA INDUSTRIAL ELECTRONICS(S.Z)CO.,LTD AND SHOULD NOT BE USED WITHOUT WRITTEN PERMISSION		
	X.XX ±0.15	X.XX* ±1'					
X.XXX ±0.10	X.XXX* ±0.5'						